

Digifort Release Notes

Version 7.2.1.0

Index

Part I Description	5
Part II Version 7.2.1.0	7
1 New features and improvements.....	7
Better multi-processor scalability	7
Multi-thread media playback	7
Updated database	7
MP4 compatible with Whatsapp	7
Changing recording profile by event	7
Motion Detection using only I-Frames	8
Multi-threaded video decoding	8
ONVIF Profile G	9
Attach multiple images to e-mail	9
Size limit for images sent by email	10
New design of alarm screen	10
Playback of multiple events in the alarm window	11
Auto deactivate motion detection on PTZ	12
Timeline zoom with mouse	12
Stop PTZ Patrol	12
Customized Home position	13
Force encrypted exporting	14
Automatically change system language per user	15
Check and fix invalid map links	16
E-mail customization	17
Playback on RTSP server	18
Connection time limit for RTSP server	18
Test HTTP actions through client	19
Virtual Matrix monitor name on client interface	20
Monitor Name on Surveillance Client Title	21
Global Events and Manual events Filter in Surveillance Client	21
Saved views on Failover servers	22
Timer Views now saved only on corresponding servers	22
Improved Active Directory user search	22
Active Directory authentication cache	23
Camera RTP timestamp usage	23
Character mask and character limit in LPR	24
LPR reading precision increased when using external trigger	24
Edge Recording download tolerance	24
Improvements for Failback	25
Advanced Analytics calibration	25
Initialization improvements	25
Resizing of remote directory selection screen	25
Internet Explorer 11 for Google Maps on Administration Client	26
Improved performance of Virtual Matrix monitors list	26
API on HTTPS	26
TCP Nagle disabled for API connections	26
API Connections time out	26
Improved video playback via API	27

Surveillance Client script now runs on open instance	27
Optimized Index file cache	27
Recording file cache	27
Support for G.726 BE and LE.....	27
ONVIF driver now uses less resources	27
Camera selection with active Visual Joystick	27
Sending single camera to Virtual Matrix with local settings	27
Recording threads	27
Cancel auto-close of alarm window	27
New Neural Labs version	27
Saving presets with name in the camera	28
Faster loading of maps in Administration Client	28
New option for auto naming cameras	28
Better use of Operating System resources	28
2 New supported devices.....	28
Media Devices	28
I/O Devices	48
3 Changes in I/O Device licensing.....	48
4 Fixes.....	48
 Index	 0

Part



1 Description



This file contains the history of all changes made to the system. Changes here shown are valid for the Enterprise edition that has all the features. Professional, Standard and Explorer editions may not have certain items described in this file.

Part



2 Version 7.2.1.0

Release date: 05/28/2018

2.1 New features and improvements

2.1.1 Better multi-processor scalability

The system now has a new memory manager that allows greater scalability when using multiple processors. The performance gain can reach more than 50% depending on the configuration and load on the server. In tests performed it was possible to reduce CPU usage by up to 50% in servers with high processing volume and multiple cores.

2.1.2 Multi-thread media playback

The video playback and playback system (Server-Side) now uses multi-threads to ensure better performance when reading the images and sending them to the clients.

2.1.3 Updated database

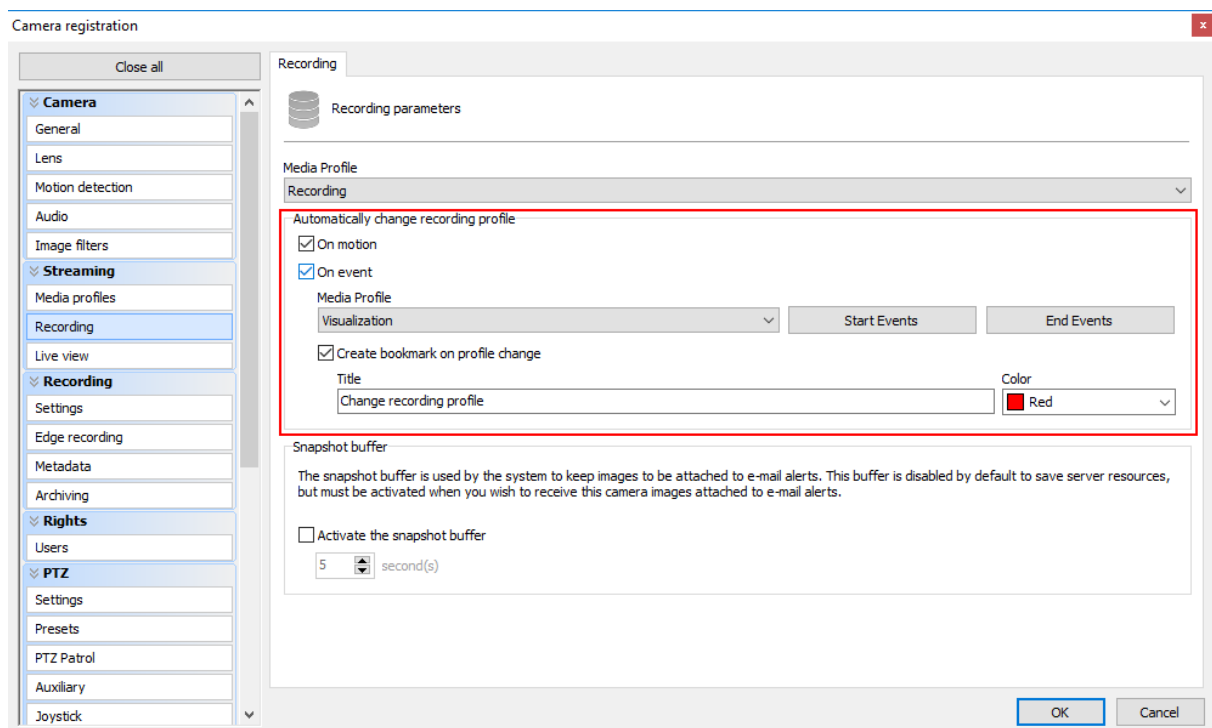
The System Database server has been upgraded, ensuring greater reliability and performance.

2.1.4 MP4 compatible with Whatsapp

The .MP4 export format is now WhatsApp compatible and can be sent directly through the WhatsApp web interface as well as through the app.

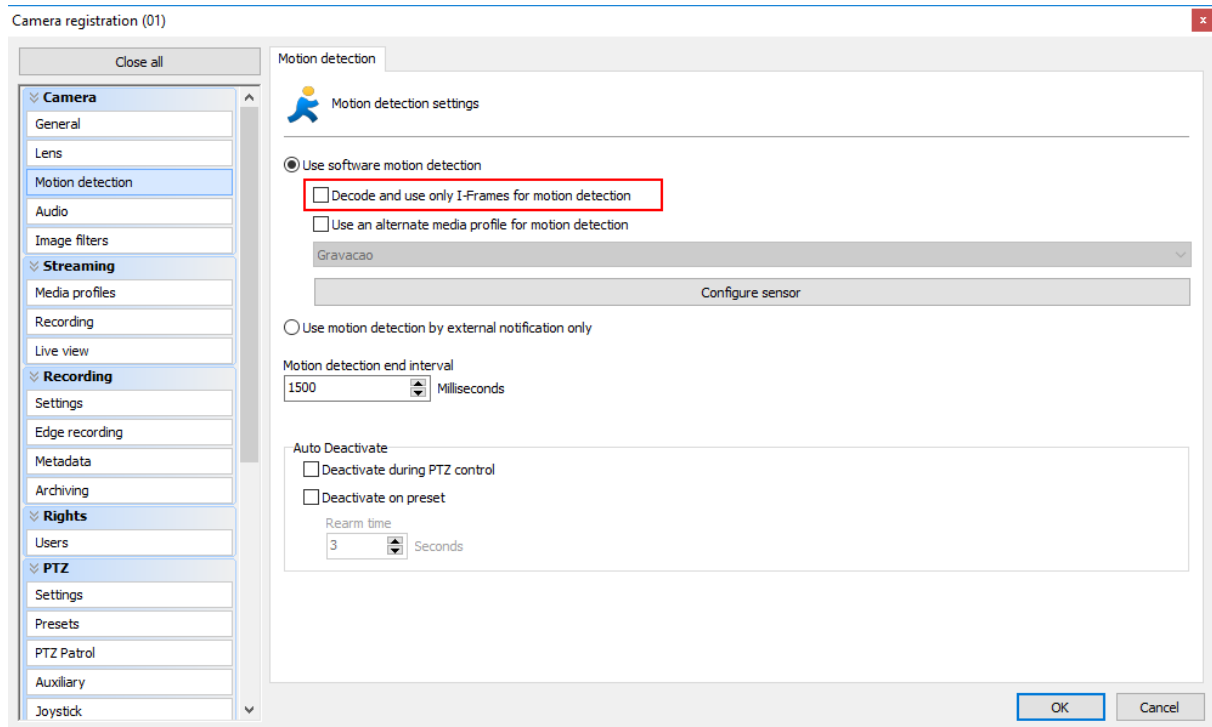
2.1.5 Changing recording profile by event

The system now allows the automatic switch of the recording profile by events. Previously it was only possible to use motion detection to change the recording profile.



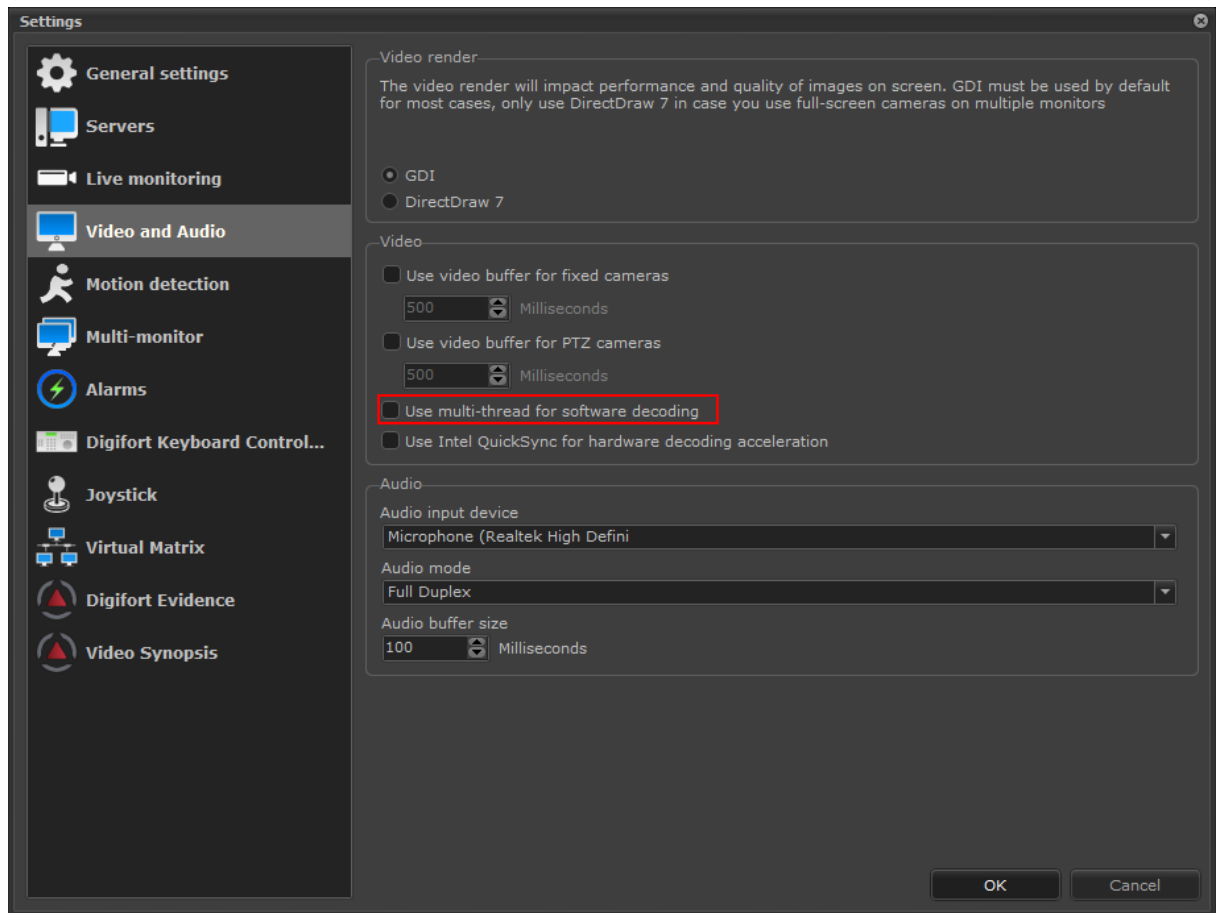
2.1.6 Motion Detection using only I-Frames

The system now allows the use of only I-Frames to detect motion. This option should offer a significant reduction in CPU usage by the server, but we recommend using 2 I-Frames per second for best motion detection performance.



2.1.7 Multi-threaded video decoding

The Surveillance Client now allows the use of multi-thread for H.264 and H.265 video decoding. This option can be used to accelerate video decoding on the client, especially ultra-megapixel images. Using this option will add 1 frame delay in the video, ie at 30 frames per second the additional delay will be 33ms while at 7 frames per second the additional delay will be 143ms.



2.1.8 ONVIF Profile G

Added compatibility with ONVIF Profile G that defines a standard protocol for Edge Recording. With this compatibility it is now possible to use the Edge Recording system with the cameras using the ONVIF driver.

2.1.9 Attach multiple images to e-mail

The system now has a new option that allows you to attach multiple images of an event when sending emails.

Event action (Send e-mail)

E-Mail

Configure e-mail sending

E-mail group: ▼

Message:

☒ Include camera image

Number of images (1 image per second prior to the event)

1

Available objects

- Camera
- Analytics configuration

Selected objects

SMS:

☒ Use default SMS message

☐ Use custom SMS message

☒ Include link for event playback

☐ Use this server record

☐ Auto Login

Server IP: Port: 8600

User: Password:

OK Cancel

2.1.10 Size limit for images sent by email

All images sent by email above 1920x1080 will now be resized to at most 1920 width or 1080 height, while retaining their original aspect ratio.

2.1.11 New design of alarm screen

The Surveillance Client alarm screen has been redesigned to provide better alarm viewing.

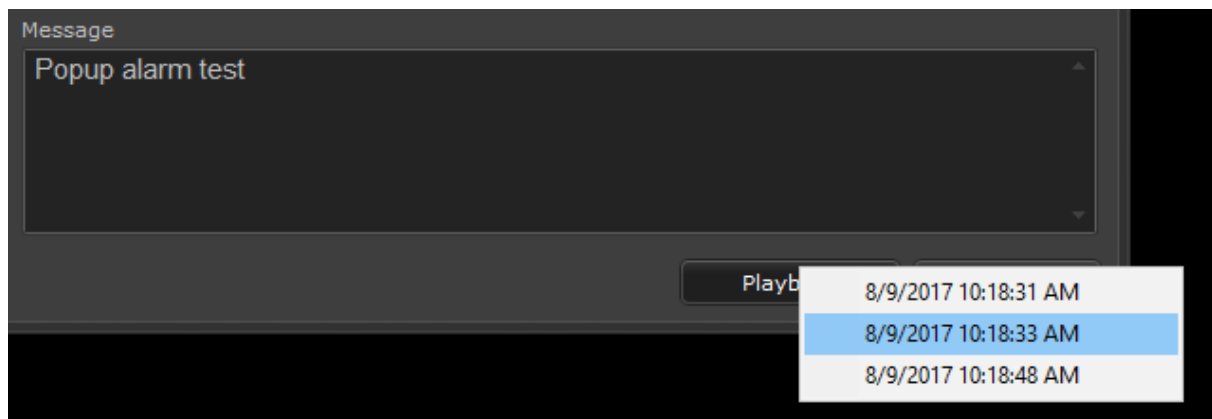
Changes:

- Red border of the screen
- New PLAY button on screen title
- Event type and source server is now displayed in the screen title
- Text containing date and time and information about the event will no longer be truncated when resizing the screen



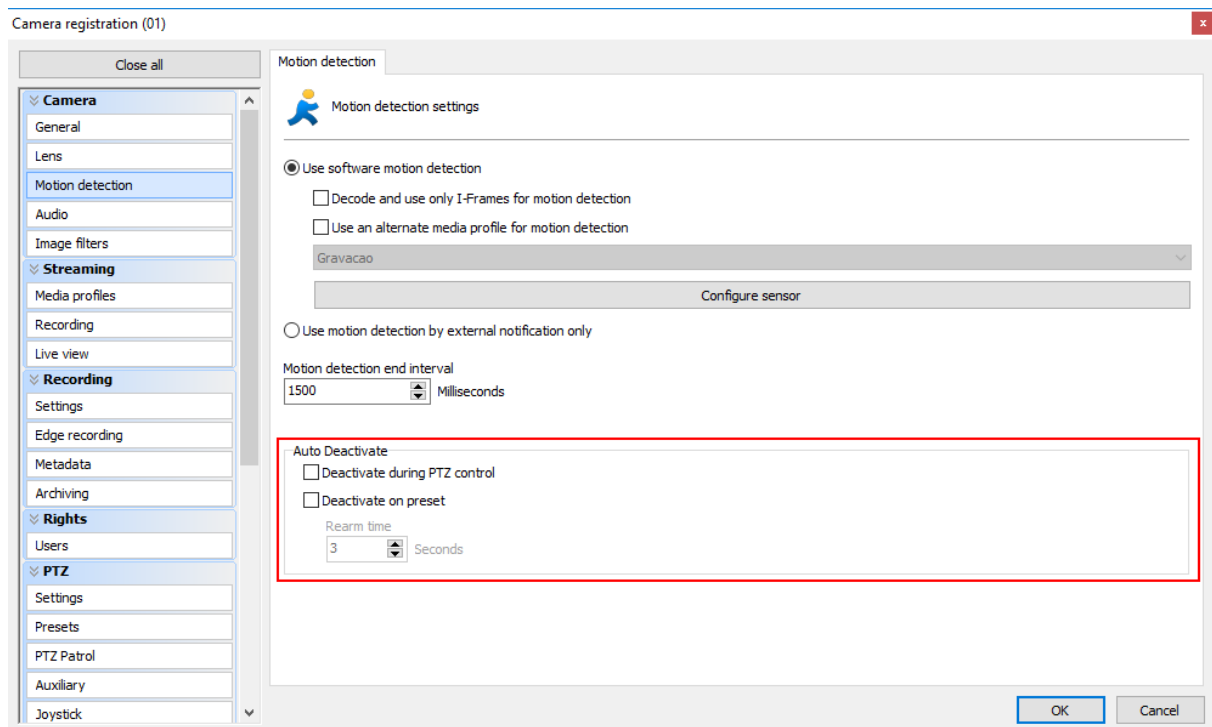
2.1.12 Playback of multiple events in the alarm window

The Surveillance Client alarm window will now store the time of all repeated alarms that occurred while the window was open, allowing the user to choose a specific time to perform fast video playback.



2.1.13 Auto deactivate motion detection on PTZ

The system now allows motion detection on the server to be temporarily disabled if the camera's PTZ is being used or when switching between presets.



2.1.14 Timeline zoom with mouse

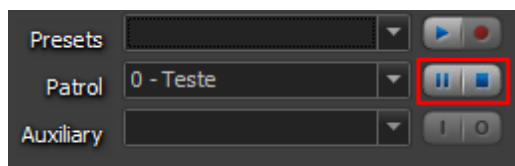
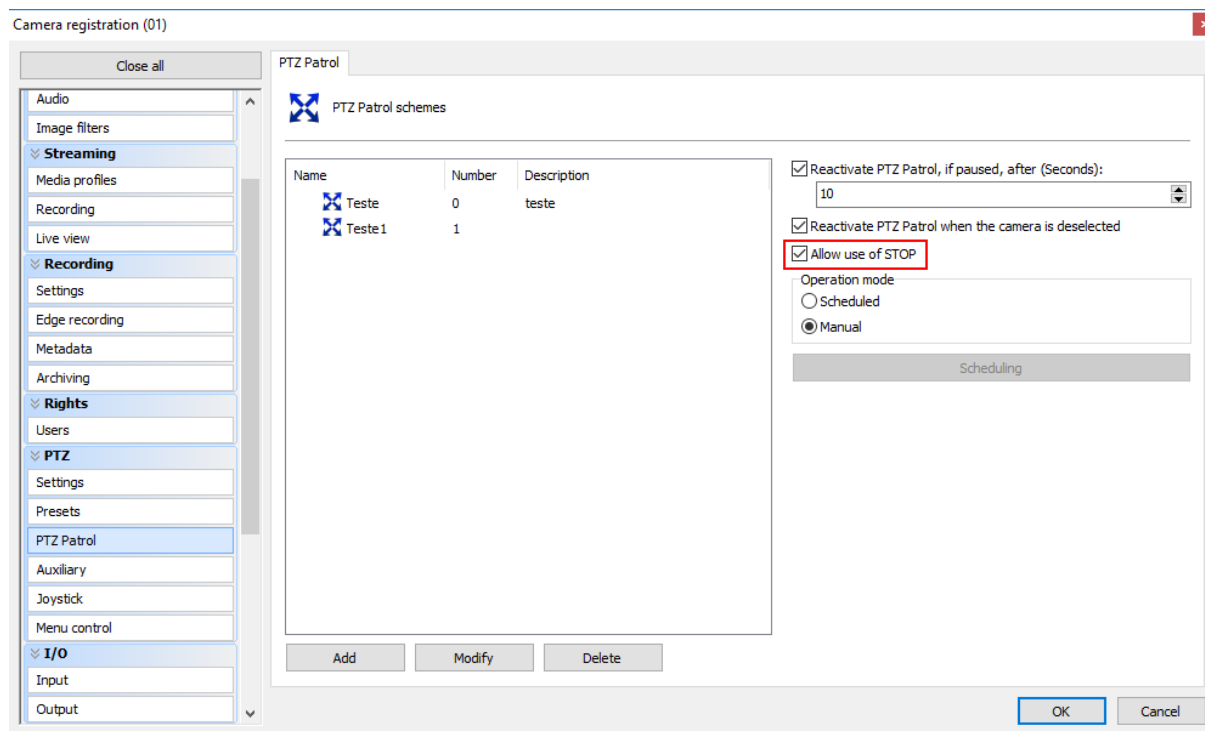
The video player now allows you to use the mouse wheel to zoom in or out on the timeline.

2.1.15 Stop PTZ Patrol

The system now has a new option that allows the Surveillance Client operator to permanently stop a PTZ Patrol. If patrol is stopped, the system will not automatically reactivate it because automatic reactivation will only work if patrol is paused.

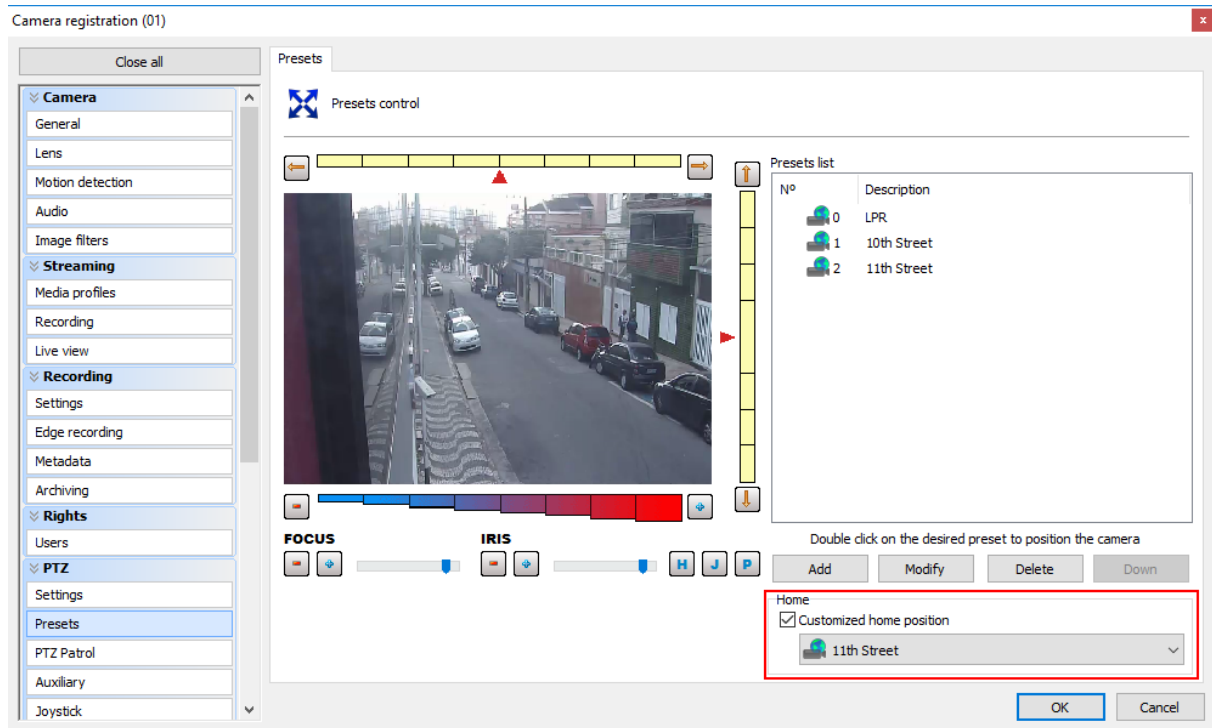
This option can be used as an emergency mode where the operator must stop the patrol operation of a camera and keep it fixed in a position for a long time.

By changing the automatic operation of the PTZ Patrol, the administrator has the option to enable or disable this option. The default value is deactivated.



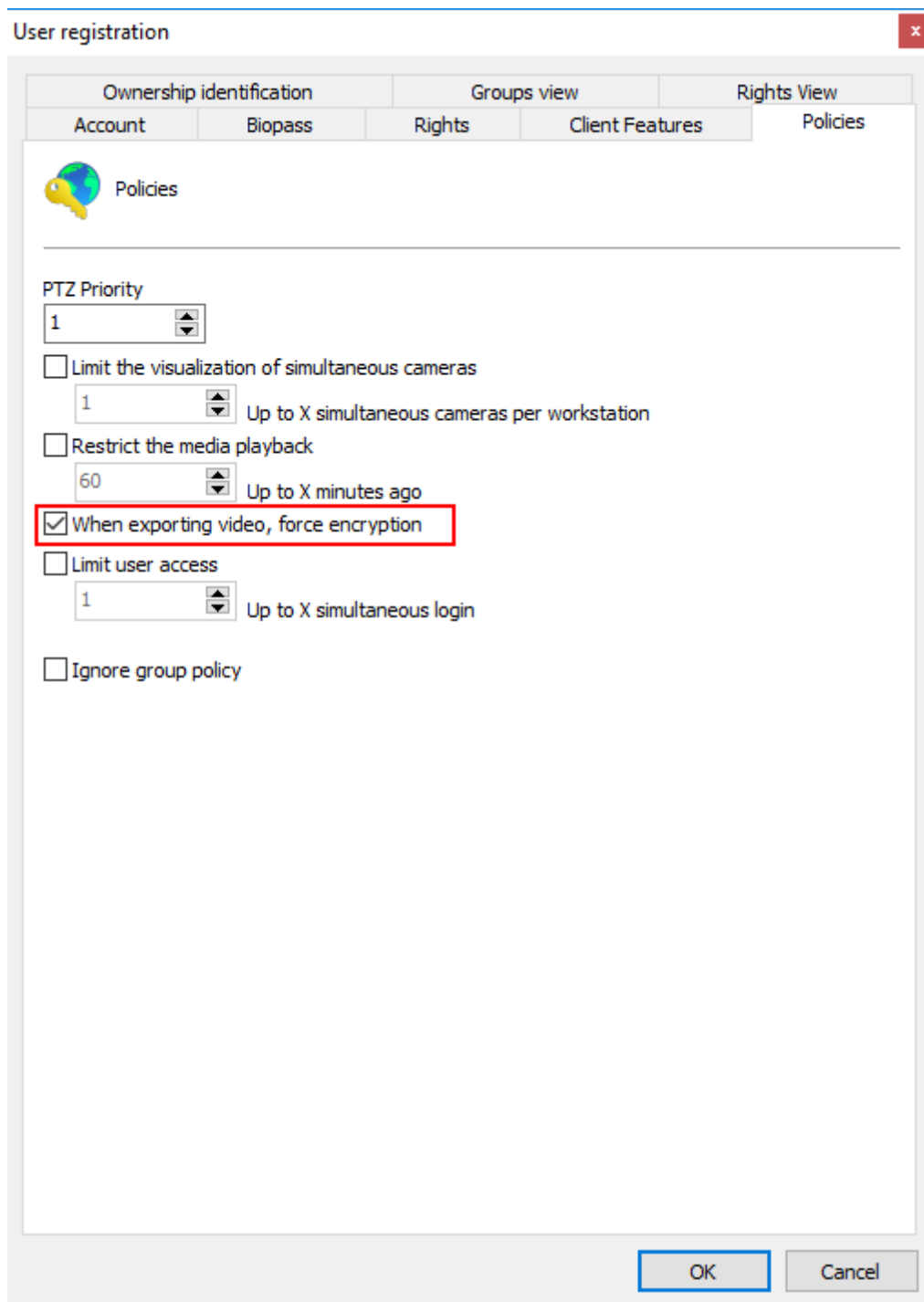
2.1.16 Customized Home position

The system now allows customization of the Home position of PTZ cameras. Many cameras do not have / support home position, so for cameras that do not support this option the administrator can now configure a camera preset as home.



2.1.17 Force encrypted exporting

The system now allows you to force the use of encryption on every video export. This option can be configured per user or user group.



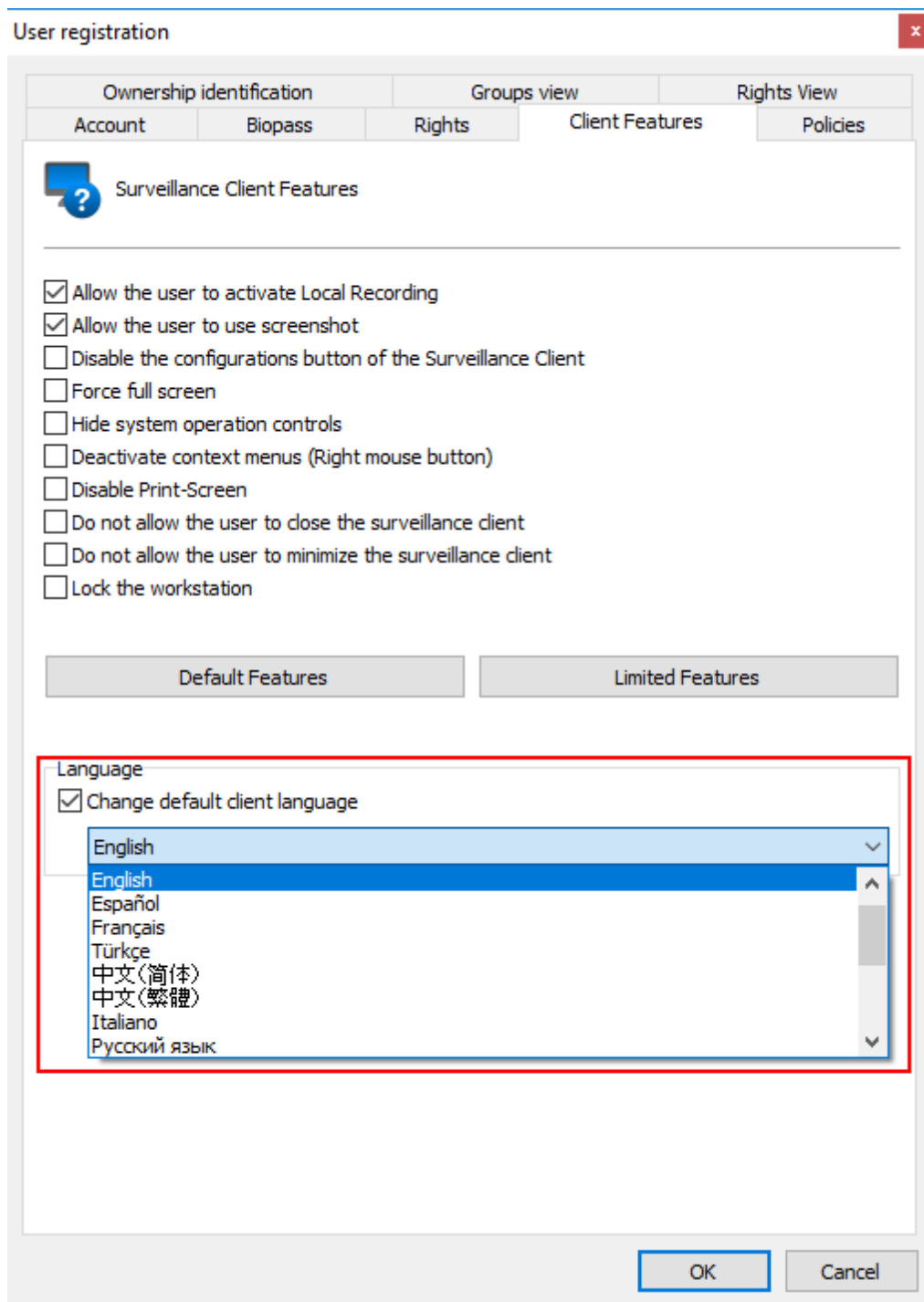
The screenshot shows the 'User registration' dialog box with the 'Policies' tab selected. The 'Policies' section contains several settings:

- PTZ Priority: 1
- ☐ Limit the visualization of simultaneous cameras: 1 Up to X simultaneous cameras per workstation
- ☐ Restrict the media playback: 60 Up to X minutes ago
- ☒ When exporting video, force encryption (highlighted with a red box)
- ☐ Limit user access: 1 Up to X simultaneous login
- ☐ Ignore group policy

At the bottom right, there are 'OK' and 'Cancel' buttons.

2.1.18 Automatically change system language per user

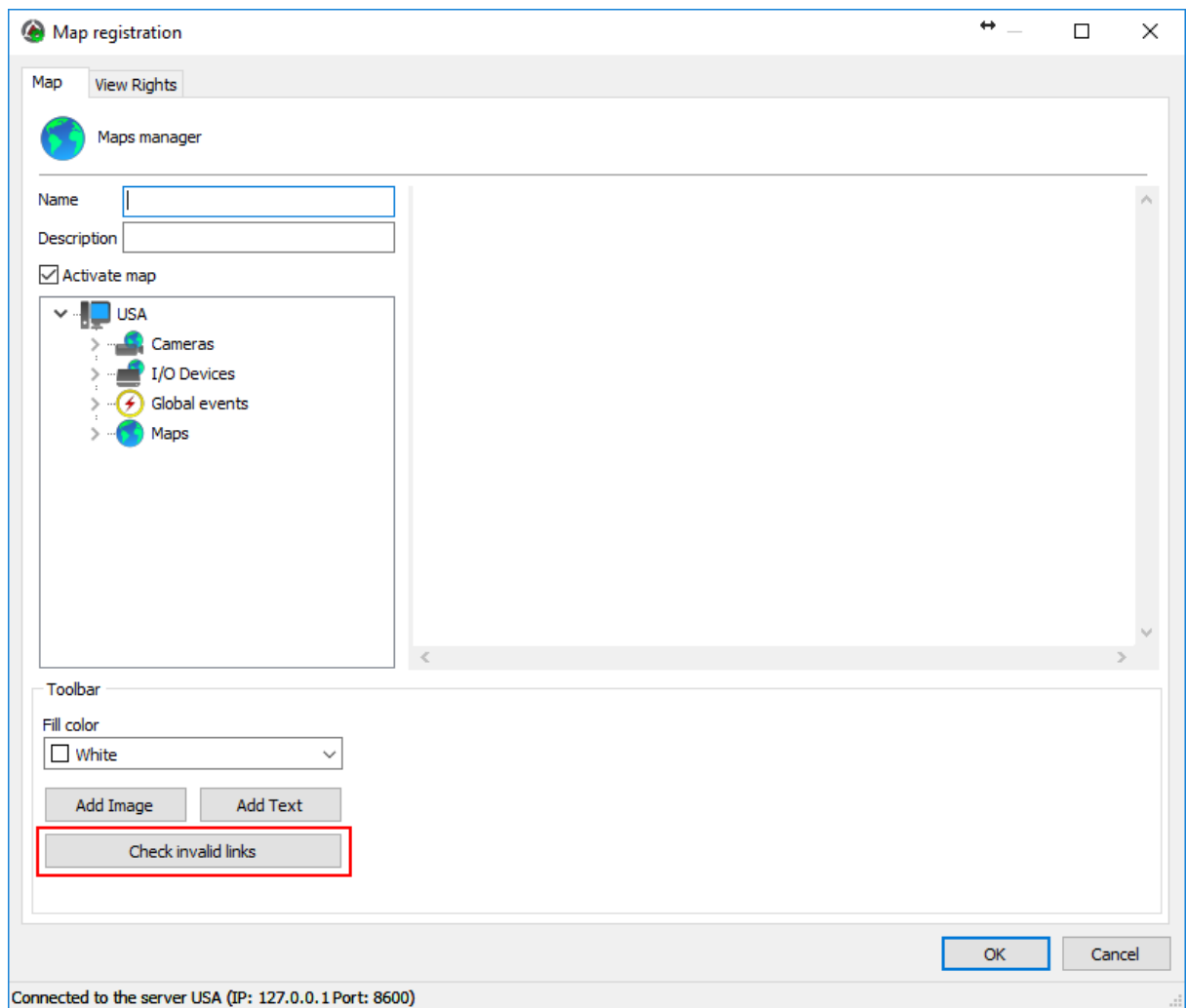
The clients language (Administration, Surveillance and Web) can now be changed dynamically for each user logged into the system, overwriting the computer's language option.



2.1.19 Check and fix invalid map links

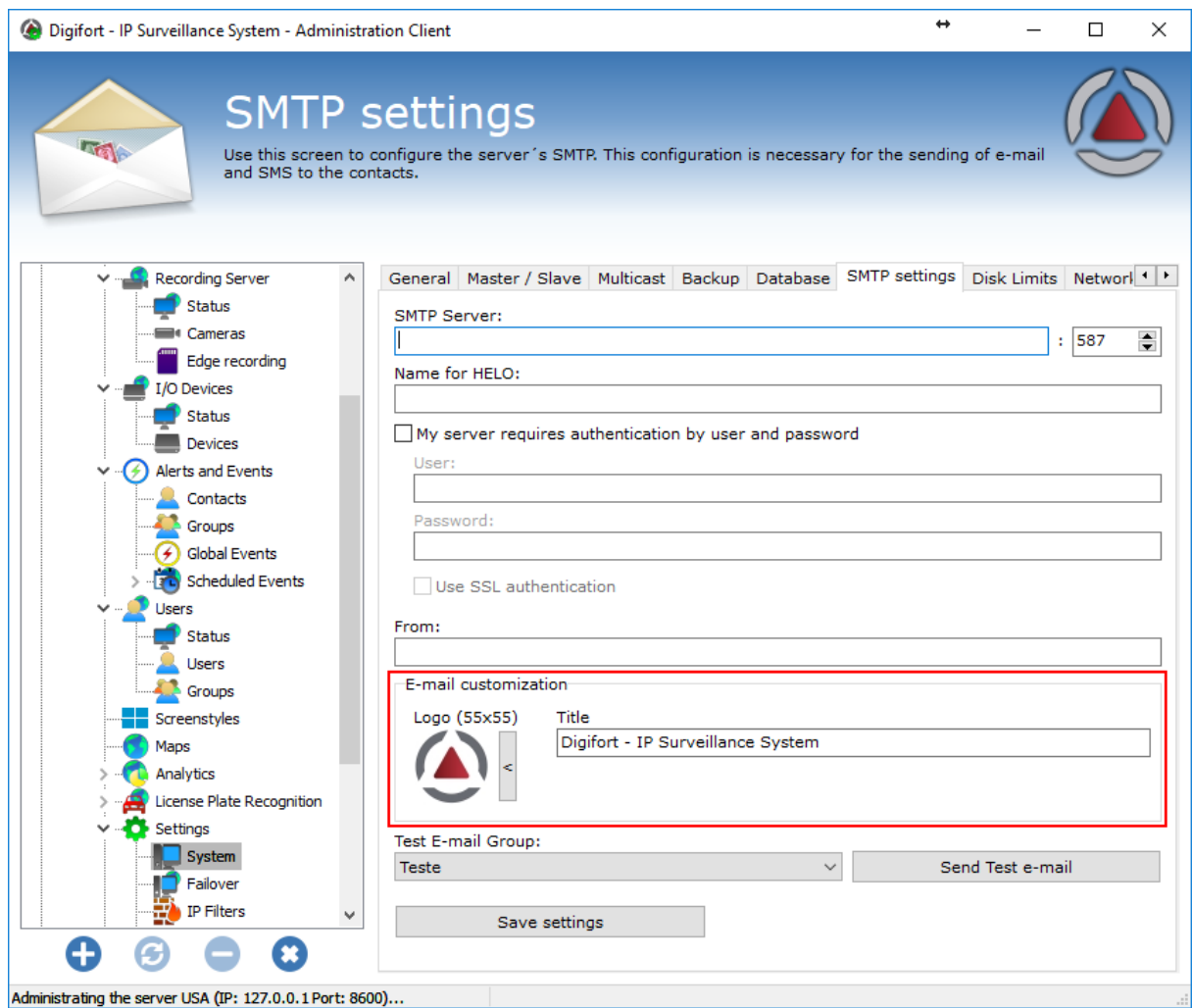
The map editing tool in the Administration Client now lets you check for invalid links on the map and tries to find an object with the same name on another server to fix the link.

The object links on maps can be broken if the server's serial changes, in this case, checking for links can correct all invalid links without having to reposition all objects.



2.1.20 E-mail customization

The system now allows you to customize the logo and company name when sending event emails.

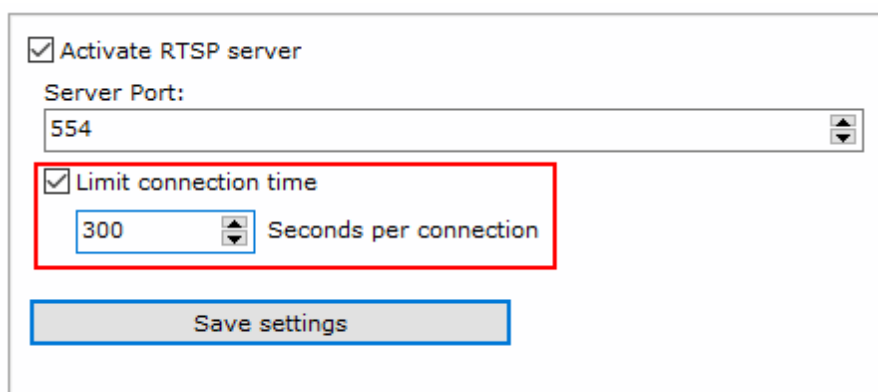


2.1.21 Playback on RTSP server

The RTSP server now allows playback

2.1.22 Connection time limit for RTSP server

The RTSP Server now has a connection timeout setting, setting a maximum amount of time that each connection can be open.



☒ Activate RTSP server

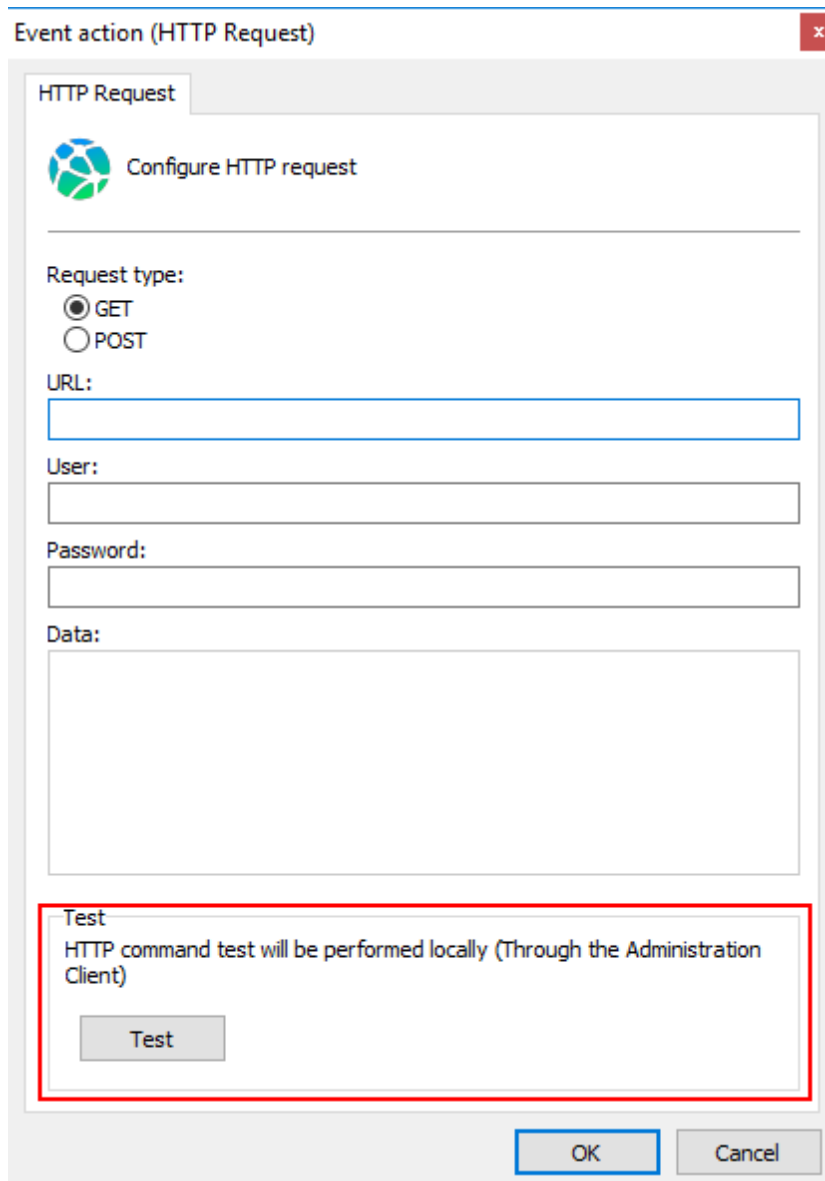
Server Port:
554

☒ Limit connection time
300 Seconds per connection

Save settings

2.1.23 Test HTTP actions through client

The Administration Client now allows you to test an HTTP Action directly from the configuration screen.



Event action (HTTP Request)

HTTP Request

Configure HTTP request

Request type:

☒ GET
☐ POST

URL:

User:

Password:

Data:

Test

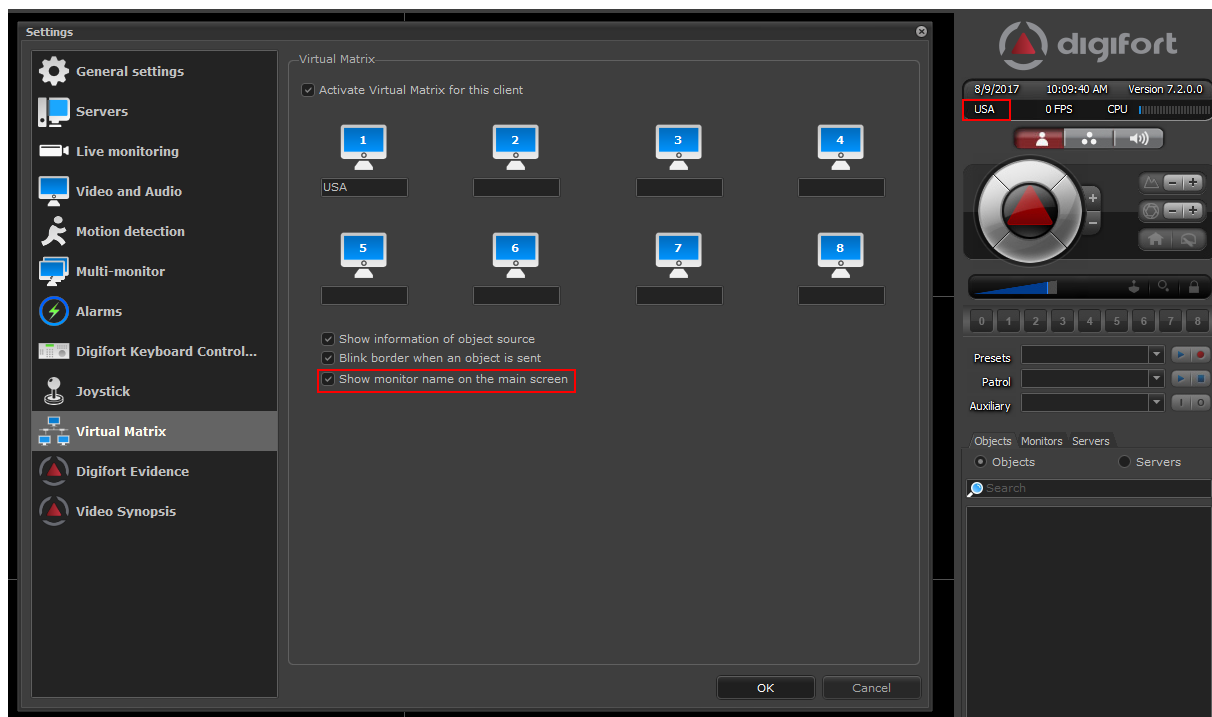
HTTP command test will be performed locally (Through the Administration Client)

Test

OK Cancel

2.1.24 Virtual Matrix monitor name on client interface

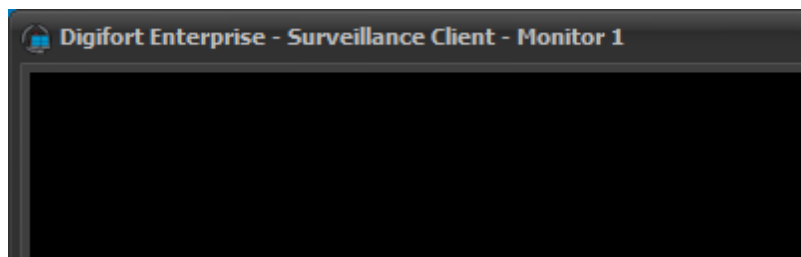
The Surveillance Client now allows you to display the name of the Virtual Matrix monitor in the main application screen.



2.1.25 Monitor Name on Surveillance Client Title

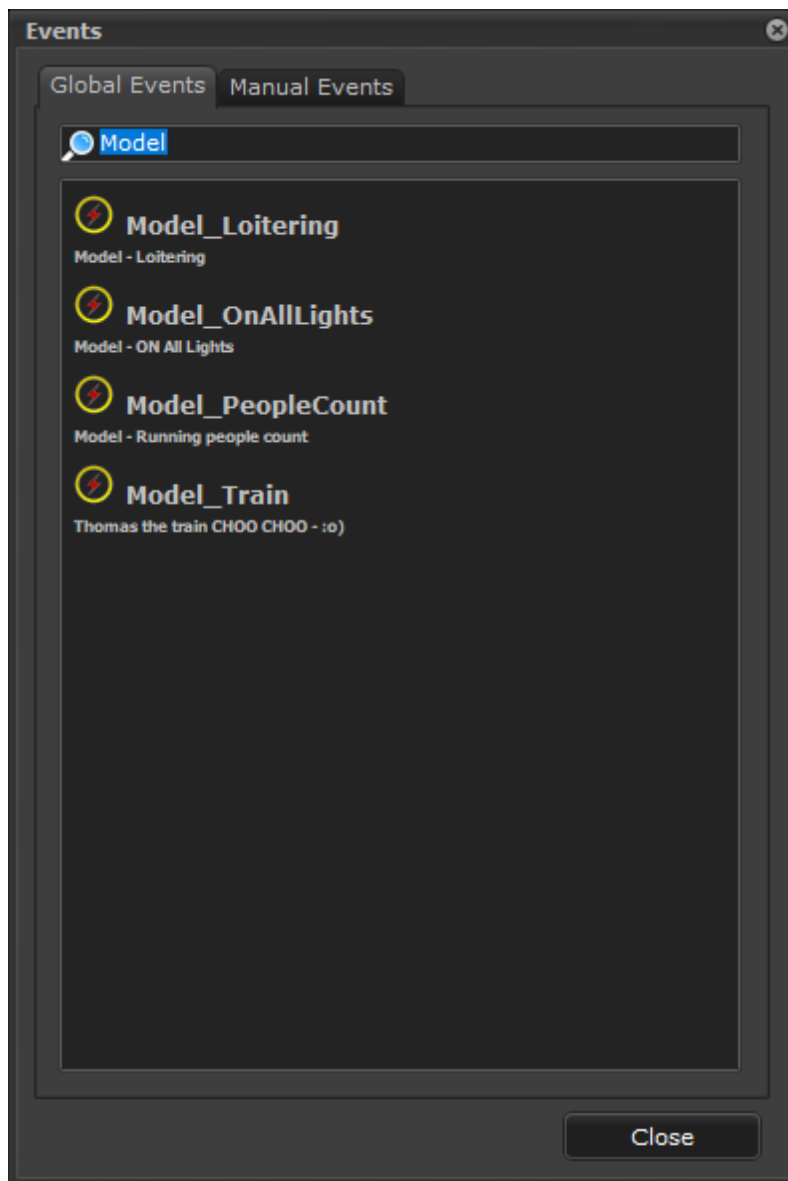
The Surveillance Client now allows you to display the monitor name in the application title for use with video wall integrations.

The name of the monitor may also be the name of the Virtual Matrix monitor if this option is used.



2.1.26 Global Events and Manual events Filter in Surveillance Client

The Global Events and Manual Events selection screen in the Surveillance Client now has a filter field to help find the desired event.



2.1.27 Saved views on Failover servers

All views saved through the Surveillance Client will now also be saved on all configured Failover servers that the client is connected to.

2.1.28 Timer Views now saved only on corresponding servers

The views saved by the Monitoring Client are written only to the servers where the view has objects. Timer Views will now also follow this rule.

2.1.29 Improved Active Directory user search

Active Directory user search has been improved to ensure better search performance. It is now possible to list thousands of users in a few seconds.

A new user filter field has been added to help filter Active Directory results for domains with many users. The filter follows the LDAP filter rules.

New Name and Description fields added in search result

Active Directory users

Active Directory

User search

Domain: systrade

Username for domain authentication: administrador

Password for domain authentication:

Filter: (&(sAMAccountName=*)(cn=*))

Search users

User	Name	Description
<input type="checkbox"/> Administrator	Administrador	
<input checked="" type="checkbox"/> User 01	User 01 full name	Digifort admin
<input type="checkbox"/> User 02	User 02 full name	
<input checked="" type="checkbox"/> User 03	User 03 full name	Digifort Operator
<input type="checkbox"/> User 04	User 04 full name	
<input type="checkbox"/> User 05	User 05 full name	Visitor
<input checked="" type="checkbox"/> User 06	User 06 full name	
<input type="checkbox"/> User 07	User 07 full name	
<input type="checkbox"/> User 08	User 08 full name	
<input checked="" type="checkbox"/> User 09	User 09 full name	
<input type="checkbox"/> User 10	User 10 full name	
<input checked="" type="checkbox"/> User 11	User 11 full name	
<input type="checkbox"/> User 12	User 12 full name	

All None Invert

OK Cancel

2.1.30 Active Directory authentication cache

A caching system for Active Directory-linked user authentication is designed to minimize the amount of system-wide authentication in AD. This cache will ensure greater performance and response time in system authentications.

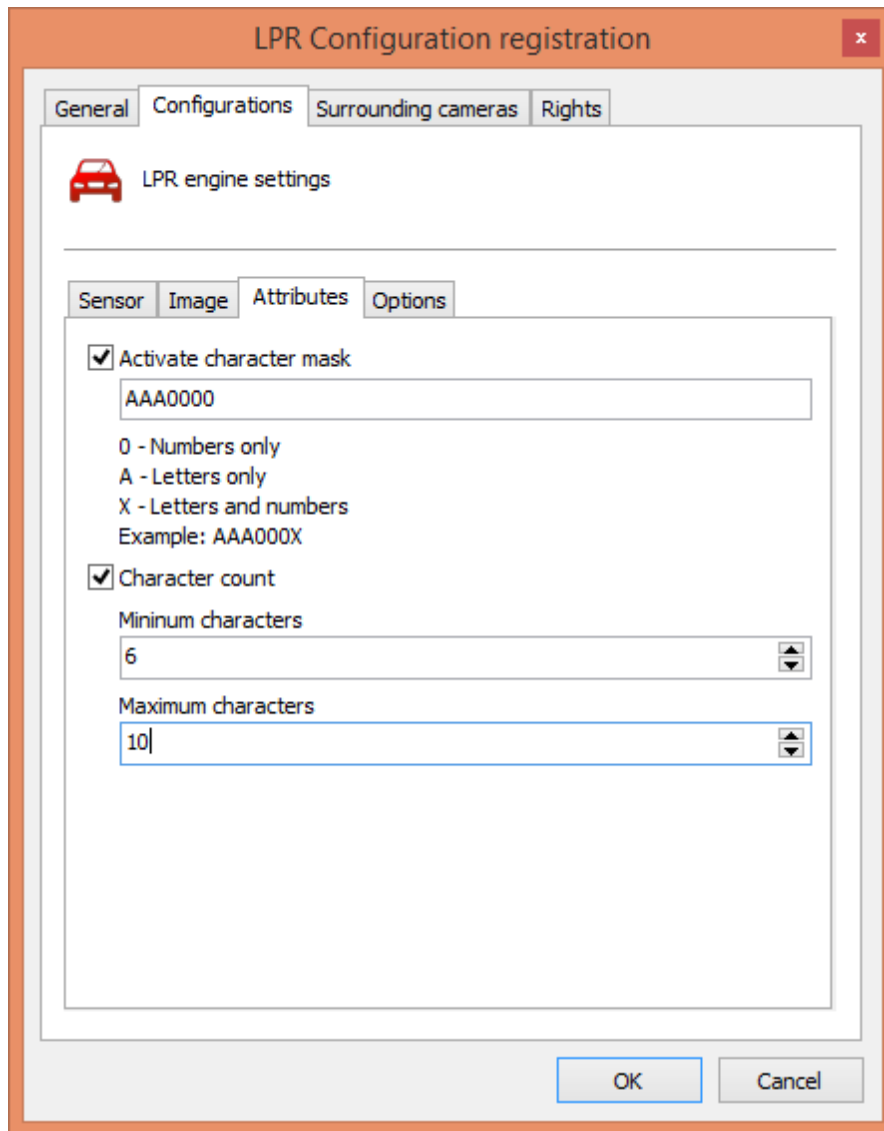
2.1.31 Camera RTP timestamp usage

The system now allows the use of the RTP timestamp of the cameras for better transmission in congested networks. This option is still in testing, if you want to use it, please contact our support for

activation instructions.

2.1.32 Character mask and character limit in LPR

The LPR configuration will now allow you to use the character mask and the character limit at the same time. Previously the mask size overlapped the character limit. Now if the character limit is greater than the mask size, the characters outside the mask will not be checked and the system will return the original recognized character.



The screenshot shows a software window titled "LPR Configuration registration" with a red close button in the top right corner. Inside the window, there are four tabs: "General", "Configurations", "Surrounding cameras", and "Rights". The "Configurations" tab is selected. Below the tabs, there is a red car icon and the text "LPR engine settings". Underneath, there are four sub-tabs: "Sensor", "Image", "Attributes", and "Options". The "Options" sub-tab is selected. In this sub-tab, there are two checked options: "Activate character mask" and "Character count". The "Activate character mask" option has a text input field containing "AAA0000". Below this, there is a list of options: "0 - Numbers only", "A - Letters only", and "X - Letters and numbers", followed by the text "Example: AAA000X". The "Character count" option has two spinners: "Minimum characters" set to "6" and "Maximum characters" set to "10". At the bottom of the window, there are "OK" and "Cancel" buttons.

2.1.33 LPR reading precision increased when using external trigger

The LPR result processing system using external trigger has been reworked to ensure greater accuracy of results

2.1.34 Edge Recording download tolerance

When downloading recordings via RTSP, the system checks if the timestamp of the last received frame is close to the timestamp required to mark the download as complete. This tolerance was 5 seconds,

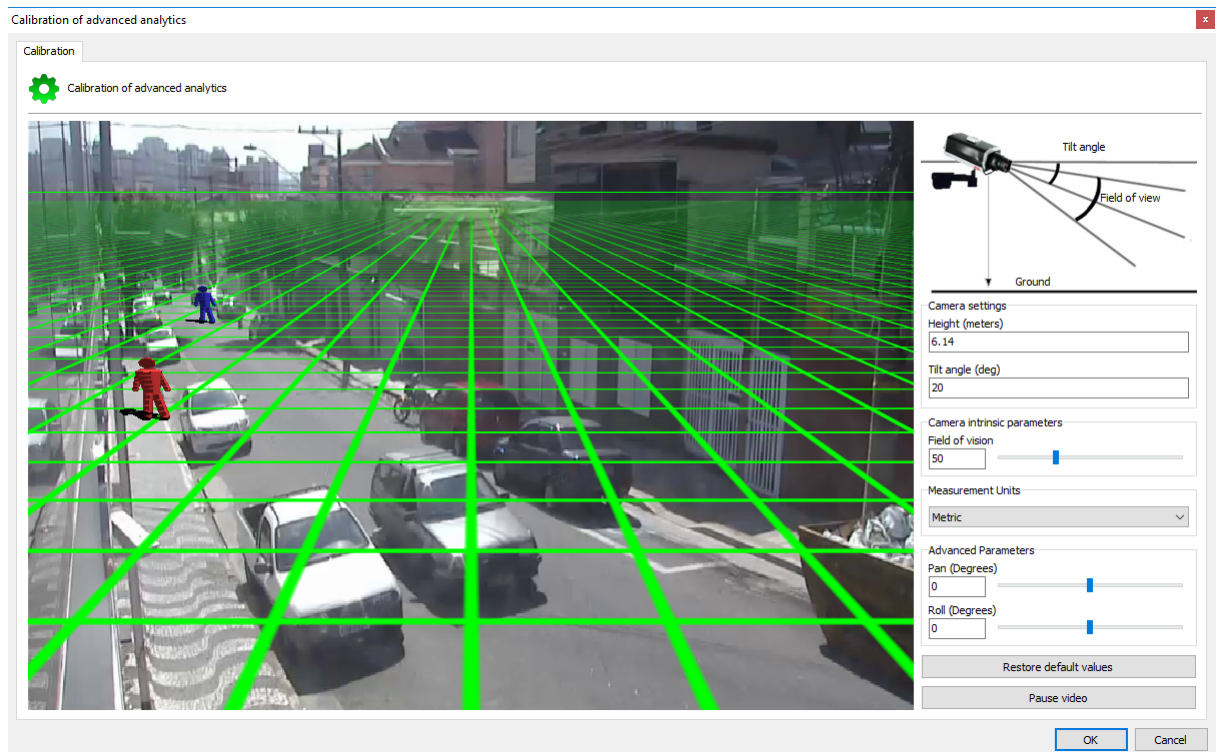
but some camera manufacturers did not return the full video when sending recordings, so this tolerance limit was increased to 60 seconds.

2.1.35 Improvements for Failback

The system will now not generate the Failback event after saving / changing the Failover Monitor object. The event will only be generated if the monitored server address is changed.

2.1.36 Advanced Analytics calibration

Advanced analytical calibration will now use the correct image proportions. Previously the calibration was not being regulated perfectly, which could generate differences in the calculation of the dimensions and speed of objects.

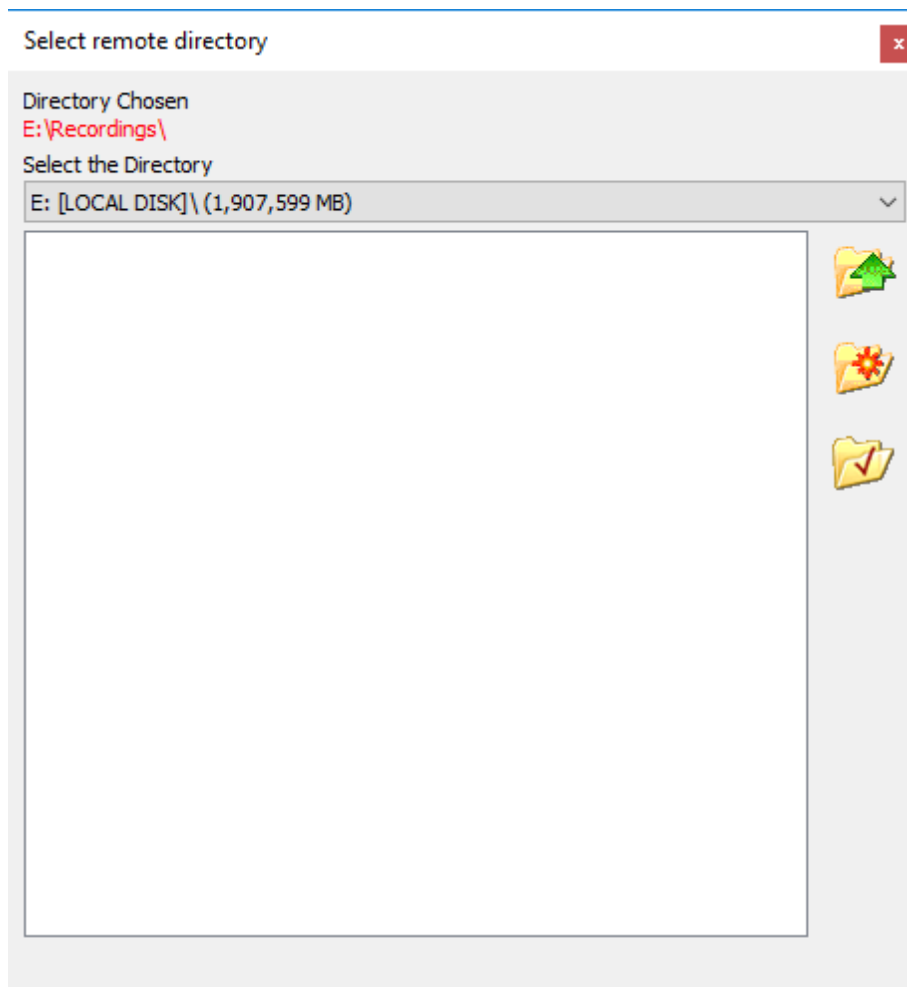


2.1.37 Initialization improvements

Improvements to server startup now ensure proper startup on systems with many cameras (3000+) registered on the server.

2.1.38 Resizing of remote directory selection screen

The remote directory selection screen in the Administration Client now allows resizing for better viewing of the folders.



2.1.39 Internet Explorer 11 for Google Maps on Administration Client

The Administration Client will now use integration with Internet Explorer 11 to open Google Maps on the Administration Client

2.1.40 Improved performance of Virtual Matrix monitors list

The performance of the Virtual Matrix monitor list in the Surveillance Client has been optimized to support large amounts of monitors

2.1.41 API on HTTPS

The API now supports HTTPS on port 8602

2.1.42 TCP Nagle disabled for API connections

The TCP connections opened with the HTTP API server will now have the Nagle algorithm disabled. This algorithm used by default on TCP connections, can introduce delays in sending small packets, which delays live video and video playback via API

2.1.43 API Connections timeout

Added timeout control for connections via HTTP API

2.1.44 Improved video playback via API

Video playback APIs (Also used by Mobile applications) have been enhanced to provide video streaming at the same rate as it was recorded. The time manager has been improved.

2.1.45 Surveillance Client script now runs on open instance

When running the Surveillance Client script file, the system will now use the client's already running instance and will no longer open a new instance.

This file is usually sent by the server at the occurrence of some event and allows quick playback of this event.

2.1.46 Optimized Index file cache

The reading cache of recording indexes is more optimized.

2.1.47 Recording file cache

For better reading performance of recording files, the file cache will be used only for index files.

2.1.48 Support for G.726 BE and LE

Support was added to the G.726 codec Big Endian and G.726 Little Endian.

Some cameras use Big Endian while others use Little Endian, the codec used previously was only Big Endian.

2.1.49 ONVIF driver now uses less resources

The driver for ONVIF devices has been restructured and now consumes fewer Operating System resources.

2.1.50 Camera selection with active Visual Joystick

The system now allows you to switch the camera selection on the Surveillance Client while the currently selected camera's Visual Joystick is active. Previously it was necessary to deactivate the Visual Joystick in order to select another object on screen.

2.1.51 Sending single camera to Virtual Matrix with local settings

Previously when sending a single camera through the virtual matrix, the local settings of this camera (such as current Media Profile) were not sent, so the camera would be opened using its default settings. Now when sending cameras to the virtual matrix, the system will use your local settings like Media Profile, Digital Zoom, Filters and others.

2.1.52 Recording threads

The default number of recording threads was increased to 8. Previously it was 5.

2.1.53 Cancel auto-close of alarm window

By clicking on the video playback button in the Surveillance Client Alarm Window the auto-close function will be disabled for that window to prevent the video player from being closed.

2.1.54 New Neural Labs version

Updated the Neural Labs LPR library. The new version has better recognition reliability and supports more countries as well as all US states

2.1.55 Saving presets with name in the camera

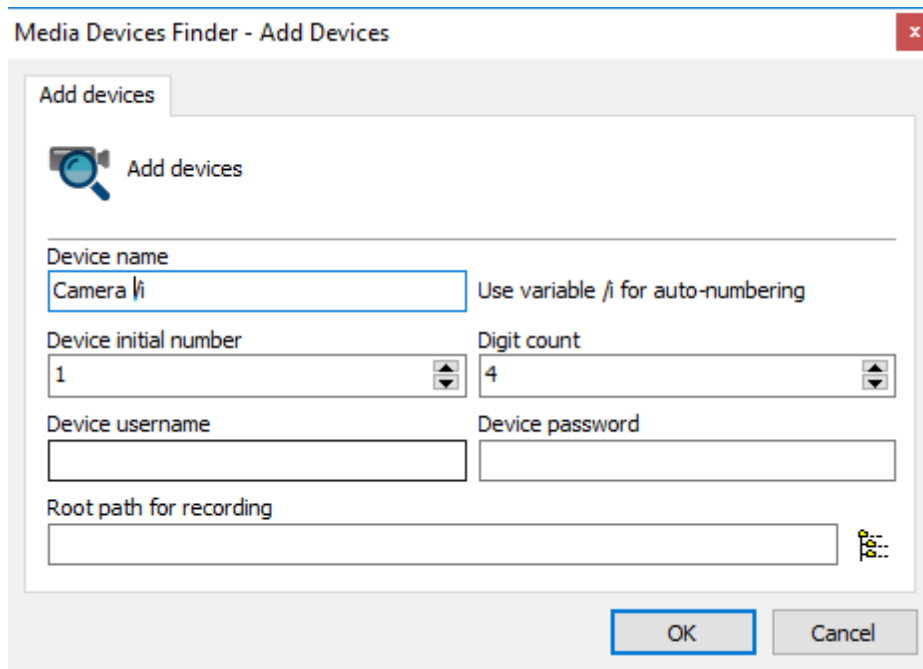
When saving presets in the camera, the system will now send the preset name to the device (Depends on the camera to support to this function).

2.1.56 Faster loading of maps in Administration Client

Opening maps for editing in the Administration Client that have many objects will now be instantaneous

2.1.57 New option for auto naming cameras

The camera search tool on the Administration Client's network now has a field for naming the cameras.



2.1.58 Better use of Operating System resources

Several improvements have been made to the system to use fewer Operating System resources, in particular the use of GDI Handles by the Surveillance Client.

2.2 New supported devices

2.2.1 Media Devices

- 2N Audio converter
- 2N Helios IP Vario
- 2N Helios IP Verso
- 2N IP Force
- 2N Speaker
- 2N Speaker Horn
- 3S Security N5016
- 3S Security N6060
- 3S Security NZ12
- 3TTech CVR 1672 TH
- 3TTech CVR 4720H

3TTech CVR 8720H
3TTech XVR 1608VN
Abus IPCA33500
Abus IPCA53000
Abus IPCA62520
Abus IPCA63500
Abus IPCA66500
Abus IPCA72520
Abus IPCA73500
Abus IPCA76500
Abus IPCB42500
Abus IPCB42501
Abus IPCB42550
Abus IPCB42551
Abus IPCB62500
Abus IPCB71500
Abus IPCB72500
Abus IPCB72501
Abus IPCS82500
Abus IPCS82520
Abus IPCS83500
ACTi B87
AGNI HLT-S8KD
AGNI HLZ-79KQ
Anguatech GRO-0012SE
Arecont AV12176DN
Arecont AV2326DNIR
Arecont AV2555DN
ARH Freeway
AVTech AVH0401
AVTech AVH312
AVTech AVM5447P
Axis M2025-LE
Axis M2026-LE Mk II
Axis M3044-V
Axis M3045-V
Axis M3048-P
Axis M3106-L Mk II
Axis M3106-LVE Mk II
Axis P1405-LE MkII
Axis P1447-LE
Axis P1448-LE
Axis P3225-LVE MkII
Axis P3228-LVE
Axis P3915-R Mk II
Axis Q3515-LVE
Bosch AutoDome IP 5000i IR
Bosch Dinion NBE-4502-AL
Bosch Dinion NBN-73023-BA
Bosch Dinion NHT-8001-F09VF
Bosch FlexiDome IP5000i IR
Bosch NEZ-5230-IRCW4
Bosch NFN-60122

Bosch NUC-52051-F0E
Bosch VIP X1XFE
Brickcom OB-200Ne
Brickcom OB-E400Af
Brickcom VD-E400Af
Bycon BIP BL362MP 25IR
Bycon BIP DL362MP 30IR
Bycon BSA-HVR1800
Bycon BSD-LIP22X2MP
C2P HTTP Camera
Canon VB-H652LVE
Citrox CX-1920
ConceptPro AIR2024-IP4M/12
ConceptPro AIR2024-IP4M/2.8
ConceptPro AIR2024-IP4M/6
ConceptPro AIR2024-IP4M/Z
ConceptPro AIR3526-IP4M
ConceptPro AIR3526-IP4M/Z
ConceptPro AIR4528-IP4M
ConceptPro AIR4528-IP4M/Z
ConceptPro AIR8012-IP3M-Z
ConceptPro CBP360-IP
ConceptPro CBP6324DN-IP
ConceptPro CBP6324DN-IP4M
ConceptPro CBP6324DNIR-IP
ConceptPro CBP6324DNIR-IP4M
ConceptPro CBP6324DNIR-IP4M-Z
ConceptPro CVP9314DNIR-IP4M
ConceptPro CVP9314DNIR-IP4M-Z
ConceptPro CVP9324DN-IP
ConceptPro CVP9324DN-IP4M
ConceptPro CVP9324DNIR-IP
ConceptPro CVP9324DNIR-IP4M
ConceptPro CVP9324DNIR-IP4M-Z
ConceptPro CVP9328DNIR-IP
ConceptPro CVP9328DNIR-IP4M
ConceptPro CVP9328DNIR-IP4M-G
ConceptPro CVP9328DNIR-IP-G
ConceptPro HAD-CBP6324DN-IP
ConceptPro IPC57/80HDR
ConceptPro VB-PH1080-IP
ConceptPro VCP2259-IP
ConceptPro VHSDIR-670EXT-IP
ConceptPro VHSDIR-680EXT-IP
ConceptPro VHSDIR-812EXT-IP3M
ConceptPro VIPC-MD4MPB
ConceptPro VIPC-MD4MPW
CS Eletronica DVR2116HWI
Dahua DH SD60225UN-HNI
Dahua DHI-HCVR4108C-S3
Dahua DHI-NVR2208-8P-S2
Dahua DHI-NVR4216-4KS2
Dahua DH-IPC-EBW81230

Dahua DH-IPC-EBW8630
Dahua DH-IPC-EBW8630-IVC
Dahua DH-IPC-HDB4231C-AS
Dahua DH-IPC-HDB4431C-AS
Dahua DH-IPC-HDBW2121R-VFS/ZS
Dahua DH-IPC-HDBW2221R-VFS/ZS
Dahua DH-IPC-HDBW2320R-ZS/VFS
Dahua DH-IPC-HDBW2421R-VFS/ZS
Dahua DH-IPC-HDBW4231E-AS
Dahua DH-IPC-HDBW4231F-AS
Dahua DH-IPC-HDBW4431F-AS
Dahua DH-IPC-HDBW81230E-Z
Dahua DH-IPC-HDBW8231E-Z
Dahua DH-IPC-HDBW8232E-Z
Dahua DH-IPC-HDBW8331E-Z
Dahua DH-IPC-HDBW8630E-Z
Dahua DH-IPC-HDW2121R-ZS
Dahua DH-IPC-HDW2221R-ZS
Dahua DH-IPC-HDW2320R-ZS
Dahua DH-IPC-HDW2421R-ZS
Dahua DH-IPC-HDW4231EM-AS
Dahua DH-IPC-HDW4231M
Dahua DH-IPC-HDW4431EM-AS
Dahua DH-IPC-HDW4431M
Dahua DH-IPC-HF81230E
Dahua DH-IPC-HF8231F
Dahua DH-IPC-HF8232F
Dahua DH-IPC-HF8331F
Dahua DH-IPC-HF8630F
Dahua DH-IPC-HFW2121R-VFS/ZS-IRE6
Dahua DH-IPC-HFW2221R-VFS/ZS-IRE6
Dahua DH-IPC-HFW2320RNVFS-IRE6
Dahua DH-IPC-HFW2320RPVFS-IRE6
Dahua DH-IPC-HFW2320R-Z(S)
Dahua DH-IPC-HFW2320R-ZS/VFS
Dahua DH-IPC-HFW2320R-ZS/VFS-IRE6
Dahua DH-IPC-HFW4231B-AS
Dahua DH-IPC-HFW4231D-AS
Dahua DH-IPC-HFW4431B-AS
Dahua DH-IPC-HFW4431D-AS
Dahua DH-IPC-HFW81230E-Z
Dahua DH-IPC-HFW8231E-Z
Dahua DH-IPC-HFW8232E-Z
Dahua DH-IPC-HFW8331E-Z
Dahua DH-IPC-HFW8630E
Dahua DHI-VTO6210B
Dahua DHI-XVR5104-HS
Dahua DHI-XVR5108-HS
Dahua DHI-XVR5116-HS
Dahua DH-NVR608-128-4KS2
Dahua DH-NVR608-64-4KS2
Dahua DH-NVR616D-128-4KS2
Dahua DH-SD49212T-HN

Dahua DH-SD49225T-HN
Dahua DH-SD49225TN-HN
Dahua DH-SD50225UN-HNI
Dahua DH-SD50430UN-HNI
Dahua DH-SD50430U-HNI
Dahua DH-SD59131UN-HN
Dahua DH-SD59230U-HNI
Dahua DH-SD59230UN-HNI
Dahua DH-SD59430UN-HNI
Dahua DH-SD65F230FN-HNI
Dahua DH-SD65F230FN-HNI
Dahua DH-SD6AE230FN-HNI
Dahua DH-SD6AE830V-HNI
Dahua DH-SD6AE830VN-HNI
Dahua DH-SD6AL830V-HNI
Dahua DH-SD6C230U-HNI
Dahua DH-SD6C230UN-HNI
Dahua DH-TPC-PT8620
Dahua EVR1104G2
Dahua EVR1108G2
Dahua EVR1116G2
Dahua IPC-EBW81230
Dahua IPC-EBW81230N
Dahua IPC-EBW81230P
Dahua IPC-EBW8630
Dahua IPC-EBW8630-IVC
Dahua IPC-EDW8120N
Dahua IPC-HDB4231G-AS
Dahua IPC-HDB4431G-AS
Dahua IPC-HDBW1120E
Dahua IPC-HDBW1220E
Dahua IPC-HDBW1420E
Dahua IPC-HDBW2221RZS/VFS
Dahua IPC-HDBW4830EN-AS
Dahua IPC-HDBW4830EP-AS
Dahua IPC-HDBW4831E-AS
Dahua IPC-HDBW5221E-Z
Dahua IPC-HDBW5231E-Z/Z5
Dahua IPC-HDBW5231E-ZE
Dahua IPC-HDBW5830EN-Z
Dahua IPC-HDBW5830EP-Z
Dahua IPC-HDBW5830E-Z/Z5
Dahua IPC-HDBW5830P-Z
Dahua IPC-HDBW5830RN-Z
Dahua IPC-HDBW5830RP-Z
Dahua IPC-HDBW5831E-Z/Z5
Dahua IPC-HDBW5831R-Z
Dahua IPC-HDPW1420F-AS
Dahua IPC-HDW1120S
Dahua IPC-HDW1220S
Dahua IPC-HDW1320S
Dahua IPC-HDW1420S
Dahua IPC-HDW2320RN-VFS

Dahua IPC-HDW2320RN-VFS
Dahua IPC-HDW4631EM-AS
Dahua IPC-HDW4831EM-AS
Dahua IPC-HDW5831R-Z
Dahua IPC-HF5231EZ
Dahua IPC-HF8232FN
Dahua IPC-HF8232FP
Dahua IPC-HFW1120S
Dahua IPC-HFW1220S
Dahua IPC-HFW1220SN
Dahua IPC-HFW1320RM
Dahua IPC-HFW1420S
Dahua IPC-HFW2221RN-VFS-IRE6
Dahua IPC-HFW2320R-ZS
Dahua IPC-HFW2421RNVFS-IRE6
Dahua IPC-HFW2421RNZS-IRE6
Dahua IPC-HFW2421RPVFS-IRE6
Dahua IPC-HFW2421RPZS-IRE6
Dahua IPC-HFW4631E-S
Dahua IPC-HFW4831E-S
Dahua IPC-HFW5231E-Z/Z5/Z12
Dahua IPC-HFW5231E-ZH-S2
Dahua IPC-HFW5431EN-Z
Dahua IPC-HFW5431EN-Z-S2
Dahua IPC-HFW5431EP-Z-S2
Dahua IPC-HFW5431E-Z/Z5
Dahua IPC-HFW5830EN-Z
Dahua IPC-HFW5830EP-Z
Dahua IPC-HFW5830E-Z/Z5
Dahua IPC-HFW5831E-Z/Z5
Dahua IPC-HFW81230E-Z
Dahua IPC-HFW8231E-Z
Dahua IPC-HFW8232E-Z
Dahua IPC-PFW8601N-A180
Dahua IPC-PFW8601N-H-A180
Dahua ITC302-RU1A-HL
Dahua ITC302-RU1A-IRHL
Dahua ITC302-RU1A-IRL
Dahua ITC302-RU1A-L
Dahua PSD81602N-A360
Dahua PSD81602P-A360
Dahua PTZ12230F-IRB-N
Dahua PTZ12240-LR8-N
Dahua PTZ12240N-LR8-N
Dahua SD50225U-HNI
Dahua SD6AE230F-HNI
Dahua SD6AE230FN-HNI
Dahua SD6AE240V-HNI
Dahua SD6AE240VN-HNI
Dahua SD6AE830V-HNI
Dahua SD6AE830VN-HNI
Dahua SD6C230U-HNI
Digifort Mobile Camera Pro

D-Link DCS-931L
D-Link DCS-933L
DSS DFH-6016E
DTC Encipher
Dynacolor MB-51R3
Dynacolor R2SI-6
Elgin DVR-04 M
Elgin DVR-04 MH
Elgin DVR-04 MH5
Elgin DVR-08 MH
Elgin DVR-08 MH5
Elgin DVR-16 MH
Elgin DVR-16 MH5
Flir DNB13TL2
Flir DNE12TL2
Flir FC-304
Flir FC-305
Flir FC-317
Flir FC-332
Flir FC-344
Flir FC-371
Flir FC-608
Flir FC-610
Flir FC-617
Flir FC-625
Flir FC-644
Foscam FI9828P
GEOip GV-04CH
GEOip GV-08CH
GEOip GV-16CH
GeoVision GV-BL110D
GeoVision GV-BX110D
GeoVision GV-EBL1100
GeoVision GV-EBL2100
GeoVision GV-EFD1100
GeoVision GV-EFD2100
GeoVision GV-MFD110
GeoVision GV-VD8700
Gerp IP NDVLM4MCM-2.8A12
Gerp IP NMBE2M-4.0A
Gerp IP NSDE2MIR-30X
Giga GS04HD LITE
Giga GS04HD OPEN
Giga GS04HD OPEN 1TB
Giga GS04HD OPEN 4M
Giga GS04HD OPEN Full
Giga GS04HD OPEN i2
Giga GS04HD OPEN i2 4M
Giga GS04HD OPEN i2 Full
Giga GS08HD LITE
Giga GS08HD OPEN
Giga GS08HD OPEN 1TB
Giga GS08HD OPEN 4M

Giga GS08HD OPEN Full
Giga GS08HD OPEN i2
Giga GS08HD OPEN i2 4M
Giga GS08HD OPEN i2 Full
Giga GS16480i
Giga GS16HD OPEN
Giga GS16HD OPEN 1TB
Giga GS16HD OPEN 2TB
Giga GS16HD OPEN 4M
Giga GS16HD OPEN Full
Giga GS16HD OPEN i2
Giga GS16HD OPEN i2 4M
Giga GS16HD OPEN i2 Full
Giga GS32HD
Giga GS32HD 2TB
Giga GS32HD 4TB
Giga IP1050 TV 2M
Giga IP1300 TB
Giga IP1300 TBP
Giga IP20 DB28
Giga IP20 TB28
Giga IP2000 DBP
Giga IP2000 TBP
Giga IP30DB 2M
Giga IP30DBP 2M
Giga IP30TBP 2M
Golbong VE 9904
Golbong VNT 8804
Greatek SBME-33610IX
Greatek SBME-33620IX
Greatek SBPE-23610I
Greatek SDME-23610I
Greatek SDME-23610IX
Greatek SDME-23620IX
HBTech HB-6316
HDL DVR-HM 4L
Hikvision DS-2CD1001-I
Hikvision DS-2CD2025FHWD-I
Hikvision DS-2CD2025FWD-I
Hikvision DS-2CD2035FWD-I
Hikvision DS-2CD2055FWD-I
Hikvision DS-2CD2085FWD-I
Hikvision DS-2CD2125FHWD-I(S)
Hikvision DS-2CD2125FWD-I(S)
Hikvision DS-2CD2125FWD-IM
Hikvision DS-2CD2135FWD-IS
Hikvision DS-2CD2142FWD-IS
Hikvision DS-2CD2155FWD-I(S)
Hikvision DS-2CD2185FWD-I
Hikvision DS-2CD2325FHWD-I
Hikvision DS-2CD2325FWD-I
Hikvision DS-2CD2335FWD-I
Hikvision DS-2CD2355FWD-I

Hikvision DS-2CD2385FWD-I
Hikvision DS-2CD2420F-I
Hikvision DS-2CD2420F-IW
Hikvision DS-2CD2442FWD-IW
Hikvision DS-2CD2625FWD-IZS
Hikvision DS-2CD2635FWD-IZS
Hikvision DS-2CD2655FWD-IZS
Hikvision DS-2CD2685FWD-IZS
Hikvision DS-2CD2710F-IZS
Hikvision DS-2CD2722FWD-IZS
Hikvision DS-2CD2725FWD-IZS
Hikvision DS-2CD2735FWD-IZS
Hikvision DS-2CD2755FWD-IZS
Hikvision DS-2CD2785FWD-IZS
Hikvision DS-2CD2H25FWD-IZS
Hikvision DS-2CD2H35FWD-IZS
Hikvision DS-2CD2H55FWD-IZS
Hikvision DS-2CD2H85FWD-IZS
Hikvision DS-2CD2T25FHWD-I5/I8
Hikvision DS-2CD2T25FWD-I
Hikvision DS-2CD2T35FWD-I5/I8
Hikvision DS-2CD2T42WD-I3/I5/I8
Hikvision DS-2CD2T55FWD-I5/I8
Hikvision DS-2CD2T85FWD-I5/I8
Hikvision DS-2CD4026FWD-P
Hikvision DS-2CD4626FWD-IZ
Hikvision DS-2CD4A26FWD-IZS
Hikvision DS-2CD4B16FWD-IZ
Hikvision DS-2CD4B16FWD-IZS
Hikvision DS-2CD4B26FWD-IZ
Hikvision DS-2CD4B26FWD-IZS
Hikvision DS-2CD4B36FWD-IZ
Hikvision DS-2CD4B36FWD-IZS
Hikvision DS-2CD4C16FWD-A
Hikvision DS-2CD4C16FWD-P
Hikvision DS-2CD4C26FWD-A
Hikvision DS-2CD4C26FWD-P
Hikvision DS-2CD4C36FWD-A
Hikvision DS-2CD4C36FWD-P
Hikvision DS-2CD4D16FWD-IZ
Hikvision DS-2CD4D16FWD-IZ/V
Hikvision DS-2CD4D16FWD-IZS
Hikvision DS-2CD4D16FWD-IZS/V
Hikvision DS-2CD4D26FWD-IZ
Hikvision DS-2CD4D26FWD-IZ/V
Hikvision DS-2CD4D26FWD-IZS
Hikvision DS-2CD4D26FWD-IZS/V
Hikvision DS-2CD4D36FWD-IZ
Hikvision DS-2CD4D36FWD-IZ/V
Hikvision DS-2CD4D36FWD-IZS
Hikvision DS-2CD4D36FWD-IZS/V
Hikvision DS-2DE4220W-DE
Hikvision DS-2DE4220W-AE

Hikvision DS-2DE5220W-AE
Hikvision DS-2DE5230W-AE3
Hikvision DS-2DE7230W-AE
Hikvision DS-2DF5286-AEL
Hikvision DS-2DF8225IX-AEL
Hikvision DS-2DF8225IX-AELW
Hikvision DS-2DF8236IV-AEL
Hikvision DS-2DF8236IX-AELW
Hikvision DS-2DF8250I5X-AEL
Hikvision DS-2DF8250I5X-AELW
Hikvision DS-2TD2166T-25
Hikvision DS-7204HGHI-F1
Hikvision DS-7204HQHI-F1
Hikvision DS-7208HGHI-F1
Hikvision DS-7208HQHI-F1
Hikvision DS-7208HWI-SL
Hikvision DS-7216HGHI-E1
Hikvision DS-7216HQHI-F2
Hikvision DS-7216HUHI-F2/N
Hikvision DS-7216HWI-SL
Hikvision DS-7308HUHI-F4
Hikvision DS-7332HGHI-SH
Hikvision DS-7604HI-ST
Hikvision DS-7604NI-E1
Hikvision DS-7608HI-ST
Hikvision DS-7616HI-ST
Hikvision DS-7616NI-E2/16P
Hikvision DS-7616NI-SP
Hikvision DS-7616NI-ST
Hikvision DS-7708NI-ST
Hikvision DS-7716NI-I4
Hikvision DS-7716NI-ST
Hikvision DS-7732NI-I4
Hikvision DS-7732NI-ST
Hikvision DS-7764NI-ST
Hikvision MB-51320
Hisilicon 3516D IMX326
Hisilicon NVR HI3536
Hisilicon NVR HI3798
Hisilicon XVR HI3531A
Honeywell CALIP-BAI120-50P
Honeywell HBD1PR1
Horus SF-SN326P-E1
Hunt HLT-S8KDH
Hunt HLZ-79ED
Hunt HLZ-79KQ
Illustra IPS02P6ANBTT
Intelbras HDCVI3116-G2
Intelbras MHDX 1004
Intelbras MHDX 1008
Intelbras MHDX 1016
Intelbras VD 16S 480 ST
Intelbras VD 3008

Intelbras VD 5008
Intelbras VIP 3230 B
Intelbras VIP 3230 D
Intelbras VIP 3230 VF
Intelbras VIP 5220 SD IR
Intelbras VIP 5450DZ
Intelbras VIP 5500 F
I-View DM-12MIPS04-F0411
I-View DM-12MIPS04-M0411
I-View DM-2MIPH04-F0311
I-View DM-2MIPH04-F04
I-View DM-2MIPH04-M0311
I-View DM-3MIPS04-F0311
I-View DM-3MIPS04-F04
I-View DM-3MIPS04-M0311
I-View DM-6MIPS04-F0411
I-View DM-6MIPS04-M0411
I-View FDMO-2MIP-20XIR
I-View FDMO-2MIP-30XIR
I-View HSO-2MIP-20XIR
I-View HSO-2MIP-30XIR
I-View HSO-2MIP-36XIR
I-View IR-12MIPS08-F0411
I-View IR-2MIPH08-F0311
I-View IR-2MIPH08-F04
I-View IR-2MIPH08-M0311
I-View IR-3MIPS08-F0311
I-View IR-3MIPS08-F04
I-View IR-3MIPS08-M0311
I-View IR-6MIPS08-F0411
I-View IR-6MIPS08-M0411
JFL Alarmes DHD-2008N
JFL Alarmes DHD-5016
JFL Alarmes WD3116
JFL Alarmes WD4104
JFL Alarmes WD4108
JFL Alarmes WD4132
JFL Alarmes WD4204
JFL Alarmes WD4208
JFL Alarmes WD4216
Jortan AHD-2208
Kan SE-72004
Kan SE-72008
Kan SE-72016
LuxVision DVR5716T-S
LuxVision ECD-9800A
LuxVision HY-DVR 720P-HY04N
LuxVision HY-DVR 720P-HY08N
LuxVision HY-DVR 720P-HY16N
LuxVision LV-DVR-5708-TS
LuxVision LV-DVR-9804
LuxVision LV-DVR-9804A
LuxVision LV-DVR-9808

LuxVision LV-DVR-9816
Maxima MXM-04
Maxima MXM-08
Maxima MXM-16
Merit Lilin PSD4624
Milesight MS-C2962-FIPB
MTW VM0414A
MyTec DVR-N041S
MyTec DVR-N081S
MyTec DVR-N161S
MyTec DVR-N328S
MyTec DVR-P041S-5MP
MyTec DVR-P081S-5MP
MyTec NVR-4K091S
MyTec NVR-4K161S
MyTec NVR-4K362S
Nazda NZ-1004D1A
Nazda NZ-2004H4A
Nazda NZ-2008D8A
Nazda NZ-2016D4A
Neocam NC8800-16
Neocam NC8800-4
Neocam NC8800-8
NEOip IV-VP885
OnElectronics EP-04A01
OnElectronics EP-08A01
OnElectronics EP-16A01
OnElectronics EP-16AHD01
OnElectronics MCF-13MP/20IR-IP
OnElectronics MDF-13MP/20IR-IP
Pelco DX4616
Pelco Esprit Enhanced ES6230-02
Pelco Esprit Enhanced ES6230-02US
Pelco Esprit Enhanced ES6230-05
Pelco Esprit Enhanced ES6230-05US
Pelco Esprit Enhanced ES6230-12
Pelco Esprit Enhanced ES6230-12P
Pelco Esprit Enhanced ES6230-12P-R2
Pelco Esprit Enhanced ES6230-12P-R2US
Pelco Esprit Enhanced ES6230-12PUS
Pelco Esprit Enhanced ES6230-12-R2
Pelco Esprit Enhanced ES6230-12-R2US
Pelco Esprit Enhanced ES6230-12US
Pelco Esprit Enhanced ES6230-15
Pelco Esprit Enhanced ES6230-15P
Pelco Esprit Enhanced ES6230-15P-R2
Pelco Esprit Enhanced ES6230-15P-R2US
Pelco Esprit Enhanced ES6230-15PUS
Pelco Esprit Enhanced ES6230-15-R2
Pelco Esprit Enhanced ES6230-15-R2US
Pelco Esprit Enhanced ES6230-15-US
Pelco Optera IMM12018-1EI
Pelco Optera IMM12018-1EP

Pelco Optera IMM12018-1ES
Pelco Optera IMM12018-1I
Pelco Optera IMM12018-1P
Pelco Optera IMM12018-1S
Pelco Optera IMM12018-B1I
Pelco Optera IMM12018-B1P
Pelco Optera IMM12018-B1S
Pelco Optera IMM12027
Pelco Optera IMM12027-1EI
Pelco Optera IMM12027-1EP
Pelco Optera IMM12027-1ES
Pelco Optera IMM12027-1I
Pelco Optera IMM12027-1P
Pelco Optera IMM12027-1S
Pelco Optera IMM12027-B1I
Pelco Optera IMM12027-B1P
Pelco Optera IMM12027-B1S
Pelco Optera IMM12036
Pelco Optera IMM12036-1EI
Pelco Optera IMM12036-1EP
Pelco Optera IMM12036-1ES
Pelco Optera IMM12036-1I
Pelco Optera IMM12036-1P
Pelco Optera IMM12036-1S
Pelco Optera IMM12036-B1I
Pelco Optera IMM12036-B1P
Pelco Optera IMM12036-B1S
Pelco Sarix IBE1291I
Pelco Sarix IBE1291R
Pelco Sarix IBE2221I
Pelco Sarix IBE2221R
Pelco Sarix IBE2291I
Pelco Sarix IBE2291R
Pelco Sarix IBE3221I
Pelco Sarix IBE3221R
Pelco Sarix IBE3291I
Pelco Sarix IBE3291R
Pelco Sarix IME122-1ES
Pelco Sarix IME129-1ES
Pelco Sarix IME129-1IS
Pelco Sarix IME129-1RS
Pelco Sarix IME2221ES
Pelco Sarix IME2221IS
Pelco Sarix IME2221RS
Pelco Sarix IME229-1ES
Pelco Sarix IME229-1IS
Pelco Sarix IME229-1RS
Pelco Sarix IME322-1ES
Pelco Sarix IME322-1IS
Pelco Sarix IME322-1RS
Pelco Sarix IME329-1ES
Pelco Sarix IME329-1IS
Pelco Sarix IME329-1RS

Pelco Sarix IXE12
Pelco Sarix IXE22
Pelco Sarix IXE32
Pelco Spectra Enhanced S6220-EG0
Pelco Spectra Enhanced S6220-EG1
Pelco Spectra Enhanced S6220-ESG0
Pelco Spectra Enhanced S6220-ESG1
Pelco Spectra Enhanced S6220-FW0
Pelco Spectra Enhanced S6220-FW1
Pelco Spectra Enhanced S6220-PB0
Pelco Spectra Enhanced S6220-PB1
Pelco Spectra Enhanced S6220-PG0
Pelco Spectra Enhanced S6220-PG1
Pelco Spectra Enhanced S6220-YB0
Pelco Spectra Enhanced S6220-YB1
Pelco Spectra Enhanced S6230-EG0
Pelco Spectra Enhanced S6230-EG1
Pelco Spectra Enhanced S6230-ESG0
Pelco Spectra Enhanced S6230-ESG1
Pelco Spectra Enhanced S6230-FW0
Pelco Spectra Enhanced S6230-FW1
Pelco Spectra Enhanced S6230-PB0
Pelco Spectra Enhanced S6230-PB1
Pelco Spectra Enhanced S6230-PG0
Pelco Spectra Enhanced S6230-PG1
Pelco Spectra Enhanced S6230-YB0
Pelco Spectra Enhanced S6230-YB1
Proimage PROI ST25V3
Protec 876
Protec JL-IP4030
Pumatronix ITSCAM-403_Vigia
Pumatronix ITSCAM-411
REI HD5-1200
Samsung LND-6010R
Samsung LNV-6020R
Samsung PNM-9081VQ
Samsung QNB-6000P
Samsung QNB-7000P
Samsung QNP-6230
Samsung XNB-6001P
Samsung XND-6011F
Samsung XND-6085VN
Samsung XND-6085VN/EX
Samsung XND-8020F
Samsung XND-8040R
Samsung XNF-8010RVN
Samsung XNO-6120
Samsung XNO-6120R
Samsung XNO-8020RN
Samsung XNP-6040HP
Samsung XNP-6120N
Samsung XNP-6320
Samsung XNP-6320H

Samsung XNP-6320HS
Samsung XNV-6011P
Samsung XNV-6085N/EX
Samsung XNV-6120
Samsung XNV-6120R
Samsung XNV-8040R
Samsung XRN-1610S
Saten ST-IPB-14718
Saten ST-IPB-2719
Saten ST-IPB-2729
Saten ST-IPB-4728
Saten ST-IPBH-13716
Saten ST-IPBH-2725
Saten ST-IPBH-2727
Saten ST-IPBH-2728
Saten ST-IPBH-4723
Saten ST-IPBH-5722
Saten ST-IPBX-2910
Saten ST-IPBX-2911
Saten ST-IPBX-4912
Saten ST-IPBX-5908
Saten ST-IPD-14614
Saten ST-IPD-14621
Saten ST-IPD-2615
Saten ST-IPD-2618
Saten ST-IPD-2622
Saten ST-IPD-2632
Saten ST-IPD-2633
Saten ST-IPD-2634
Saten ST-IPD-2635
Saten ST-IPD-4628
Saten ST-IPD-4630
Saten ST-IPSD-2811
Saten ST-IPSD-2813
Saten ST-IPSD-2816
Saten ST-IPSD-4814
Saten ST-IPSD-4817
Saten ST-IPSD-5815
Saten ST-IPSD-5818
Saten ST-IPSD-811
SECO DVR N-1640E
SECO DVR-16C CIF-480-H264
Segurimax MultiMax-04
Segurimax MultiMax-08
Segurimax MultiMax-16
Siquira 1xxx Series
Sony SNC-VB770
Sunchan EPC-802TD
TBK BOX7241
TBK BUL7411EIR
TBK BUL7412EIR
TBK BUL7421EIR
TBK BUL7422EIR

© 2002 - 2018 by Digifort. All rights reserved.

TBK NVR5208
TBK NVR5216
TBK NVR5232
TBK PTZ6620EIR
TBK PTZ6900EVA
TBK RES8500VA
TBK SER1001
TBK SER4001
TBK STB1000
TecVoz Q-T426
TecVoz Q-T5132
TecVoz T1-LTVI04
TecVoz T1-LTVI08
TecVoz T1-TVI16
TecVoz T1-TVI32
TecVoz TD2308SE
TecVoz TD26ME
TecVoz TV-E504
TecVoz TV-E508
TecVoz TV-E516
TecVoz TV-P5004
TecVoz TV-P5008
TecVoz TV-P5016
TecVoz TW-P3032
TecVoz TW-U1032
Teleste MPC-E1CC
Teleste MPX-E8
Topview A301SO-30
Topview DOM040C-ORM0310
Topview MDM030A
Topway Defender 04 1080T3
Topway Defender 04 720T3
Topway Defender 08 1080T3
Topway Defender 08 720T3
Topway Defender 16 1080T3
Topway Defender 16 720T3
TP-Link TL-NC230
TruVision TVC-M3245E-2M-N
TruVision TVD-M1210W-2-N
TruVision TVD-M1210W-2W-N
TruVision TVD-N210W-4-N
Uniview IPC-2121SR3-PF120
Uniview IPC-2121SR3-PF36
Uniview IPC-2121SR3-PF60
Uniview IPC-2122SR3-PF120
Uniview IPC-2122SR3-PF120-B
Uniview IPC-2122SR3-PF36
Uniview IPC-2122SR3-PF60
Uniview IPC-2122SR3-PF60-B
Uniview IPC-2122SR3-UPF36
Uniview IPC-2122SR3-UPF40
Uniview IPC-2122SR3-UPF60
Uniview IPC-2124SR3-DPF120

Uniview IPC-2124SR3-DPF36
Uniview IPC-2124SR3-DPF36-16G
Uniview IPC-2124SR3-DPF60
Uniview IPC-2124SR3-DPF60-16G
Uniview IPC-2222SR5-UPF40-B
Uniview IPC-2222SR5-UPF60-B
Uniview IPC-2224SR5-PF40-B
Uniview IPC-2224SR5-PF60-B
Uniview IPC-2224SR5-UPF40-B
Uniview IPC-2224SR5-UPF60-B
Uniview IPC-2321EBR-P
Uniview IPC-2321ER-P
Uniview IPC-2322ER-P
Uniview IPC-2324EBR-DP
Uniview IPC-2324EBR-DPZ28
Uniview IPC-232E-IR3-PF36-DT
Uniview IPC-241E-DLIR-IN
Uniview IPC-241ER5-DL
Uniview IPC-241L-IR-IN
Uniview IPC-242E-DLIR-IN
Uniview IPC-242ER5-DL
Uniview IPC-262EFW-DUZ
Uniview IPC-262ER9-DUZ
Uniview IPC-262ER9-X10DU
Uniview IPC-312SR-VPF36
Uniview IPC-314SR-DVPF28
Uniview IPC-314SR-DVPF36
Uniview IPC-321SR3-VSPF28
Uniview IPC-321SR3-VSPF40
Uniview IPC-321SR3-VSPF60
Uniview IPC-322ER3-DUVPF28-B
Uniview IPC-322ER3-DUVPF40-B
Uniview IPC-322ER3-DVPF36
Uniview IPC-322ER3-DVPF60
Uniview IPC-322SR3-DVSPF28-B
Uniview IPC-322SR3-DVSPF40-B
Uniview IPC-322SR3-UVPF28-B
Uniview IPC-322SR3-UVPF40-B
Uniview IPC-3231ER-DV
Uniview IPC-3231ER-VS
Uniview IPC-3232ER3-DUV
Uniview IPC-3232ER3-DUVZ
Uniview IPC-3232ER3-DVZ28
Uniview IPC-3234SR3-DVZ28
Uniview IPC-324ER3-DVPF28
Uniview IPC-324ER3-DVPF36
Uniview IPC-324ER3-DVPF60
Uniview IPC-341E-DLVIR-IN
Uniview IPC-341LR-V
Uniview IPC-342E-DLVIR-IN
Uniview IPC-342LR-V
Uniview IPC-3612ER3-PF40-B
Uniview IPC-3612ER3-PF60-B

Uniview IPC-3614SR3-DPF28
Uniview IPC-3614SR3-DPF28M
Uniview IPC-3614SR3-DPF36
Uniview IPC-3614SR3-DPF36M
Uniview IPC-3614SR3-DPF60
Uniview IPC-3614SR3-DPF60M
Uniview IPC-541E-DLC
Uniview IPC-541E-DL-IN
Uniview IPC-542E-DLC
Uniview IPC-542E-DL-IN
Uniview IPC-542E-DU
Uniview IPC-542E-DUC
Uniview IPC-542E-DUG
Uniview IPC-562E-DUG
Uniview IPC-6221EI-X22-UP-C
Uniview IPC-6221ER-X20
Uniview IPC-6221ER-X20P
Uniview IPC-6221ER-X30
Uniview IPC-6221ER-X30P
Uniview IPC-6221LR-X20S
Uniview IPC-6222EI-X22UP-C
Uniview IPC-6222ER-X20
Uniview IPC-6222ER-X20-B
Uniview IPC-6222ER-X20P
Uniview IPC-6222ER-X20P-B
Uniview IPC-6222ER-X30
Uniview IPC-6222ER-X30-B
Uniview IPC-6241SR-X20
Uniview IPC-6241SR-X22
Uniview IPC-6241SR-X30
Uniview IPC-6242SL-X22
Uniview IPC-6242SL-X22G
Uniview IPC-6242SL-X33
Uniview IPC-6242SL-X33G
Uniview IPC-6242SR-X20
Uniview IPC-6242SR-X22
Uniview IPC-6242SR-X30
Uniview IPC-6242SR-X33
Uniview IPC-6252SFW-X22U
Uniview IPC-6252SL-X33UP
Uniview IPC-6252SR-X22U
Uniview IPC-6252SR-X22UG
Uniview IPC-6252SR-X33U
Uniview IPC-6253SR-X33
Uniview IPC-641E-X22I-IN
Uniview IPC-641E-X22-IN
Uniview IPC-641E-X22IR-IN
Uniview IPC-642E-X22I-IN
Uniview IPC-642E-X22-IN
Uniview IPC-642E-X22IR-IN
Uniview IPC-6852SR-X44U
Uniview IPC-6858SR-X22
Uniview IPC-744SR5-PF40-32G

Uniview IPC-744SR5-PF60-32G
Uniview IPC-868ER-VF18-B
Uniview NVR301-04ES
Uniview NVR301-08ES
Uniview NVR302-16E-B
Uniview NVR302-9E-B
Venetian IP-21230
Venetian IP-64260
Venetian SEP-2120
Venetian SEP-2133
Venetian VE-2204-HD
Venetian VE-2208-HD
Venetian VE-2216-HD
Venetian VNT-2216
Verint CP-2101-361N
Vid8 VSDI-C20IP/20WBT
VideoMarte SL-100IPC02D
VideoMarte SL-130IPC36
VideoMarte SL-130IPC36XM
VideoMarte SL-130IPC85
VideoMarte SL-P360HI
Vitek VTC-IR303/FNP
Vitek VTC-TNB36R3V2
Vitek VTC-TNB42R3F2
Vitek VTC-TNB42R4F2
Vitek VTC-TNB48R4M2
Vitek VTC-TNB48R5V2
Vitek VTC-TNT2HR3F2
Vitek VTC-TNT2HR4F2
Vitek VTC-TNT2HR4M2
Vitek VTD-M30F3NP
Vitek VTD-MV30V212NP
Vitek VTD-MV30VR212NP
Vitek VTD-TND24R3F2
Vitek VTD-TND24R4F2
Vitek VTD-TND30R3V2
Vitek VTD-TND30R4M2
Vitek VTD-TND30R5V2
Vitek VTD-V30V212NP
Vitek VTT-PTZ10HR-4N
Vitek VTT-PTZ18HR-4N
Vivotek CC8160
Vivotek CD8371-HNTV
Vivotek FD8177-H
Vivotek FD8179-H
Vivotek FD8366-V
Vivotek FD8377-HV
Vivotek FD8379-HV
Vivotek FD8382-VF2
Vivotek FD9371-HTV
Vivotek FE9191
Vivotek IB8367A
Vivotek IB8377-H

Vivotek IB8379-H
Vivotek IP8160
Vivotek IZ9361-EH
Vivotek MD8565-N
Vivotek MS8392-EV
Vivotek SD9366-EHL
VMI DVR-3216-SV
WAMA TS3-V36W
WAMA TS5-V36W
WAMA TV2-V36W
WAMA TZ2-T423
WCA FISH4MP
WCA IPDH20H800
WCA LBH30S400W
WCA PTBK4XS400
WCA SL200TC
Zenitel TCIV-2
Zirion ZHVR-2032
Zirion ZSA-004AHD
Zirion ZSA-008AHD
Zirion ZSA-016AHD

2.2.2 I/O Devices

Bosch B8512G
Bosch B9512G
Fiber SenSys FD-341
ISSO TCR-88ES
ISSO TCR-IR/CA
NSE MTCP-4E4S
PIDSPRO PCB

2.3 Changes in I/O Device licensing

The I/O Devices will now be licensed for the number of I/O ports. In this new licensing system 1 license is required for every 24 ports of a single device (Input or output, whichever is greater), requiring at least 1 license per device.

For example:

- 2 devices with 16 inputs and 16 outputs each will use 2 licenses (1 license for each device)
- 1 device with 32 inputs and 32 outputs will use 2 licenses (2 licenses for the same device)
- 2 devices, being 1 with 16 inputs and 0 outputs and another with 32 inputs and 0 outputs will use 3 total licenses (1 license for the first device and 2 licenses for the second device)

2.4 Fixes

- Fixed an issue where the surveillance client might not connect to a server if the base license was not installed
- The option of triggering LPR records when the license plate is not recognized using a physical sensor might not work in some cases
- Fixed a small problem in email text in case of error in archiving
- Fixed an internal error on the analytics server that could crash the server during a Tamper event
- Fixed ITX device drivers that could cause server problems while stopping a camera
- The output action selection screen was not displaying the actions of devices that had the same name

(for example, a camera and an I/O device with the same name)

- The LPR Neural Labs engine was not working properly with external trigger
- Fixed a map object binding problem that could show disabled objects in the Monitoring Client
- Fixed a problem in H.264 and H.265 parser that could crash server and clients
- Fixed a problem in the H.264 parser that was not properly parsing images with 2 fields instead of 1 frame
- Fixed a problem in HTTP API where connections were not being closed properly
- Fixed an issue that prevented video playback from Explorer servers through the Enterprise Edition Surveillance Client
- The RTSP server was not using RTCP packets as a keep-alive mode when using RTSP over TCP, causing the connections to be closed
- Fixed an integration problem with 3M LPR cameras
- Fixed a problem that could crash the surveillance client when using the video buffer for live cameras
- The "End Interval" setting for motion detection in the Admin Client was directly linked to the "Use External Notification" option, however this option works for both external notification and software detection and the option has now been adjusted accordingly
- Fixed a rare problem when loading maps created through the Administration Client running on a computer with different decimal separation settings
- When sending an e-mail with a playback file, the server does not end up adding its ID to connect the cameras correctly, which could cause problems during playback if the Surveillance Client connected to another server with cameras with the same name
- Exporting cameras with the same name but different servers will now be possible
- Fixed a problem of Google Maps integration in the Administration Client
- The camera address field in the Administration Client was not accepting the "_" character
- A firmware issue with Dahua cameras was preventing authentication on the connection to these devices. The system has been changed to work around the camera problem.
- The Surveillance Client closes with an error when opening the timer view registration screen on systems with thousands of cameras and views
- The analytic metadata renderer might not render objects information correctly in the first frame where the object appears
- Fixed the Explorer edition ActiveX plugin for live viewing that did not display the objects after connecting to the server
- Fixed a problem viewing emails sent with photos through the standard iOS email reader
- Some Dahua devices were not responding correctly to the authentication request. The system has been changed to work with this camera issue
- In the Administration Client, when the user changed the model of a device that had audio enabled in the media profile and the new model did not support audio, the stream was not opened
- Live cameras configured less than 1 frame per second were not being displayed correctly by the Surveillance Client
- Fixed a problem in the auto screenstyle that could cause internal problems while removing objects from it
- On some Windows 10 computers, the Administration Client screen-style management screen was slow
- The Privacy Mask configuration screen in the Administration Client was not resizing the image to fill the entire screen
- Fixed a problem in the Surveillance Client when moving a "full screen" object from one monitor to another monitor to a blank space. The objects on the first monitor were hidden, causing some usability issues
- Fixed a performance issue while scrolling the video playback timeline. The video should now be displayed faster.
- Fonts in Chinese in reports was not displayed correctly
- When archiving was copying images, it was not possible to save or change any system camera
- The export complete message could disappear if an auto close alarm screen was opened during video

export, causing the Surveillance Client to crash

- In a Surveillance Client with 2 or more monitors, if the same View was being viewed on 2 or more monitors, when changing and saving this view, only 1 monitor was updated
- Sending all objects to the Virtual Matrix via an alarm popup was not working
- Fixed a problem where the camera could be out of service on the server if its model was changed, and the new model did not have an I/O driver while an I/O event had been configured through the previous camera model with support for I/O
- Searching for events in the Surveillance Client using the Enterprise client, connecting to a Standard server was not working
- When installing a new license, it was not possible to postpone the license registration
- It was not possible to select a camera via the DGF-KB1000 Digifort Keyboard if the system was connected to a Normal server + Failover server
- An HTTP action will no longer be executed if the event URL is not filled
- AAC Audio with ADTS header was not working with RTSP Server and exporting video in .MP4 format