

Digifort Explorer Manual
Surveillance Client
Version 6.7.0.0
Rev. A

Índice

Part I Welcome to Digifort Explorer Manual	5
1 Screen Shots.....	5
2 For whom this manual is intended.....	5
3 How to use this manual.....	5
4 Prerequisites.....	5
Part II The Surveillance Client	7
1 How to execute the Surveillance Client.....	7
Configurations button	8
Recordings button	9
Virtual Keyboard	9
Event Log	10
Close button	10
Update Button	10
Full-screen button	10
Button Minimize to System Tray	10
Controls	11
PTZ Controls Options.....	11
Focus Button	11
Digital PTZ Button.....	11
Iris Button	11
Screen wiper.....	12
PTZ Surveillance Button	12
Audio	12
Listen	12
Speak	12
List cameras	14
Volume	14
Screenstyles Options	14
List of Objects	14
Camera Status	20
Part III Configuring the Surveillance Client	22
1 General Configurations.....	22
Remember the last selected view when opening the system	23
Initialize the surveillance client upon initialization of the operating system	23
Hide tool bars on startup	23
Standard directory for exporting	23
Control bars	23
Screen	23
List of objects	23
Show deactivated cameras	24
2 Configuring the servers being monitored.....	24
Adding, changing and removing a server	25
3 Live Surveillance Configurations.....	27

4	Audio Settings.....	30
5	Configurações do Multi Monitor //OLD: Multi-Monitor Configurations.....	31
6	Digifort Keyboard Controller.....	32
7	Modifying the user password.....	33
Part IV	Working with Screenstyles	36
1	Working with panamorphic lenses.....	37
2	How to configure the image filters.....	39
Part V	Alarmes	43
1	Message.....	44
Part VI	Video Playback	46
1	Playing videos back.....	46
	Playing audio back	53
	PTZ on playback	54
2	Playing Exported Videos Back.....	54
3	Quick video playback.....	55
Part VII	PTZ	58
1	Movement by screen controls.....	58
2	Movement by Click-and-Center.....	59
3	Movement via the Digital PTZ.....	59
Part VIII	Event Log	62
1	Record detail.....	63
2	Filters.....	64
	Filter per date	64
	Filter per communication errors	65
	Filter per recording errors	65
Part IX	Interface Web	68
1	How to access the Web Server.....	68
2	Monitoring via web access.....	69
3	Playing videos back via web access.....	71
	Index	0

Chapter



1 Welcome to Digifort Explorer Manual



This User Manual and Technical References provide all the information needed to effectively implement and use all of the basic and advanced features found in the Digifort System's Surveillance Client Explorer.

This manual is constantly updated and does not include the features for Digifort's Beta versions.

1.1 Screen Shots

The screen shots contained in this manual may not be identical to the interface that you will see using the Surveillance Client. Some differences may appear, with no impairment in use of this manual. This is due to the fact that frequent updates and the inclusion of new features are carried out with the purpose of continuous improvement of the system.

1.2 For whom this manual is intended

This manual is directed toward the administrators and operators of surveillance stations.

1.3 How to use this manual

This manual is structured into chapters, topics, and sub-topics.

The names of the Digifort System modules and concepts involved with the system are printed in *italics*.

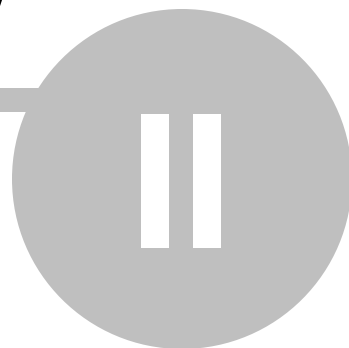
The items where the user has to interact with buttons, menus and screen names are in **bold**.

1.4 Prerequisites

For complete appreciation of the content of this manual, some prerequisites are necessary:

- Use of computers and their peripherals equipment.
- Use of the Microsoft Windows operating system.
- Knowledge of client-server architecture.
- Knowledge of computer network architecture.

Chapter



2 The Surveillance Client

The Surveillance Client is the module responsible for the surveillance of cameras and the receipt of alerts configured by the administrator.

The Digifort System allows simultaneous surveillance of several cameras at the same time by way of views, which can be dynamically created. It offers the capacity of controlling movable cameras with PTZ functions (Pan Tilt Zoom) and IO control, permitting the setting off of alarms, the opening of electronic doors and the receipt of alerts from motion sensors.

It's also possible to execute video recording in local HD, creating a copy of the images received from the selected cameras in the surveillance station, allowing for the recording of this part of video in a CD or DVD for later visualization in any other computer.

Like the Administration Client, the Surveillance Client also has the capacity to monitor several servers simultaneously. With this feature, images of various cameras can be monitored alone or mixed in a view in a way transparent to the user. Using a set of special tools, it allows for live detection of motion and automatic control of image quality.

The Surveillance Client also allows interoperability among the Explorer, Standard and Enterprise versions, that is, the Surveillance Client can monitor cameras of servers of other versions.

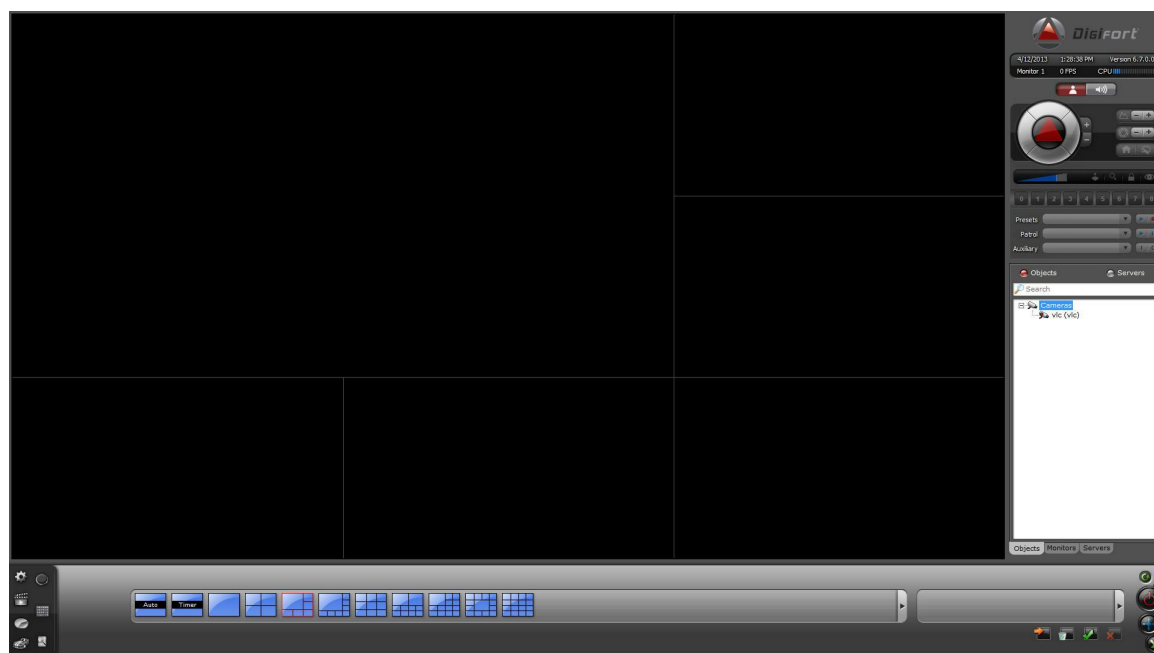
Attention

It's not recommended to execute the Surveillance Client in the same computer as the Digifort Server, except for small installations, as the processing used by the Surveillance Client for displaying cameras in the screen could hinder the recordings carried out by the Digifort Server. This is due to the fact that the Surveillance Client needs to decode the images for displaying on the screen, and, depending on the number of cameras in the screen, this processing can be high

2.1 How to execute the Surveillance Client

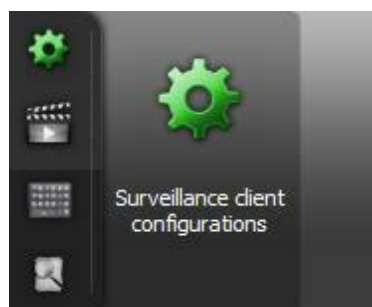
To access the Surveillance Client, locate the Digifort Surveillance icon on your Desktop Digifort 6.7.0.0 Monitoramento in Start->Programs->Digifort->Clients->Surveillance.

The following should show up on the screen:



This is the main Surveillance Client screen and will give you the following tools:

2.1.1 Configurations button



Opens the configurations screen of the Surveillance Client.

2.1.2 Recordings button



Opens the recordings screen, in which you will be able to select any camera of the system and visualize the recorded videos filtered by date and time.

2.1.3 Virtual Keyboard



Opens the Digifort virtual keyboard.



The surveillance client can use the virtual keyboard without needing a physical keyboard.

2.1.4 Event Log



Opens the Event Log Screen.

To learn about this feature see chapter [Logs de eventos](#) 62

2.1.5 Close button



Closes the surveillance client.

2.1.6 Update Button



Updates the Surveillance Client configurations.

Whenever changes are made to the user configuration in the Administration Client, this button must be pressed to ensure the command is effected. All other configurations made to the Administration Client are automatically updated in the Surveillance Client.

2.1.7 Full-screen button



Expands the space reserved for visualization of the camera by filling the entire screen. To return to the normal mode, press the ESC key on your keyboard.

2.1.8 Button Minimize to System Tray



Minimizes the system in the same bar where you can find the Windows clock

2.1.9 Controls

To enter on **Controls** mode, click as shown below:



2.1.9.1 PTZ Controls Options

The Surveillance Client has the basic PTZ controls in its main screen, as shown in picture below.



The functioning of PTZ controls will be detailed in the [PTZ](#) ⁵⁸ section.

2.1.9.2 Focus Button



Zooms in or out if the camera includes this function.

2.1.9.3 Digital PTZ Button



Activates or deactivates the Virtual PTZ in Dome cameras

2.1.9.4 Iris Button



Increases or decreases the camera's iris opening, if this exists.

2.1.9.5 Screen wiper



Activates the camera's screen wiper, if this exists.

2.1.9.6 PTZ Surveillance Button



Pauses or begins PTZ surveillance. To learn how to create PTZ surveillance, refer to the Administration Client manual.

2.1.10 Audio

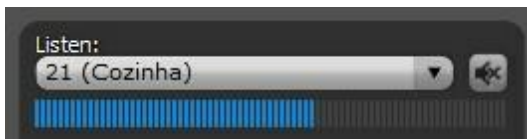
To enter in audio mode, click the button as shown below:



Digifort has the functionality to listen to audio from a camera and send an audio to your speakers.

2.1.10.1 Listen

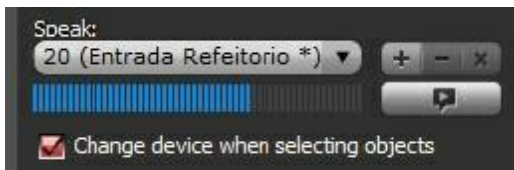
You can listen to a camera by simply selecting it in the box as shown in the picture below or by clicking on its image in the mosaic.



- **Mute button:** Mutes the audio from the camera
- **Volume bar:** Shows the audio volume in real time

2.1.10.2 Speak

Some cameras allow audio to be sent to your speakers, ie the operator can talk through the camera.



To speak, simply select the camera in the box and click on the button below:



NOTE: To speak, the operator must maintain the above button pressed.

It is possible to speak to multiple cameras simultaneously, ie sectorize the audio areas.
To create a group of cameras to send the audio, simply click on the + sign and the following window will open:



The screenshot shows a dialog box titled "Audio output device group". It has a dark gray header bar with a red "X" close button on the right. The main area contains three text input fields. The first field is labeled "Name" and contains the text "External". The second field is labeled "Description" and contains the text "Audio to external cameras". The third field is labeled "Group devices" and contains the text "Devices". Below these fields are four buttons: "Add", "Delete", "OK", and "Cancel". The "Add" and "Delete" buttons are positioned side-by-side, and the "OK" and "Cancel" buttons are positioned side-by-side below them.

- **Name:** Name of camera group
- **Description:** Description of the group created
- **Devices:** Click on **Add** to enter the cameras in the group

To change a group you created, select it and click on the button: -

To delete a group you created, select it and click on the button: +

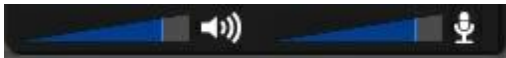
2.1.10.3 List cameras



- **List only the cameras on screen:** Select for the selection boxes to only show the cameras that are in the current mosaics, otherwise, all cameras will be available.

2.1.10.4 Volume

Adjust the volume of your speaker and microphone by dragging the blue bars shown in the image below:



2.1.11 Screenstyles Options

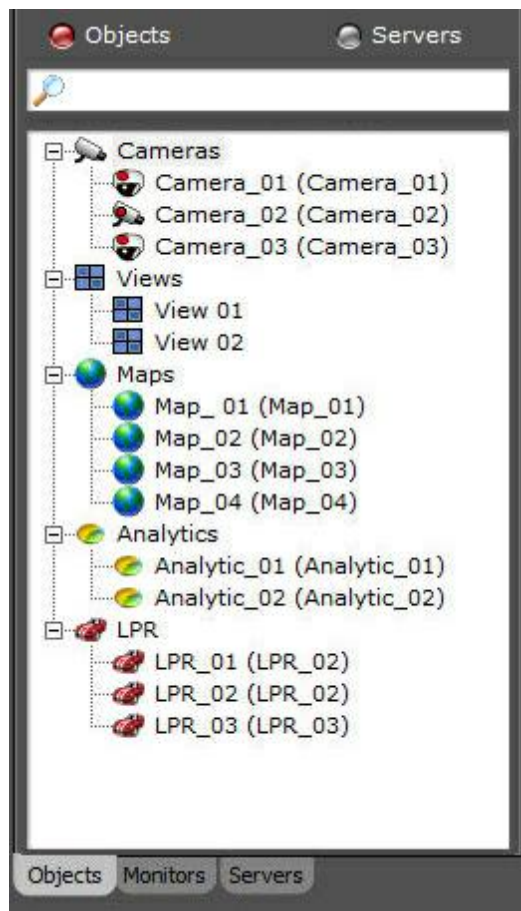
The Surveillance Client has eight Screenstyles, which are located in the lower part of the system, as shown in picture below.



The functioning of the Screenstyles will be detailed in the [Working with Screenstyles](#) ³⁶.

2.1.12 List of Objects

The list of objects includes all Digifort's visual functionalities as shown in the picture below:



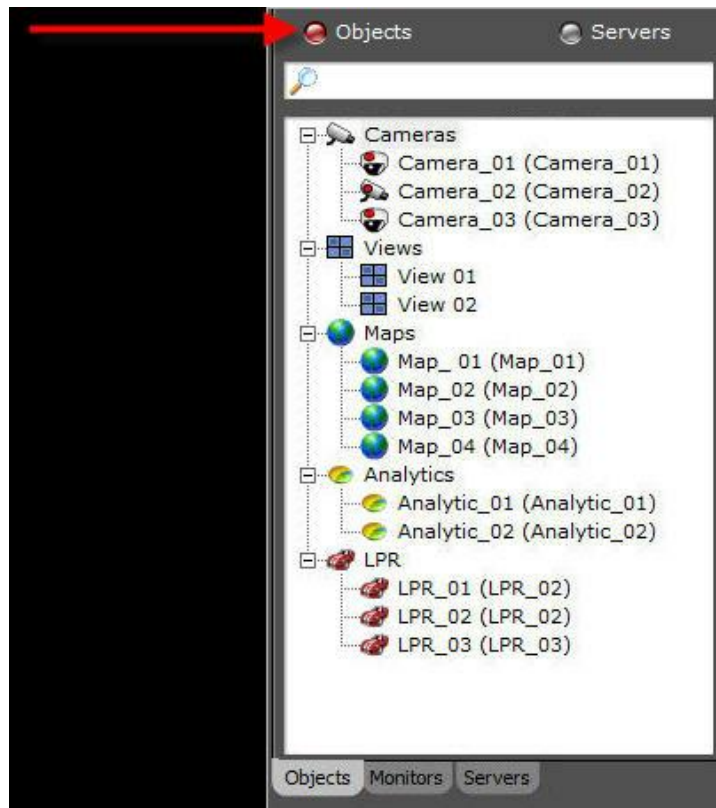
The picture above shows all the objects found in Digifort:

- **Cameras:** Shows all the cameras registered in the Administration Client. To see the view of the camera click on its icon and drag towards a screen style.
- **Screen styles (Views):** Shows all the screen styles saved in the Surveillance Client per category. Example: Only screen styles with 4 cameras, 6 cameras, etc). To see the screen style double click on its icon.
- **Maps:** Shows all the maps registered in the Administration Client. To see the map click on its icon and drag it to a screen style.
- **Analytics Records:** Shows all the analytic records registered in the Administration Client. To see the analytic records click on the icon and drag it to a screen style.
- **LPR (License Plate recognition):** Shows the objects for plate recognition registered in the Administration Client. To see the LPR click on its icon and drag it to a screen style.

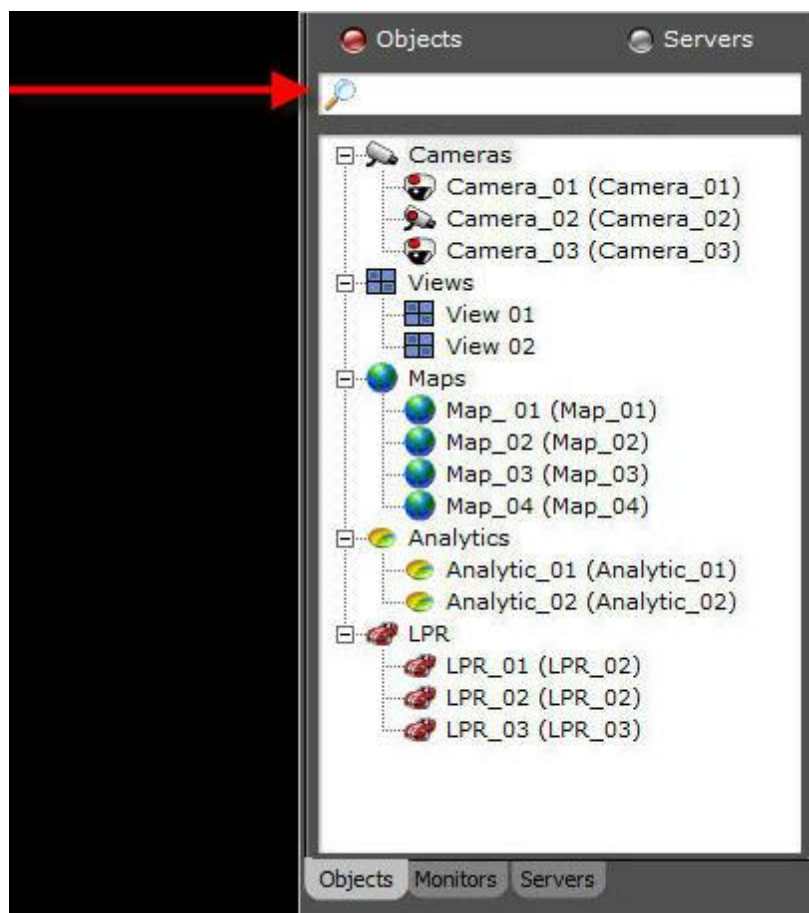
+ Nota

The objects appear according to each user's rights. To understand how to configure the user right, refer to the Administration Client manual.

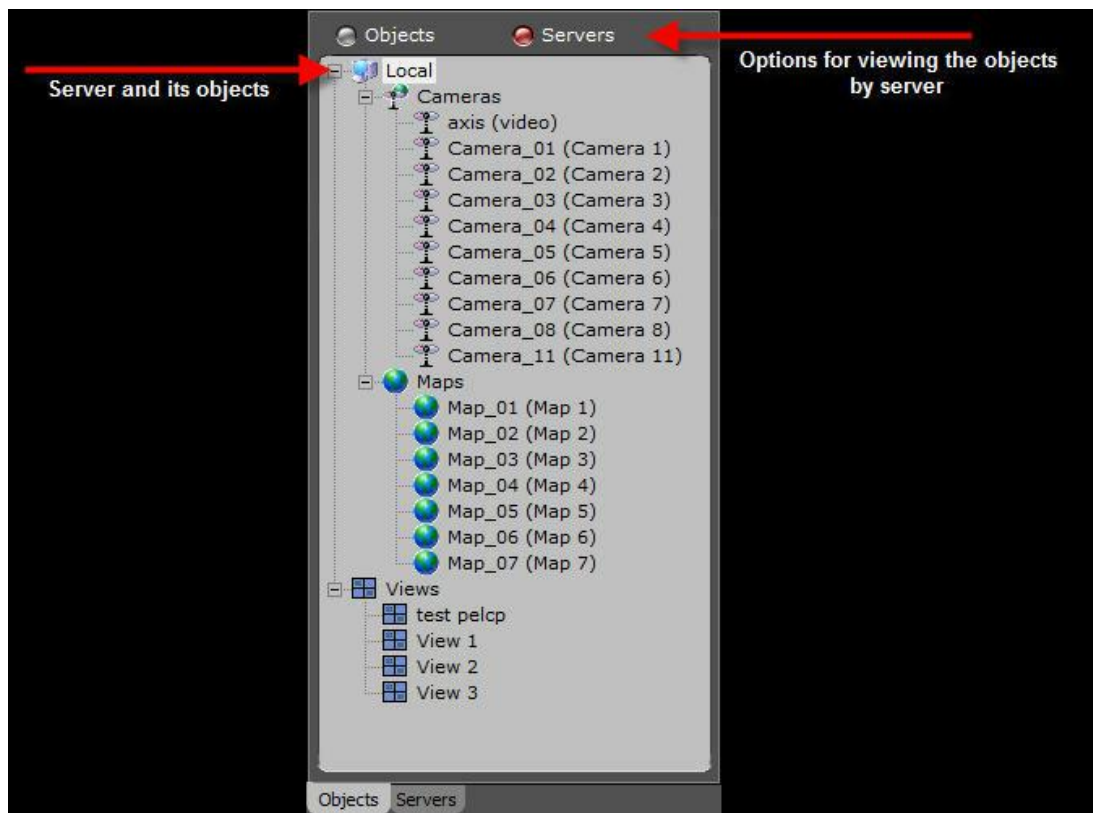
After registering the servers (see [Configuring the server to be monitored](#)²⁴), if the surveillance client is updated, the objects registered on the server can be seen on the list at the side as shown below:



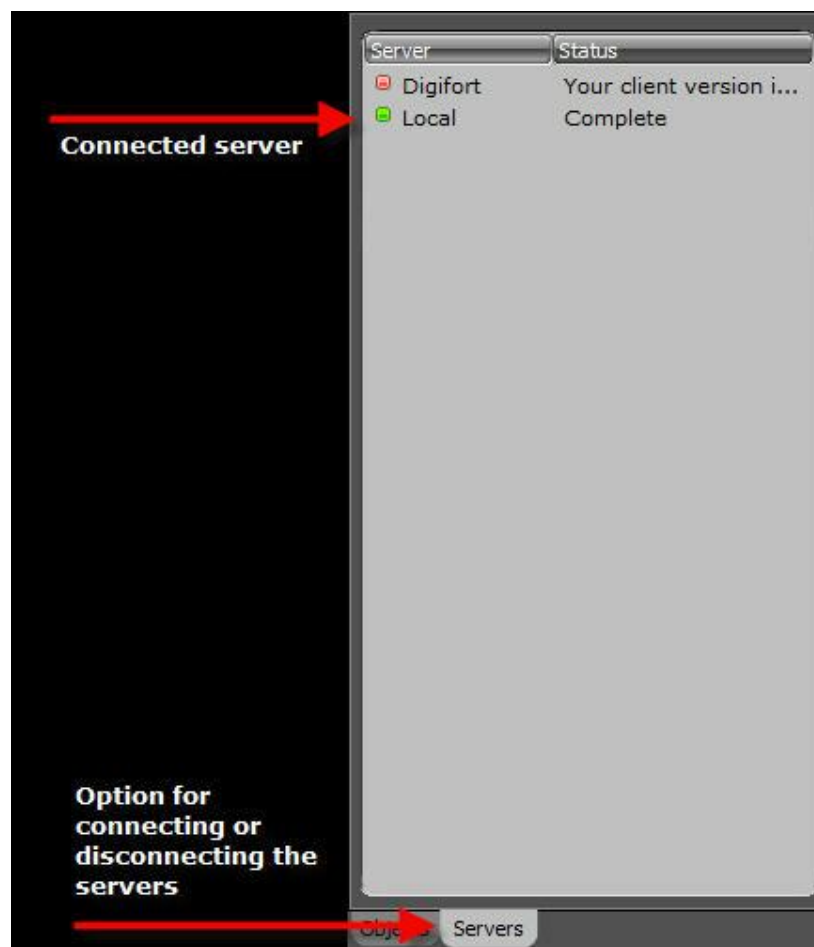
In the list of objects you can use a search to quickly find a specific object. To use the filter just enter in the field indicated in the figure below:



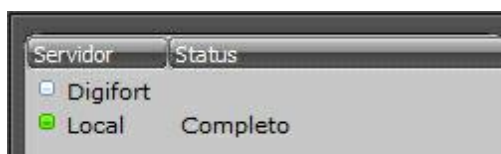
Another view option is to click on Servers and from here you can separate the objects into their respective servers as shown below:



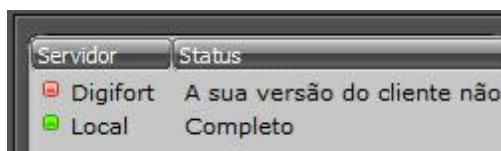
To check status, connect or disconnect the registered servers, click on the Servers option as shown below:



To disconnect a server, simply double-click on it. In the picture below, the 'Digifort' server has been disconnected..



If there is a problem with the server connection, an error message is shown on the Status column. The picture below shows an error in the 'Digifort' server where the system's versions are incompatible.



2.1.12.1 Camera Status



This icon means that the camera in question is a Dome camera, i.e. it includes the Pan or Tilt features.



This icon means that the camera in question is a Dome camera, i.e. it includes the Pan or Tilt features.



These icons mean that the camera in question is deactivated at the Administration Client.



These icons mean that the camera in question is activated but is not recording



These icons mean that the camera in question is activated and recording.



These icons mean that the camera in question is activated, recording and detecting movement. The detection of movement is only indicated if the camera is recording by movement or has some sort of alarm configured for movement. (To learn about movement detection, refer to the Administration Client manual).



These icons mean that the camera in question is out of order.

Chapter



3 Configuring the Surveillance Client

This area of the system allows you to configure and customize the Surveillance Client. It's necessary to specify the servers that will be monitored and the parameters of the Surveillance Client environment.

To access the configurations area, click on the Configurations button located on the tool bar on the right side of the system.

If you add, modify, or exclude any server in the configuration of the client, then you must click on the Update button so that the Surveillance Client reconnects to the servers using the desired configurations. Any other modification of the configurations will be applied when a new view or camera is selected in the screen.

3.1 General Configurations

As explained above, the following screen will appear when you click on the Configurations button::



This is the Surveillance Client's general configurations screen which provides the following options:

3.1.1 Remember the last selected view when opening the system

When you select a view or a camera, the system automatically keeps your reference so that when the Surveillance Client is reopened, the same camera or view reappears automatically in the screen. If this option is not marked, no camera or view will be loaded automatically for exhibition when the Surveillance Client is opened.

3.1.2 Initialize the surveillance client upon initialization of the operating system

Inicia o Cliente de Monitoramento quando o sistema operacional iniciar automatizando o processo de monitoramento das câmeras.

3.1.3 Hide tool bars on startup

Hide the control bars when system is started

3.1.4 Standard directory for exporting

Defines a standard pattern to save screen photos and exported videos.

3.1.5 Control bars

This option allows for the positioning of the side bar on the left or right of the monitor.

- **Left:** Positions the bar on the left of the screen.
- **Right:** Positions the bar on the right of the screen.

3.1.6 Screen

This option allows Digifort to be have windows like those of Windows or in fullscreen.

- **Windowed:** Digifort behaves like a Windows window with the minimization, maximization and resizing options.
- **Full screen:** Digifort will occupy the entire screen.

3.1.7 List of objects

You can choose how the identification of objects will appear in the list of objects in the [Object List](#)¹⁴ monitoring client

- **Name and Description:** Displays the name and description of the camera.
- **Name only:** Displays only the name of the camera in the list.
- **Description only:** Displays in the list only the camera description

3.1.8 Show deactivated cameras

The deactivated cameras are shown in the list of objects.

3.2 Configuring the servers being monitored

To configure the servers to be monitored by the Surveillance Client click on the Configurations button as previously explained, then click on the Servers tab and the following screen is shown:



This is the server configurations screen. In this screen you can configure which servers the Surveillance Client will be monitoring.

Keeping in mind that the Digifort System is based on a client-server structure, you can add as many servers as you like, keeping them on your local network or Internet. In this way, the Surveillance Client can monitor all of them uniquely, as if it were a single server.

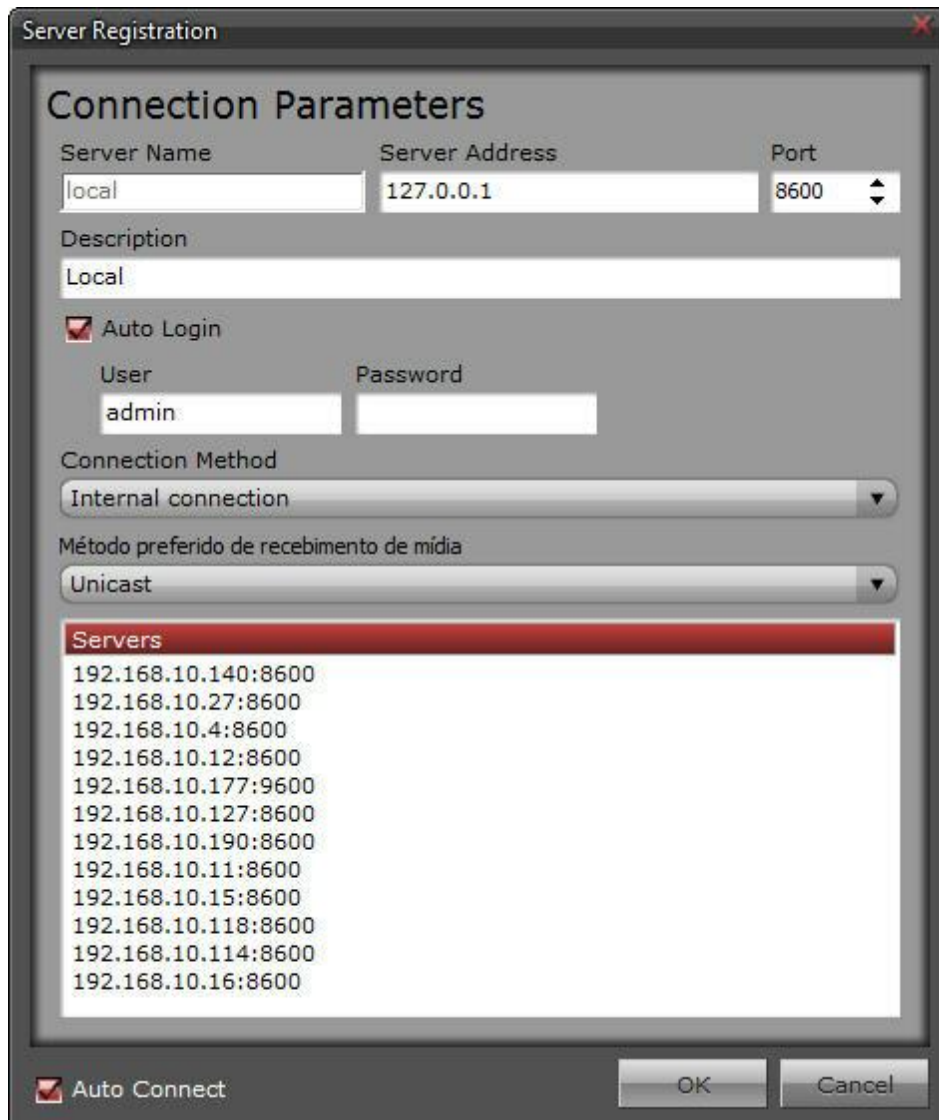
 **Note**

When adding, changing or removing a server, the Surveillance Client must be updated by clicking on the Update button on the main screen.

3.2.1 Adding, changing and removing a server

To add a server, click on the Add button; to change a server select the server wanted from the list of servers and click on the Change button, or, if you prefer, double-click on the server selected. To remove a server, select it and click on Remove.

The figure below shows the screen where you can add or change servers.



The screenshot shows the 'Server Registration' dialog box. It has a title bar with a close button. The main area is titled 'Connection Parameters'. It contains several fields: 'Server Name' (text box with 'local'), 'Server Address' (text box with '127.0.0.1'), and 'Port' (spin box with '8600'). Below these is a 'Description' text box with 'Local'. There is a checked checkbox for 'Auto Login'. Below that are 'User' (text box with 'admin') and 'Password' (text box). There are two dropdown menus: 'Connection Method' (set to 'Internal connection') and 'Método preferido de recebimento de mídia' (set to 'Unicast'). At the bottom is a list box titled 'Servers' containing a list of IP addresses and ports. At the very bottom are a checked checkbox for 'Auto Connect' and 'OK' and 'Cancel' buttons.

Servers
192.168.10.140:8600
192.168.10.27:8600
192.168.10.4:8600
192.168.10.12:8600
192.168.10.177:8600
192.168.10.127:8600
192.168.10.190:8600
192.168.10.11:8600
192.168.10.15:8600
192.168.10.118:8600
192.168.10.114:8600
192.168.10.16:8600

- **Server name:** Give the server an identification name. Once saved, this name cannot be changed as it will be used to identify the server in the Surveillance Client.
- **Server IP:** Fill in this field with the server's IP address. A DNS address can also be used.
- **Port:** Type the connection port with the server; the standard port is 8600.
- **Description:** Type a short description for the server only used to help it being identified in the system by the operator.
- **Auto Login:** This option enables the user and password fields to be filled in. By enabling this option, whenever the Surveillance Client is executed or updated it will use the username and password provided to make the authentication in the server. If this option is unchecked, the user must type his username and password to enter the login screen which appears when the client connects to the server.
- **Connecting:** Select Internal Connection if the server is on your local network or External Connection if it is on the Internet. The Internal Connection option uses the Private IP configurations, and the External Connection uses the Public IP configurations. Those configurations are carried out in the Administration Client for each camera.
- **Method to receive media:** In this option, it's best to choose the Onicast or Multicast method to send video to the client. To find out more about the Multicast sending method refer to the monitoring client manual
- **Active:** Uncheck this option if you don't want the Surveillance Client to connect with this server. By unchecking this option no camera on this server will be available for viewing.
- **Servers:** Shows all the Digifort servers found on the network. Double-click on one of the servers on the list and the Server IP and Port will be automatically filled in.
- **Automatic Connection:** Enables the Surveillance Client to automatically connect to the server when starting or updating.

Once the parameters have been filled in, click on OK to save the server or click on Cancel to cancel your editing..

Important

If the user password informed in the auto-login fields is modified by the administrator in the Administration Client or modified by the user himself by way of the password modification module, the values informed here must be updated.

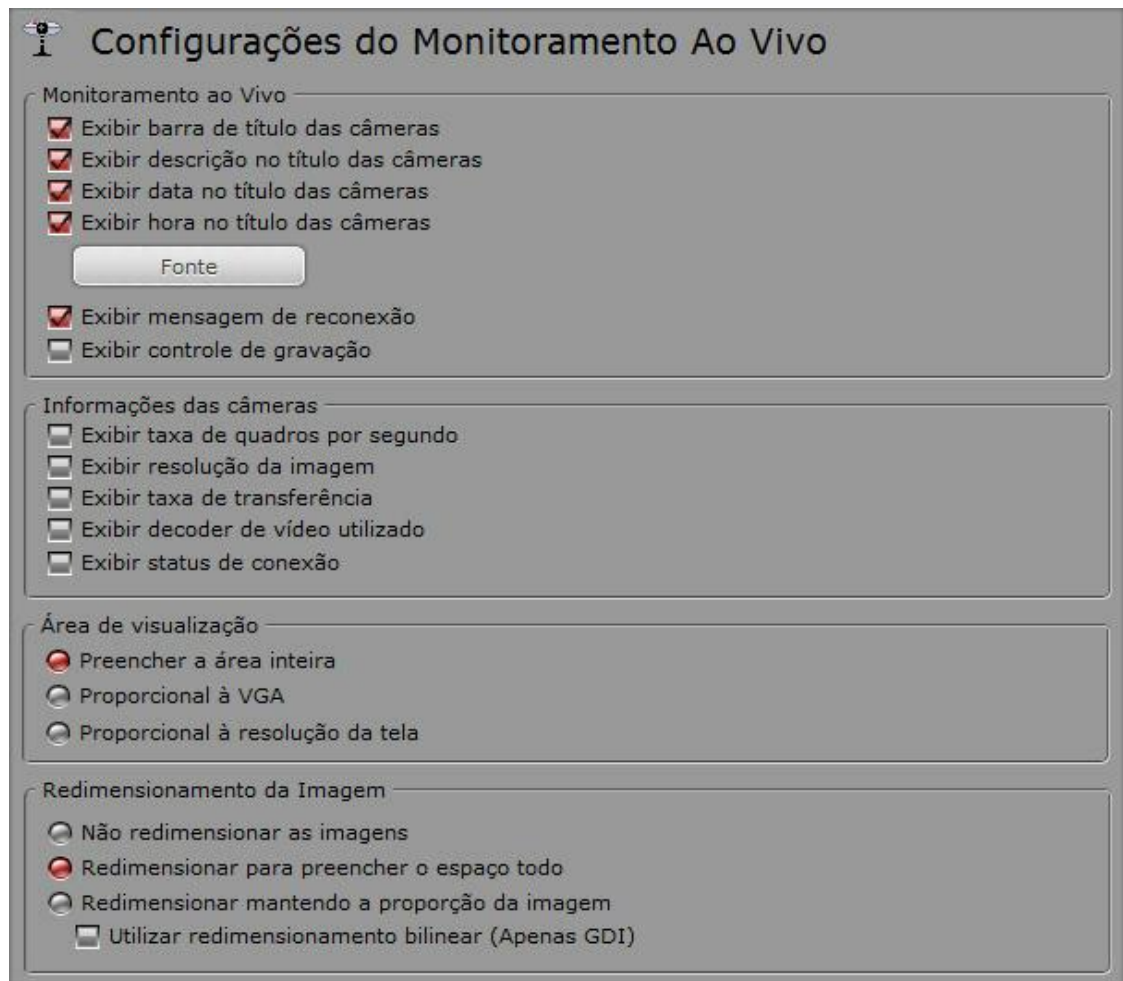
Dica

If the Digifort Server is executing in the same computer as the Surveillance Client, the Loopback

IP identified by 127.0.0.1 can be used.

3.3 Live Surveillance Configurations

After clicking on the Configurations button, as explained before, and on the Live Surveillance tab, the following tab will be displayed:



Configurações do Monitoramento Ao Vivo

Monitoramento ao Vivo

- ☒ Exibir barra de título das câmeras
- ☒ Exibir descrição no título das câmeras
- ☒ Exibir data no título das câmeras
- ☒ Exibir hora no título das câmeras

Fonte

- ☒ Exibir mensagem de reconexão
- ☐ Exibir controle de gravação

Informações das câmeras

- ☐ Exibir taxa de quadros por segundo
- ☐ Exibir resolução da imagem
- ☐ Exibir taxa de transferência
- ☐ Exibir decoder de vídeo utilizado
- ☐ Exibir status de conexão

Área de visualização

- ☒ Preencher a área inteira
- ☐ Proporcional à VGA
- ☐ Proporcional à resolução da tela

Redimensionamento da Imagem

- ☐ Não redimensionar as imagens
- ☒ Redimensionar para preencher o espaço todo
- ☐ Redimensionar mantendo a proporção da imagem
- ☐ Utilizar redimensionamento bilinear (Apenas GD1)

This configuration is divided into three parts: live surveillance configuration, camera information, and configuration of image resizing.

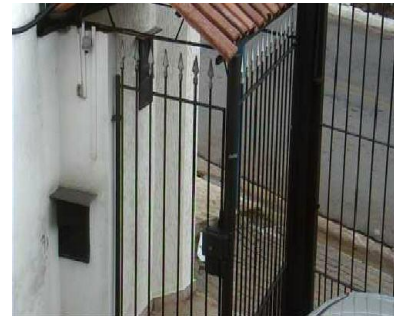
- **Show cameras title bars:** Displays a black bar where the information of the camera is positioned at the top of the image.
- **Show description on camera title:** Displays the description of the camera at the top of the image.

- **Show date on camera titles:** Display the current date at the top of the image.
- **Show time on camera titles:** Display the current time at the top of the image
- **Fonts:** Option to change the font with which the descriptions of cameras will be displayed.

With all previous options active



With no previous option active



- **Display reconnection message:** When the communication with the camera fails for any reason and this option is enabled, the Surveillance Client will show a message of reconnection. The picture below shows the working of this feature:



- **Display recording controls:** Displays the recording controls, allowing the operator to record the desired camera images in the surveillance station itself for later visualization. To learn how to use this feature, see Executing Local Recording.
- **Display frames per second rate:** Displays the frames per second rate in the image of the camera.
- **Display transfer rate:** Displays the band width used by the camera in the image of the camera.
- **Display video decoder used:** Displays the decoder used for image decoding of the camera.
- **Fill in the area:** Causes the cameras to use the entire viewing area.

- **Proportional to VGA:** The cameras will be proportional to the type of screen. That is, on a widescreen monitor, the images will not be distorted. Proportional to screen resolution: Causes the images to be proportional to the resolution of the screen. For example: 1280 x 1024, 1280 x 800, etc.
- **Don't resize the images:** The images arriving from the cameras will be shown in their real size. If the image resolution is smaller than the space reserved for it, the image will be small, and if the image is larger than the space reserved for it, some of its parts will be lost. The picture below shows the working of this feature.



- **Resize to fill all of the space:** The images arriving from the cameras will be resized so that they occupy all of the space reserved for them. The picture below shows the working of this function.



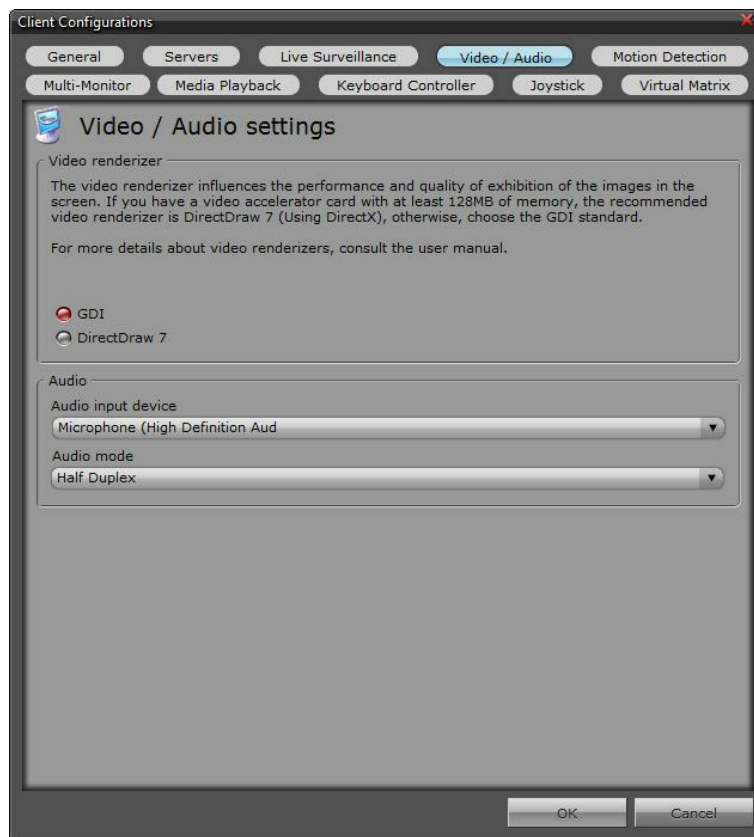
- **Resize maintaining image proportion:** Resizes the images coming from the cameras in such a way as to resize height and width proportionally.
- **Use bilinear resizing:** When the camera images are resized to a larger-than-natural size, some distortions can occur. With this feature enabled, the images will undergo a filter to minimize this distortion, keeping the image quality as close as possible to the real image.

Important

When bilinear resizing is activated, more processing power is required from the surveillance station, since the correction of image distortion is executed using complex algorithms.

3.4 Audio Settings

Digifort allows some audio settings are customized at Surveillance Client. Click on the tab **Video / Audio** and the following screen appears:



- **Audio input device:** Select the device to capture audio. Digifort detect the devices recognized by Windows.
- **Audio mode:**
 - **Half Duplex:** While sound is sent to the camera can not listen any audio
 - **Full Duplex:** You can listen and talk at the same time.

3.5 Configurações do Multi Monitor //OLD: Multi-Monitor Configurations

Digifort has a feature which makes it possible to use several interconnected monitors in one single surveillance station, creating an individual surveillance screen on each monitor where, for example, you can show a surveillance screen style on one of the monitors and a single camera on the others. In this way, by adding several video cards, Digifort can work as a decoder and image multiplexer for as many cameras as are needed.

To access this feature, clique on Configurations (as explained in the topic above) and then click on the Multi-Monitor guide as shown in the figure below:



- **Activating the multi monitor support:** Activates the multi-monitor support.
- **Detected monitors:** Number of monitors detected at your work station.
- **Total monitors to be used:** Select the number of monitors to be used.
- **Define a standard monitor for the Media Playback:** Defines on which monitor the Digifort media playback will appear when opened.

Note: To know the limitations of your version of Digifort see the array of resources on our Website:
<http://www.digifort.com.br/feature-matrix>

3.6 Digifort Keyboard Controller

Digifort can be integrated with the Digifort keyboard Controller. Such keyboard controller enables the user to have complete control of the Surveillance Client without having to use a mouse or keyboard. Below is a photo of the :



For information on this guide, refer to the Digifort Keyboard Manual

3.7 Modifying the user password

The Surveillance Client is equipped with a function for changing the password of users logged into the servers. To do this, press the F12 key of your keyboard, displaying the password modification screen, as shown in the picture below.



All users in the servers to which you are connected and their respective users are listed in this screen.

To change the password of some user, double-click on the desired server, opening the screen below:

A screenshot of a 'Change Password' dialog box. The title bar says 'Change Password' with a close button. Inside, there's a user icon and the text 'Change Password' followed by 'Supply the new password for authentication of your user in this server'. Below this, it shows 'Server: Local' and 'User name: admin'. There are three text input fields labeled 'Current Password', 'New Password', and 'Confirm Password'. At the bottom are 'OK' and 'Cancel' buttons.

Change Password

Supply the new password for authentication of your user in this server

Server: Local
User name: admin

Current Password

New Password

Confirm Password

OK Cancel

Enter the current password, the new password, and the confirmation of the new password.

If all data is correct, the password will be modified and must be used during the next log-in.

If the server with the modified password has the auto-login option enabled, it will be necessary to modify this configuration, entering the new password.

Chapter



IV

4 Working with Screenstyles

The Explorer version of Digifort offers eight different screenstyles. For each screenstyle an unlimited number of views can be created, categorized by the screenstyles for which they were created, that is, when the screenstyle for four cameras is selected, only the views for four cameras will be listed in the view selection.

Upon creation of a view, it will be saved in the profile of the user logged into the Surveillance Client. Thus, each user can have his own customized views.



Automatic screenstyle: This screenstyle permits the creation of views of automatic sizing, that is, as many cameras as necessary can be inserted into this view, which automatically resizes the space reserved for each camera in such a way that all of them can be displayed in the screen simultaneously.



Timer screenstyle: This screenstyle permits the creation of sequences of cameras and views that will be displayed alternately on the screen with a time specified by the user.



Screenstyle for one camera: This screenstyle permits the visualization of a single camera in the screen.



Screenstyle for four cameras: This screenstyle permits the creation of views for addition of up to four cameras to be displayed simultaneously.



Screenstyle for eight cameras: This screenstyle permits the creation of views for addition of up to eight cameras to be displayed simultaneously.



Screenstyle for ten cameras: This screenstyle permits the creation of views for addition of up to ten cameras to be displayed simultaneously.




Screenstyle for thirteen cameras: This screenstyle permits the creation of views for addition of up to thirteen cameras to be displayed simultaneously.

4.1 Working with panamorphic lenses

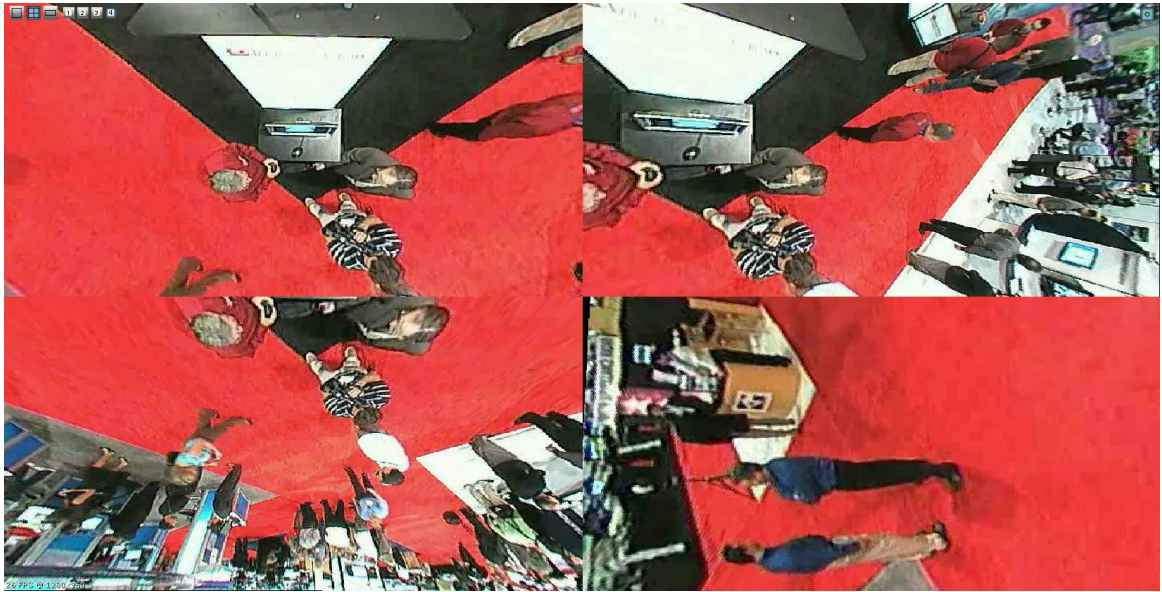
To understand what Panamorphic Lens is, see the Administration Client Manual.





By placing a camera with Panamorphic lenses on the screen, the following buttons are available:

 Virtual PTZ: Allows you to navigate the camera with an image in dewarp.



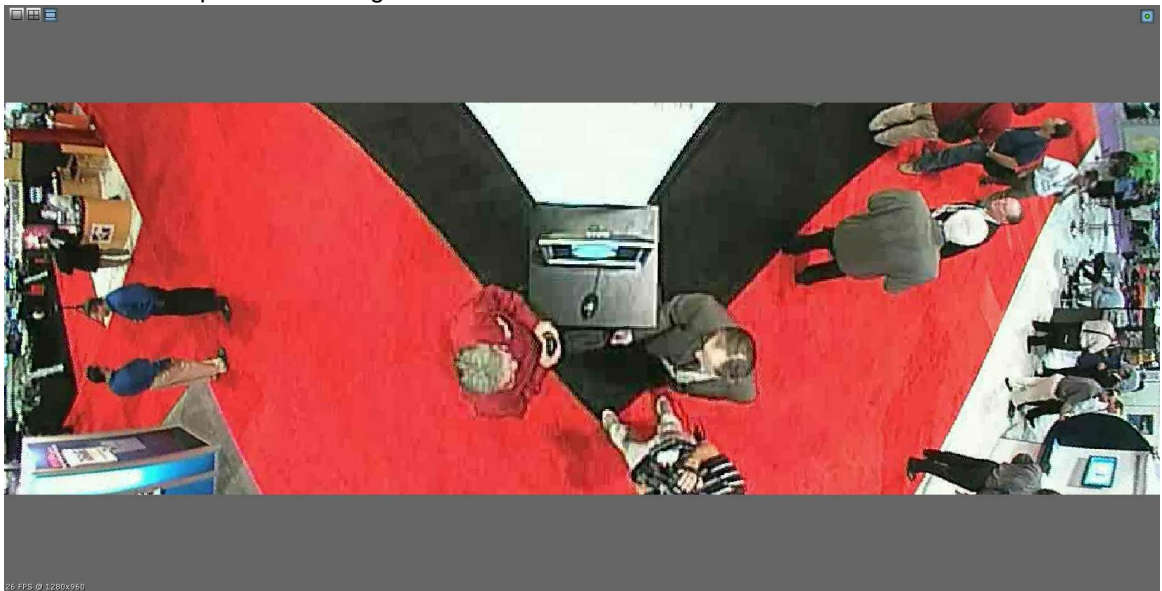
 Divides into 4 cameras without distortion as illustrated below:



To operate the PTZ in one of the divisions, simply click on the desired number represented by the icons:    



Generates a panoramic image as shown below



Enables or disables the controls. Upon disabling the document image is shown.

By disabling all controls the original image is shown as below.



4.2 How to configure the image filters

Image filters are configurations applied to the image of a camera aimed at highlighting colors and details of a scene for helping in its analysis.

To access this feature, click on the right button of the mouse over the image of some camera, thus showing a menu of special functions, and select the Image Filters option, as shown in the picture below.



- **Red:** Adjusts the level of the color red in the image.
- **Blue:** Adjusts the level of the color blue in the image.
- **Green:** Adjusts the level of the color green in the image.
- **Contrast:** Adjusts the level of contrast in the image.
- **Brightness:** Adjusts the level of brightness in the image.
- **Color level:** Adjusts the level of color in the image.
- **Zero button:** Returns the above mentioned values to their initial positions.
- **Preview button:** Opens the video of the camera with the applied configurations.
- **Emboss:** Leaves the image in gray tones to highlight relief.
- **Flip:** Inverts the image horizontally. Recommended when the camera is installed in an inverted position.
- **Flop:** Inverts the image vertically. Recommended when the camera is installed in an inverted position.
- **Grayscale:** Leaves the image in gray tones.
- **Blur:** Applies a blurring effect to the image. Adjust the intensity level of the filter using the slide bar alongside.
- **Gaussian Blur:** Applies a Gaussian blurring effect to the image. Adjust the intensity level of the filter using the slide bar alongside.
- **Sharpen:** Applies a border highlight effect to the image.
- **Deinterlacing:** The deinterlacing filter that smooths the images because of the movement are left with a lower quality. In the picture below has an example of deinterlacing.



OBS: Para conhecer as limitações desses recursos de sua versão do Digifort consulte a matriz de recursos em nosso site: <http://www.digifort.com.br/feature-matrix>

Chapter



5 Alarmes

As well as visually managing the cameras on the screen, the Surveillance Client also manages the alarms that are configured in the Administration Client.

When the alarms are set off these appear as pop-ups, as shown in the figure below:



This screen has the following functionalities:

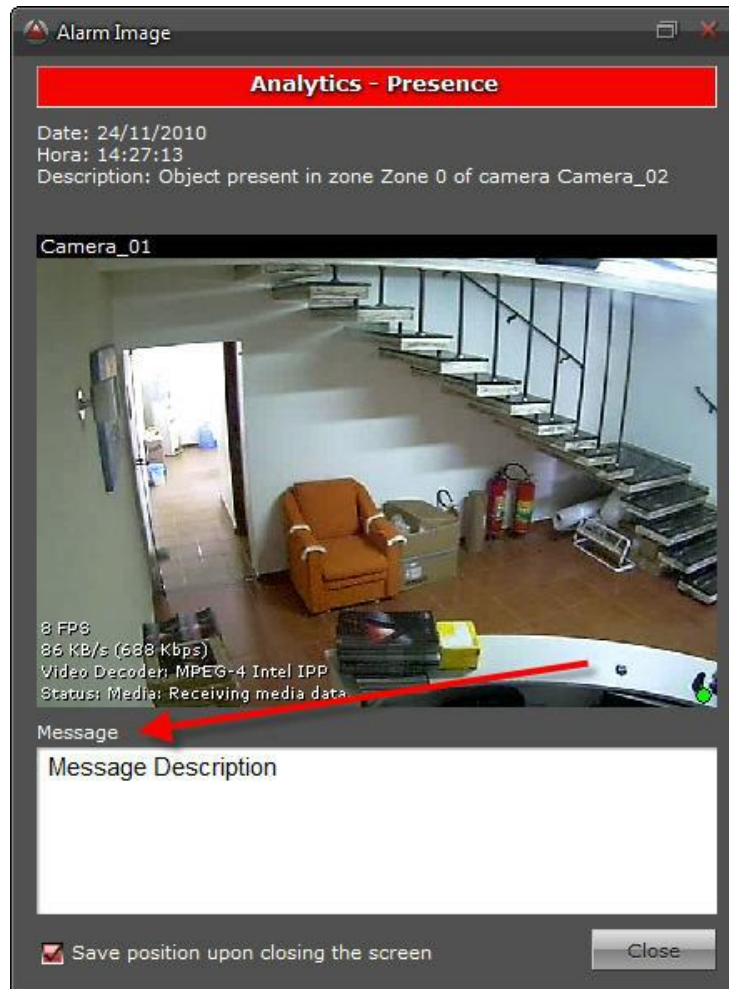
- Date: Date of the event.
- Time: Time when the event took place.
- Description: Description of the event.

Save position when switching off the screen: Saves the position on the screen where the pop-up is located so that the next pop-up opens in the same place.

The alarm pop-up may also include other functionalities configured in the Administration Client.

5.1 Message

A message that has been configured to complement the description for the alarm set off as shown in the picture below:



Chapter



VI

6 Video Playback

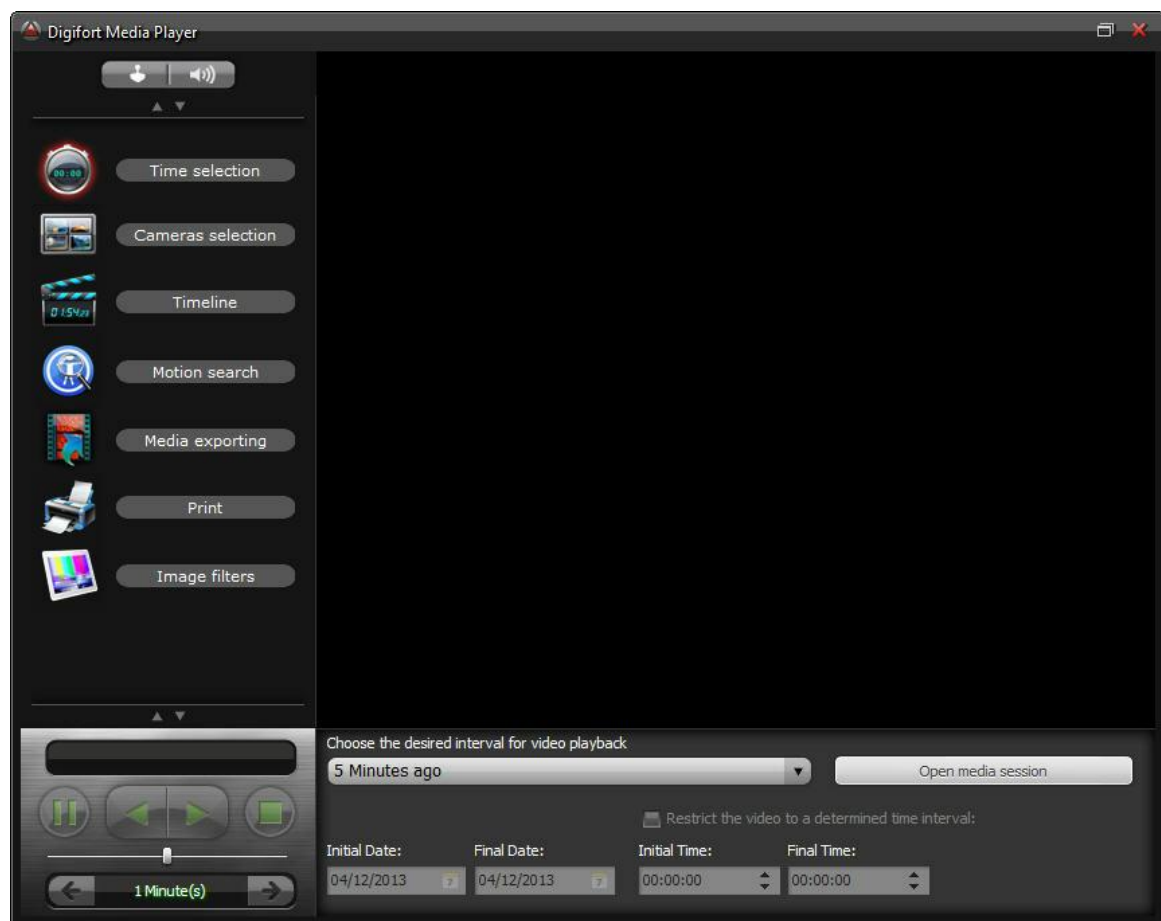
This chapter is dedicated to the playback of videos previously recorded by the Digifort Server.

The images recorded in the server are recovered by selecting the camera and by carrying out a date and time search. It is also possible to create a video only when there is movement in the selected image area. The user can zoom in or out of the scene viewed, and each with an independent movement regarding the main image. There is also a number of filters and tools for image treatment and video RGB control aimed at facilitating the location of details that may be difficult to see. The printing function prints a selected image and can include a description of the event in a comment field.

6.1 Playing videos back

Digifort offers the option of visualizing previously recorded videos. To do this, click on the Media Player Button. The following video playback screen will be opened up as shown in Figure below:

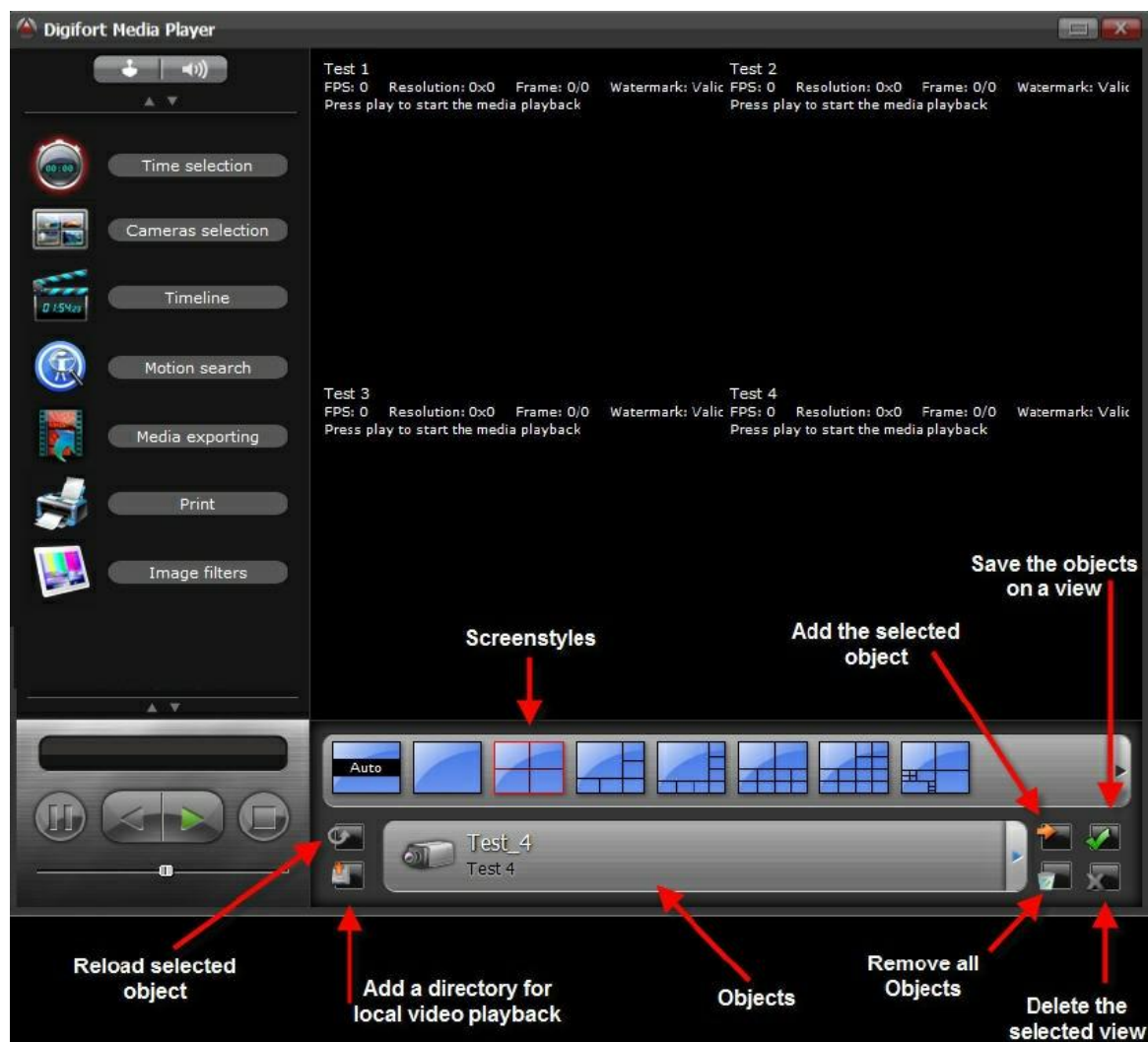




To play the video of one or more cameras back, choose the interval desired. To choose your own interval Personalized and fill in the date and time fields located below.

At the end of the adjustments, click on Open media session, opening the screen for Camera Configuration as shown in Figure 4.2.

If you want to view the exported video, select the option Playback local recordings and select the directory where the video is located. To learn how to use this feature see Executing Local Recording

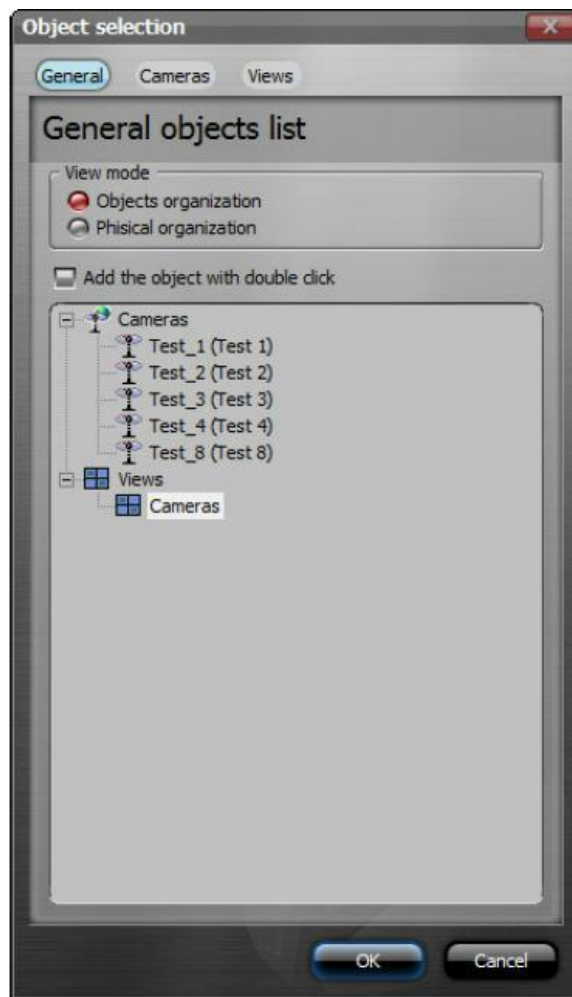


With the Camera Configuration screen open, first choose the screenstyle for viewing the recording.

Digifort allows simultaneous and synchronized viewing and exportation of video of various cameras. Because of this, the choice of the screenstyle becomes important for the viewing of the necessary cameras. To learn how to create your own screenstyles, consult the manual of the Digifort Administration Client.

After choosing the screenstyle, select the objects to be added. The following screen will be opened:

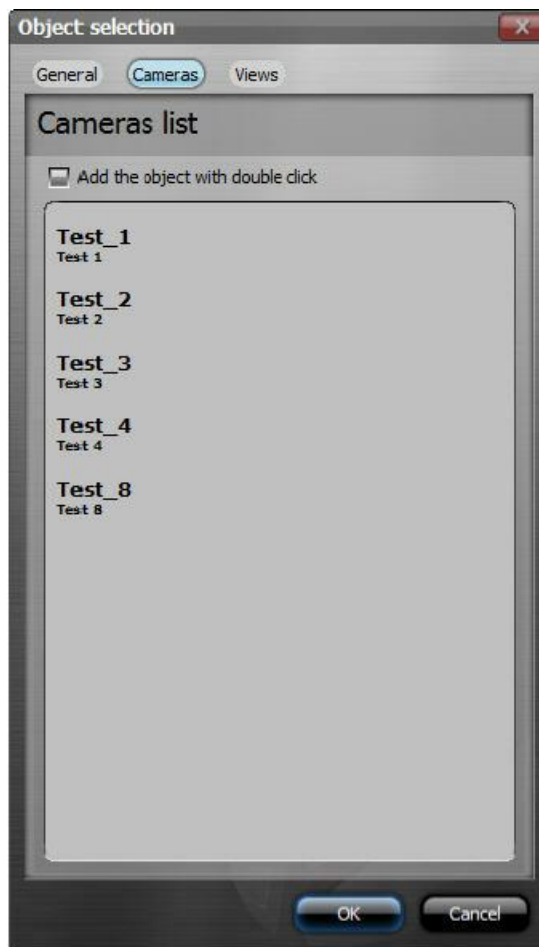
General: Allows viewing of all of the objects in the list.



This screen offers the following functions:

- **Organization by object:** Shows all of the objects in the list.
- **Physical Organization:** Shows all of the objects separated by server.
- **Add object with double-click:** Allows the objects to be added dynamically to the screenstyles with a double-click of the mouse.
- **List of objects:** Click on an object, if the Add objects with double-click option is disabled, soon after click on Add selected object.

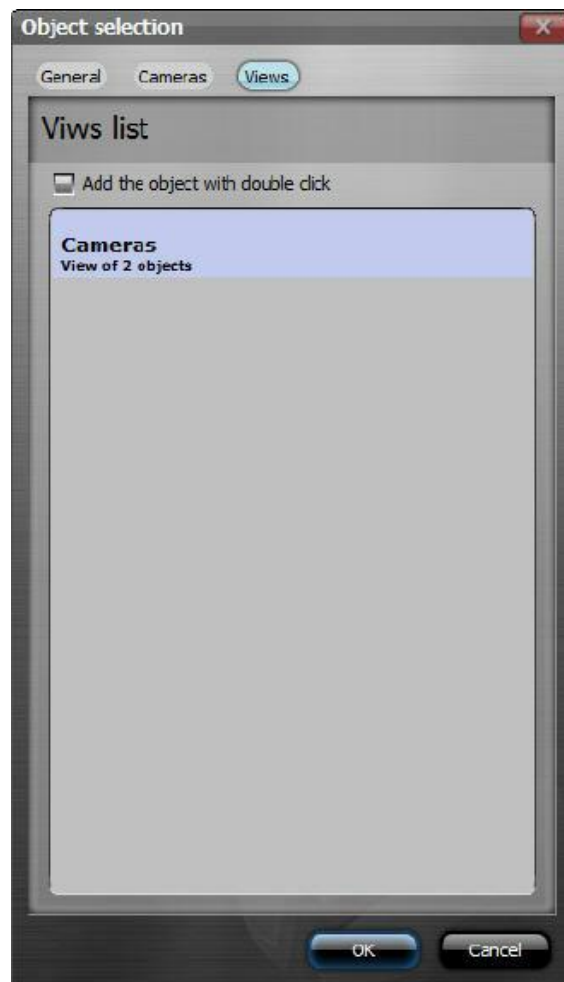
Cameras: Allows viewing of all of the cameras



This screen offers the following functions:

- **Add object with double-click:** Allows the objects to be added dynamically to the screenstyles with a double-click of the mouse.
- **List of cameras:** Click on a camera, if the Add objects with double-click option is disabled, soon after click on Add selected object.
- **Screenstyle:** Allows viewing of all screenstyles

Mosaicos: Permite a visualização de todos os mosaicos



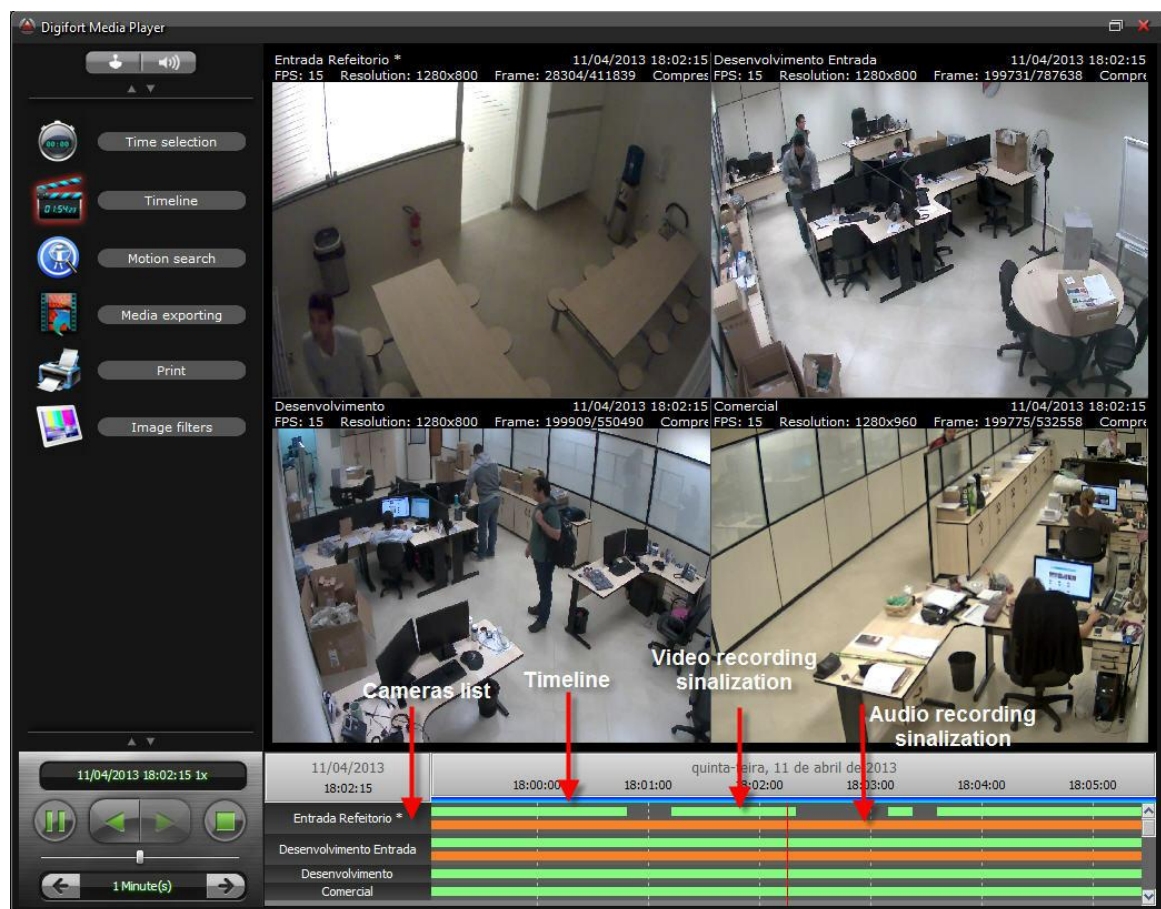
This screen offers the following functions:

- **Add object with double-click:** Allows the objects to be added dynamically to the screenstyles with a double-click of the mouse.
- **List of screenstyles:** Click on a screenstyle, if the Add objects with double-click option is disabled, soon after click on Add selected object



When all of the desired cameras are on the screen, click on Play

The time line screen will be opened as shown in Figure bellow.








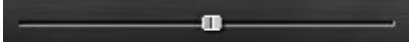

In this screen there will be the video control and the time line.

The Media Player offers the following functions:

- **Information about the video:** General information about the video, such as date, time, resolution, frames per second, video compression and the number of the current image.
- **Authentication watermark of the image:** When the image coming from the camera is recorded in disk, a security code is generated based on the image. If, for any reason, the image is modified, the authenticity code is broken, showing a crossed circle as watermark.
- **Video timeline:** Scroll bar with which it's possible to advance, rewind, and export the video.
- **Demarcações de Áudio:** A linha do tempo marca com retângulos laranjas onde houve gravação em cada câmera. O Áudio é reproduzido juntamente com o vídeo da câmera
- **Limitation of recording intervals:** The time line shows green rectangles to mark where each camera had recording. It is in this time interval that video for exportation must be selected.
- **Select the desired period with the right button:** With the right button it's possible to select the desired recording period for exportation. Simply click-and-drag and a blue bar will come up limiting the time line for exportation.

- **Zoom on the time line:** To analyze or select a more detailed time period it's possible to space the time line out for greater precision. Use the +-key to increase the spacing and the — key to decrease.

- **Tool bar:** The tool bar offers the following functions:

- o  Play video back in reverse
- o  Play video back.
- o  Pauses the video.
- o  Stops the video.
- o  Shows information about the date, time and playback speed.
- o  Video playback speed.
- o  Forwards the video every minute or every second. Just click on the arrows to move forward or backward.
- o To change the time, place your mouse over the description of the time and click and drag. By default, the component will be in minutes mode, to change for seconds let in 1 minute and then release the click and click again dragging left. After doing so, simply click and drag over the time period to select seconds. To switch back to the minutes, put in 1 minute and then release and click again and drag to the right.
- **Digital Zoom:** Is it possible the implementation of the Digital Zoom on the selected images to view the recording. Just add the cameras screen video playback and the right to select the desired area. In the lower right corner will show the location of the selected area. Selecting the camera is possible to print the image or save it in JPG format.

6.1.1 Playing audio back

The audio is recorded along with the video camera is enabled. To choose the camera you want to hear just select it in the mosaic reproduction or click the audio option as shown in the figure below:



This control you can select the camera, activate the mute option and view the volume of the

recorded audio.

6.1.2 PTZ on playback

You can use PTZ controls in the recording. To open the control just click the joystick option as shown below:



- **Camera with standard lens:** The PTZ will be used in Digital Zoom mode.
- **Camera with Panamorph lenses:** The options presented in the chapter [Working with panamorphic lenses](#) ³⁷ will be available on the screen.

6.2 Playing Exported Videos Back

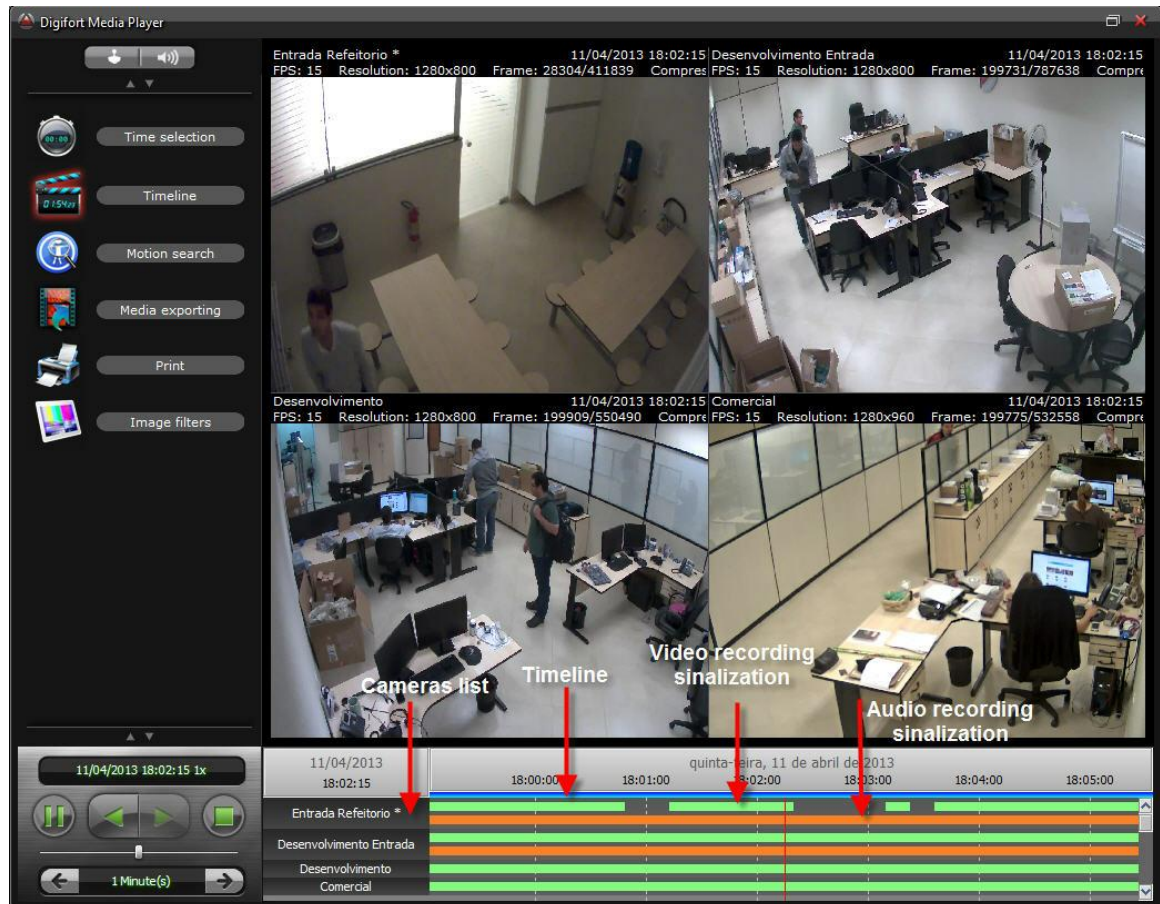
After exportation of the video in “Digifort” format, enter the exportation directory and find the icon “Player.exe”.

This is the player of exported videos:



When the exportation was created, some information such as the person responsible for the exportation and his description was lost, these descriptions can be viewed in this first screen as shown in Figure 4.23.

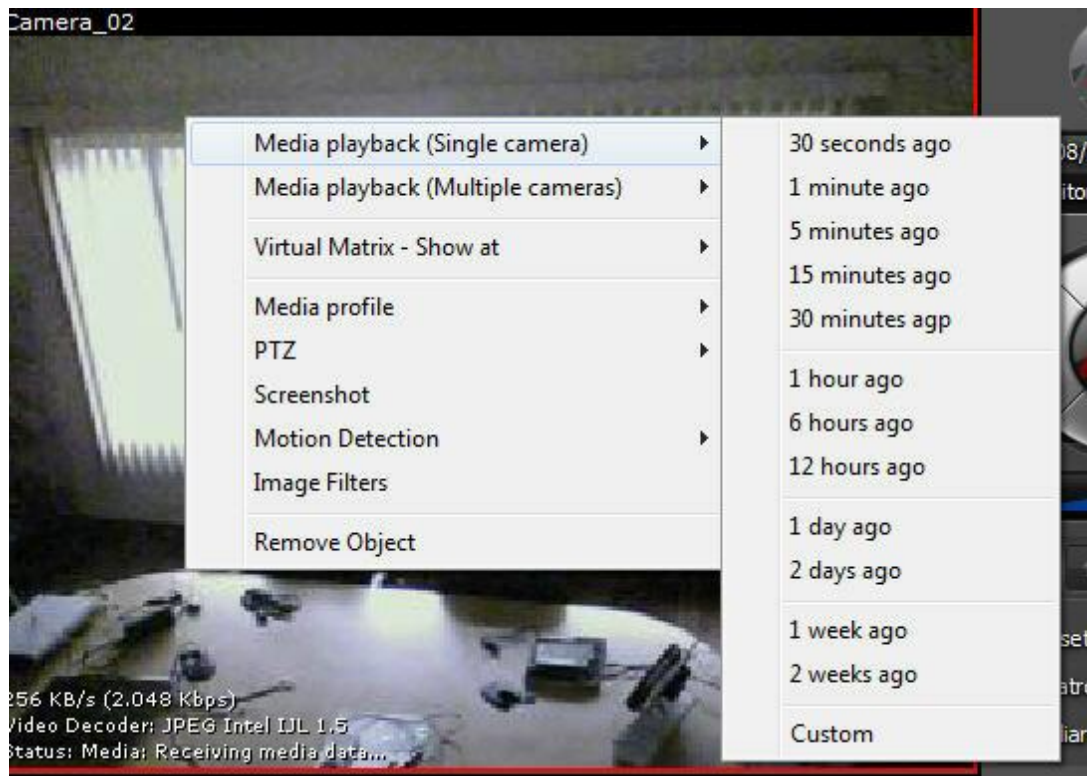
Simply click on Start and the video player will be executed with all of the functions presented on [Video Playback](#) ⁴⁶, as shown in Figure below.



6.3 Quick video playback

With usability in mind, Digifort can also quickly play back recorded videos.

On the Surveillance Client's main screen click on the image of a camera with the right-hand button of the mouse as shown in the picture below:



There will be two playback options available:

- **Media playback (single camera):** This option plays back the video of the cameras in the screen style. Once this has been selected, the time line screen will show up as in the chapter [Video Playback](#)^[46];
- **Media playback (multiple cameras):** This option plays back the video of the selected camera. Once this has been selected, the time line screen will show up as in the chapter [Video Playback](#)^[46];

Note

The option for fast video reproduction can be accessed by clicking with the right-hand button of the mouse on the object in the list (cameras or set of views)

Chapter



VII

7 PTZ

The Surveillance Client allows the user to control movable cameras via the PTZ feature.

Digifort offers four types of camera movement control: movement via the screen's basic and advanced controls, via table joystick, visual joystick and by click-and-center.

To move a camera, first you have to select it by clicking on the chosen camera twice creating a red strip on its upper part.

The following topics explain how the four types of camera movement work.

7.1 Movement by screen controls

Digifort offers all of the basic tools for moving a camera via screen controls. To access this feature, locate the PTZ controls in the main screen of the Surveillance Client, as shown in the picture below. These controls will only be available if a camera with PTZ support is selected.



Up, down, left, and right arrows: Move the selected camera in the clicked direction.



Central button: Activates the movement by click-and-center.



Mais zoom e menos zoom: Increases or diminishes the zoom of the selected camera.



Sensitivity bar: This bar defines the speed at which the camera will move when executing a PTZ function. Digifort always keep the last position used by the user.

7.2 Movement by Click-and-Center

This feature makes it possible for the user to click on some point of the image in which he wants to center the image.

When clicking on the camera image, the camera will move positioning itself in such a way as to center on the clicked point.

To access this feature, select the desired camera, double-click in the image, and then click on the central button of the screen's PTZ control, as explained in the previous topic.

7.3 Movement via the Digital PTZ

The Digital PTZ was created so that it is possible to move more dynamically in fixed cameras. The Digital PTZ means a fixed camera can simulate features such as Pan, Tilt and Zoom.

In a fixed camera, the icon indicated in the picture below shows that the feature is active:



To start using the digital PTZ in a fixed camera, first start by zooming a chosen area. To Zoom, use the mouse wheel or the zoom button on the PTZ control.

When zooming, there will be a square with the whole image of the camera and a red square showing the area in the image where the zoom is working. See the picture below:



Once the zoom has started, all the Pan and Tilt options will be enabled. The Virtual Joystick can also be used with the Digital PTZ.

Another way to move the Digital Zoom is by clicking and dragging the red square (zoom area) shown in the picture above.

Chapter

VIII

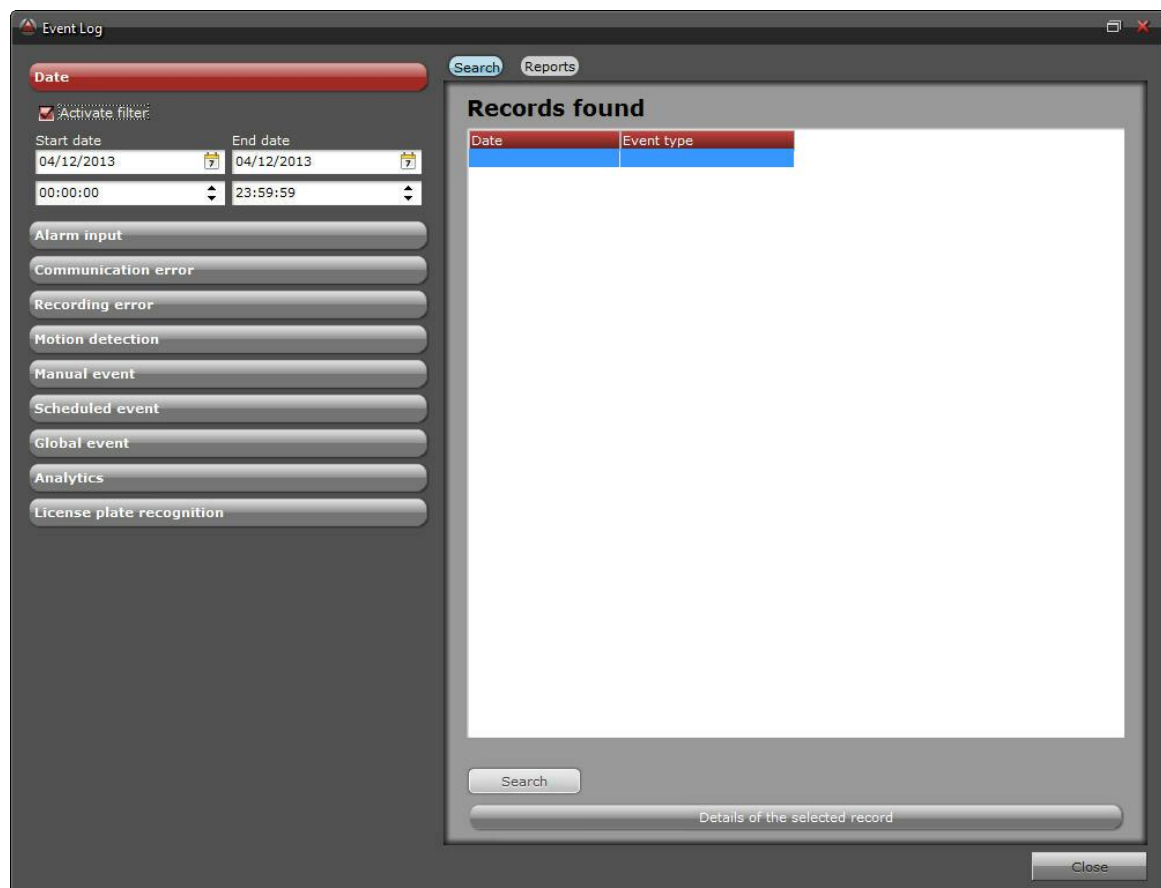
8 Event Log

Digifort's events log means that any event in the system can be rapidly found, visualized and used as data to recover a recording.

To open the events screen, click on the **Event log** button as shown in the picture below:



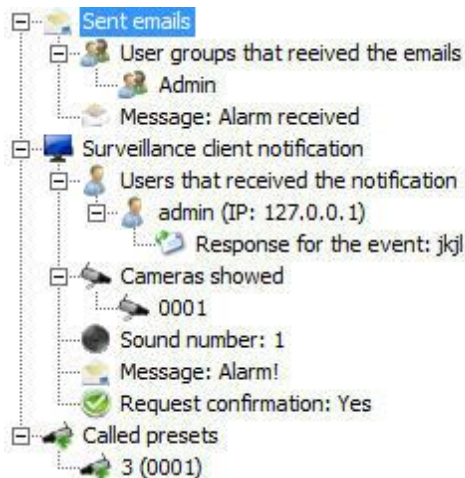
The following screen will come up:



Date	Event type
------	------------

8.1 Record detail

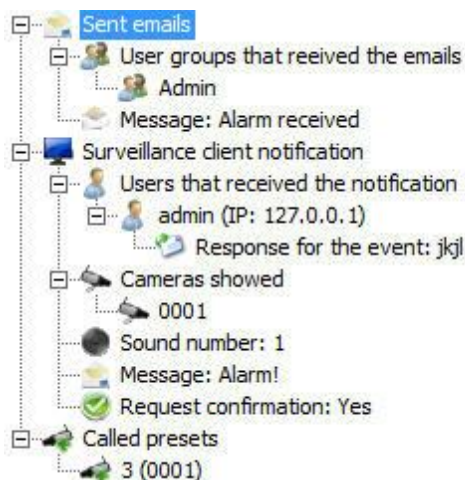
All the registered logs include an option to view details, as shown below:



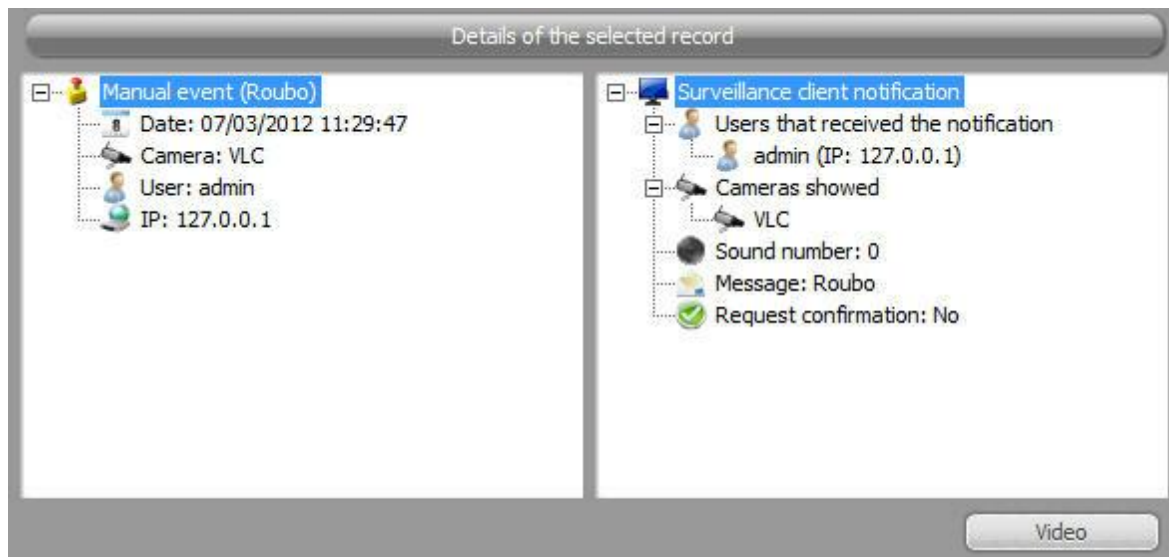
Those details show important information.

In the left-hand corner of the details you can find information pertaining to the event itself, such as for example: In the events where cameras are involved, the name of the camera and other related information such as date and time of the event are shown.

The right-hand square shows information relating to the alarms set off because of the event. Such as, for example: e-mails sent, cameras shown in the pop-up screen, messages sent, operators' response to an alarm, etc. The picture below shows a sequence of events:



In the lower right corner can still be triggered the video button. When you click, it will open the media player with the video of the time at which the event occurred, and associated with the cameras in alarm actions. To learn about alarm actions, consult our Administration client Digifort.



8.2 Filters

The events logs allow filters to be used for a quick and better search of events.
All types of available filters are listed below.

8.2.1 Filter per date

The filter per date allows records to be searched only according to the date selected.
The date configurations can be made in the tab below:

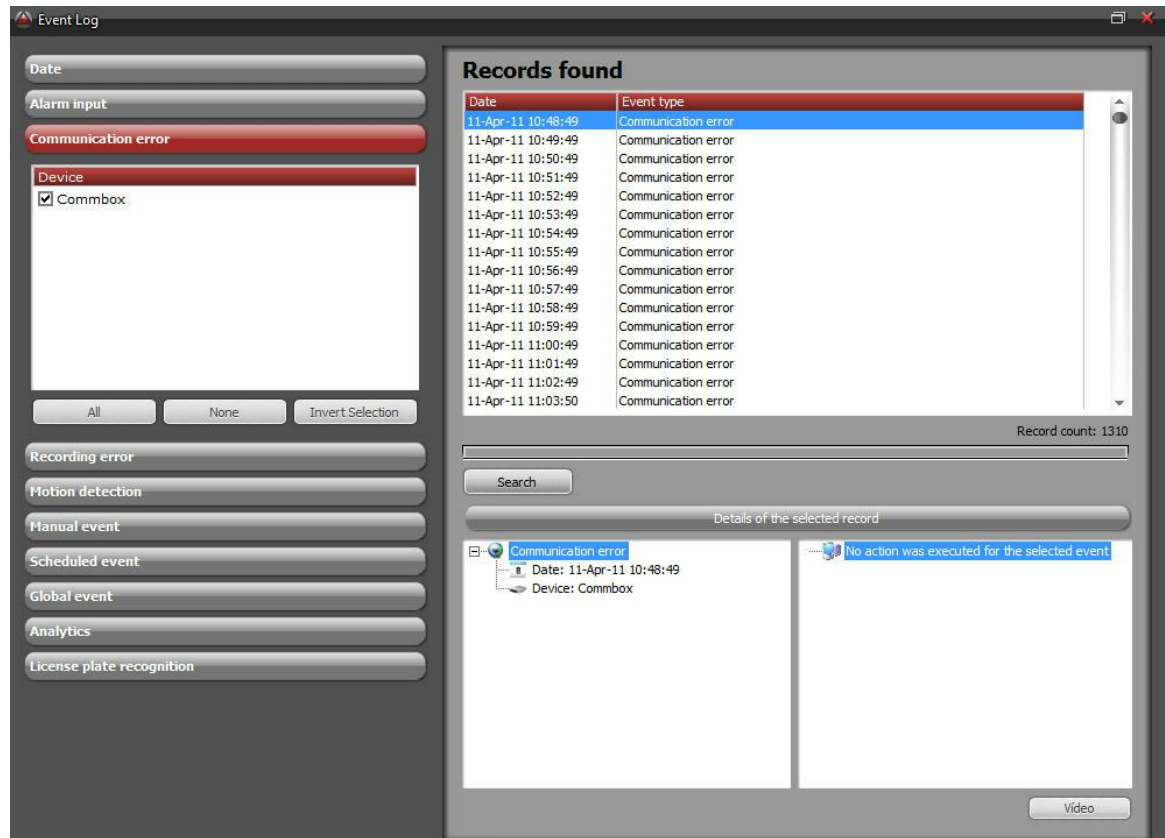
☒ Activate filter:

Start date	End date
01-04-2011	30-04-2011
00:00:00	23:59:59

8.2.2 Filter per communication errors

The Filter per alarm communication errors searches all the lapses in communication generated by equipment registered with Digifort.

The picture below shows a search example:

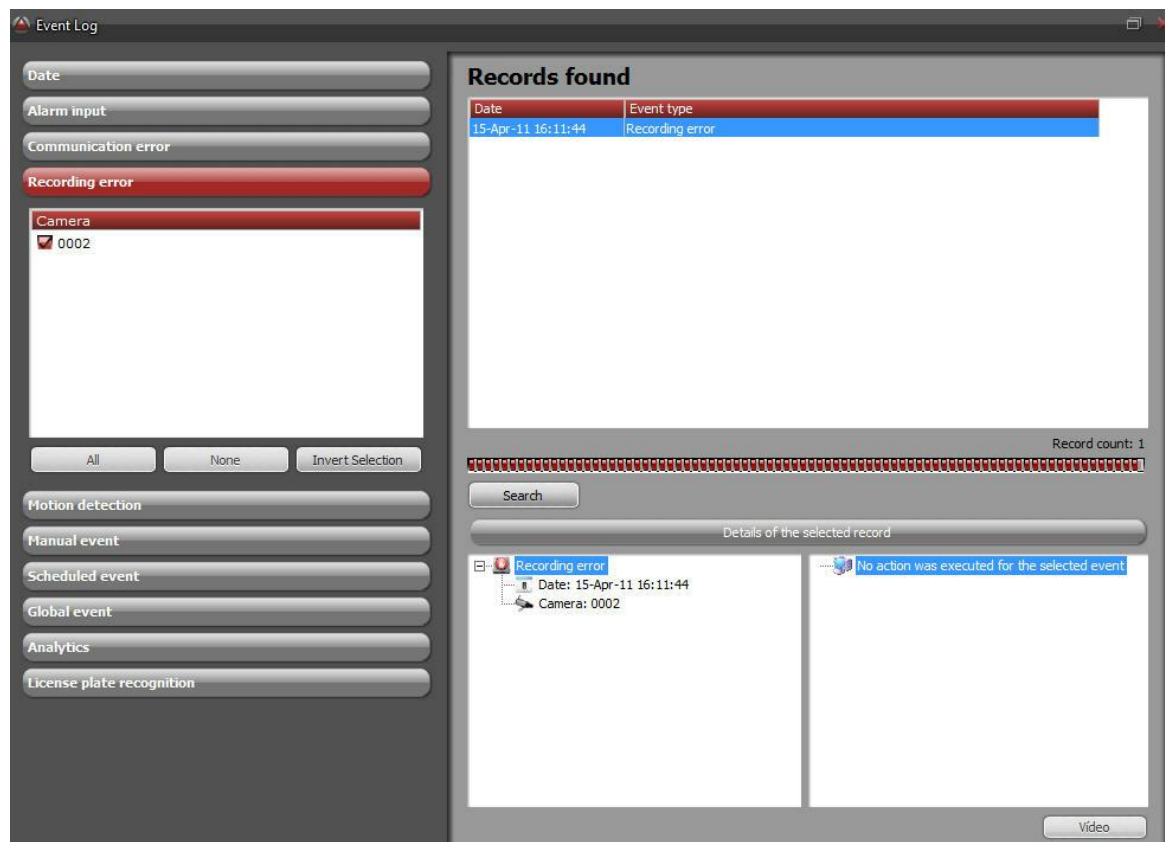


In the left-hand corner of the **Device** tab you have to select one or more devices and click on **Search** to see the logs.

8.2.3 Filter per recording errors

The Filter per recording errors searches all the lapses in recording generated by equipment registered with Digifort.

The picture below shows a search example:



In the left-hand corner of the **Device** tab you have to select one or more devices and click on **Search** to see the logs.

Chapter



IX

9 Interface Web

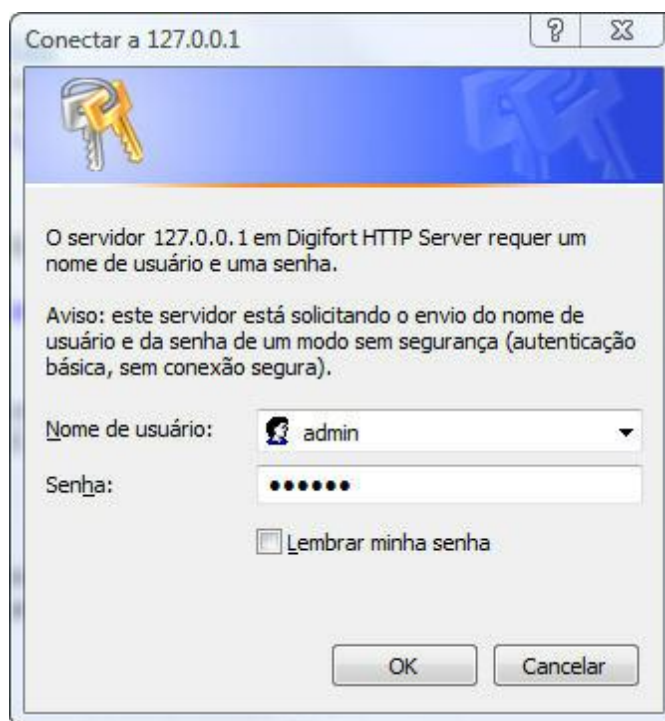
Digifort is equipped with a Web Server that makes it possible to monitor the server's cameras by way of an Internet navigator.

The access to the server via Web works in a similar way to the Surveillance Client, but does not have some functions such as view creation.

By web access it's possible to monitor and play back videos of any camera to which the user has the right.

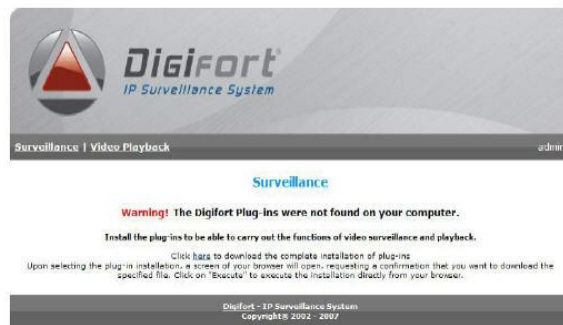
9.1 How to access the Web Server

To access the Web Server of Digifort, open your Internet navigator and in the address field, enter the IP address or DNS of the server that you want to access, opening the authentication screen, as shown in the picture below.



In this screen, enter your user name and password as defined by the administrator in the Administration Client.

If this is your first access, a screen will be displayed for the installation of the plug-ins of surveillance and video playback, as shown in the picture below.



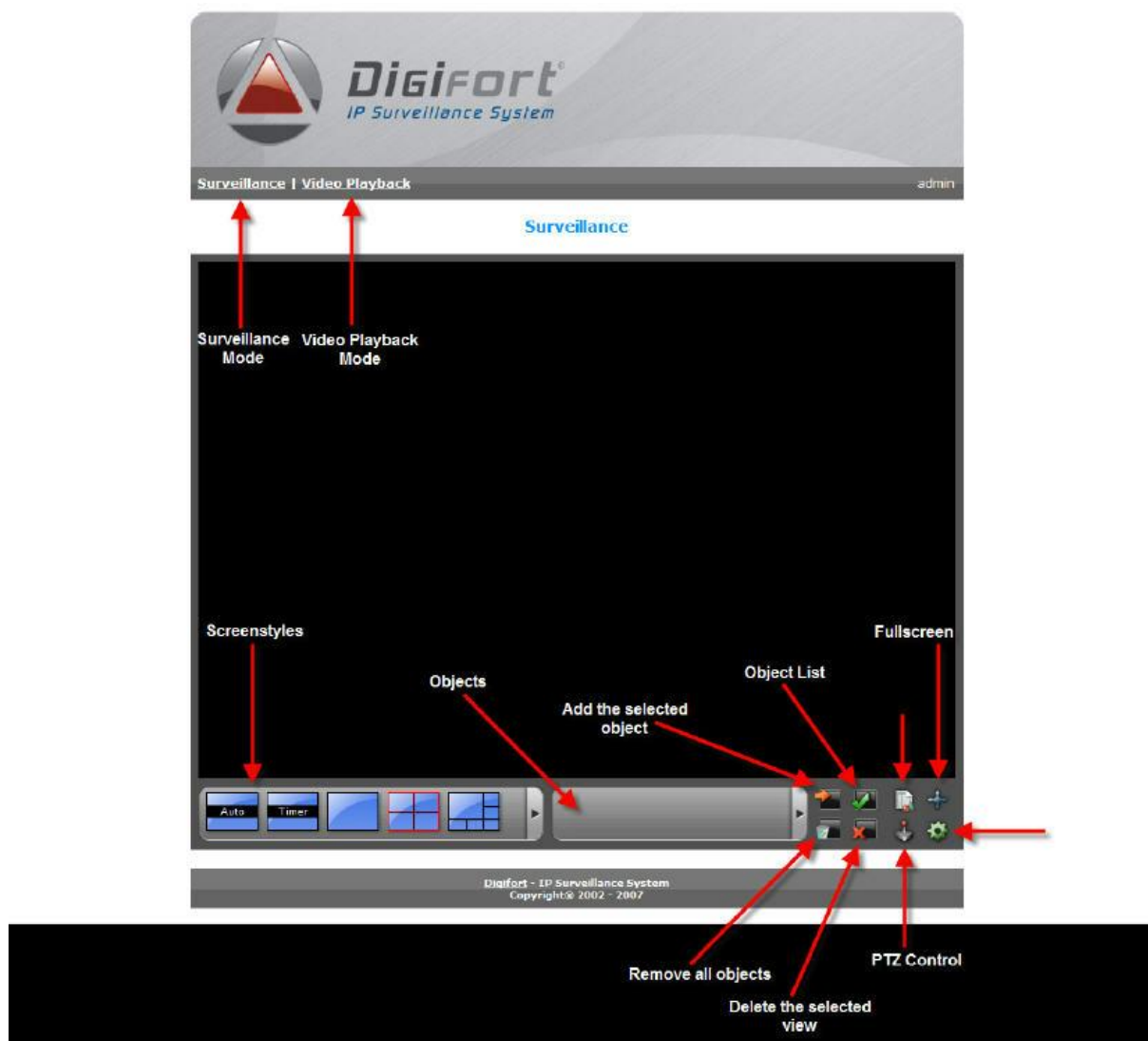
In this screen, there are three installation links. Install the most convenient package:

- Click here to download the complete installation of the plug-ins: Install the plug-ins of surveillance and video playback.
- Click here to download only the installation of the plug-in of surveillance: Installs only the plug-ins of surveillance. It will not be possible to play recorded videos back.
- Click here to download only the installation of the plug-in of video playback: Installs only the plug-ins of video playback. It will not be possible to monitor the cameras live.

After selection of the desired plug-in option, a screen of your navigator will open, requesting a confirmation that you wish to download the specified file. Click on "EXECUTE" to execute the installation directly from your browser.

9.2 Monitoring via web access

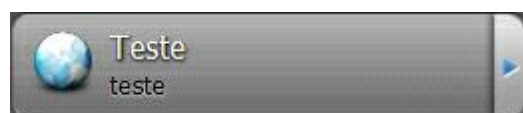
After installing the surveillance plug-ins, as explained in the previous topic, click on Surveillance, located in the gray strip, under the Digifort logo.



The surveillance web interface of Digifort offers the following functions:



Screenstyles: Digifort Standard comes with eight screenstyles.



Objects Selection Screen: Open the screen with all of the objects in the system.

9.3 Playing videos back via web access

After installation of the video playback plug-ins, as explained in the previous topic, click on Video Playback, located in the gray field, under the Digifort logo and right afterwards on Start to open the video playback screen.



The functioning of the video player is identical to the video player of the Surveillance Client, explained on [Video Playback](#) ⁴⁶.

