

Digifort Release Notes

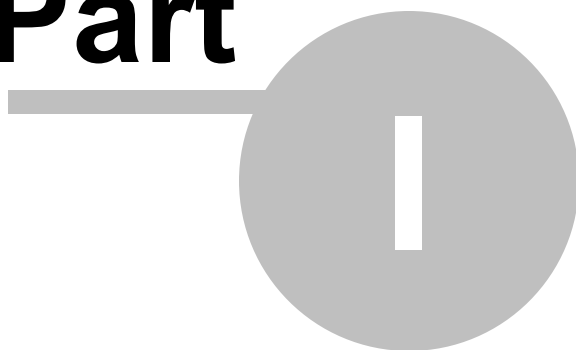
Version 6.7.1.1

Index

Part I Description	5
Part II Version 6.7.1.1	7
1 Improvements.....	7
Improved communication protocol	7
Multi-thread for PTZ	7
Multi-thread for Relay	7
Virtual matrix performance	7
Object update notification performance	7
2 Fixes	7
Part III Prior versions	10
1 Version 6.7.1.0	10
Improvements	10
Possibility to use over 2GB of memory.....	10
New JPEG encoder	10
New JPEG decoder	10
New image resizer	10
Camera shortcut of Digifort DGF-KB1000 keyboard	10
Single login for all servers	10
Disk limit calculation speed	10
Object updates improvement.....	11
Improved media exporting speed.....	11
Better memory management of video encoding for mobile devices	11
Bilinear resizing in media playback.....	11
Virtual keyboard in login screen.....	11
New supported devices	11
Media devices.....	11
Fixes	16
2 Version 6.7.0.0	17
New features	17
Audio	17
360 lens support.....	19
RTSP Media server	21
Database maintenance.....	21
Attach camera image on events.....	22
Change recording media profile on motion	23
PTZ Log	24
LPR	25
Surrounding cameras on LPR.....	25
Re-trigger repeated license plates	26
Reports	27
Change report logo.....	27
Exporting in different formats.....	28
Activate analytics by presets.....	28
Video playback.....	29

Jump time in playback.....	29
Resizing exported video.....	30
Individual PTZ control rights.....	30
Improvements	31
New camera registration screen.....	31
Button to open camera browser	31
User rights on cameras	32
Connection unification	33
User connection status	33
Automatic user disconnection.....	33
Player copying message	33
Deactivated cameras on status.....	33
Video playback.....	34
Performance improvement.....	34
Time selection	34
Timeline improvements.....	34
System resources	35
TCP Communication	35
Date and time on operator answers to events.....	35
Exit from full screen with mouse.....	35
Database backup.....	36
New supported devices	36
Media devices.....	36
Alarm devices.....	48
Fixes	48
Index	0

Part

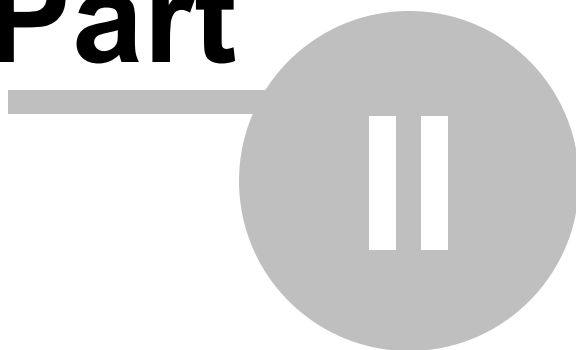


1 Description



This file contains the history of all changes made to the system. Changes here shown are valid for the Enterprise edition that has all the features. Professional, Standard and Explorer editions may not have certain items described in this file.

Part



2 Version 6.7.1.1

Release date: 01/07/2014

2.1 Improvements

This section explains the improvements made to existing features

2.1.1 Improved communication protocol

The performance of the communication protocol between Digifort server and its clients has been improved. A new caching system has been implemented to prevent commands that need to be sent repeatedly from using a lot of CPU in the packing / unpacking process.

2.1.2 Multi-thread for PTZ

The PTZ Control subsystem has been enhanced to better utilize the parallelism feature of modern CPUs. This improvement will release a big load from the system core and PTZ commands will be sent faster (For systems with many PTZ cameras).

2.1.3 Multi-thread for Relay

The relay subsystem (The server receives media from cameras and send to clients) has been enhanced to better utilize the parallelism technology of modern CPUs. This change will release a big load from the system core and the performance and fluidity of the relay system should increase significantly for systems with many cameras and many users.

2.1.4 Virtual matrix performance

Through a new caching system, the performance of object update notification from virtual matrix has been enhanced for systems with multiple servers and multiple monitors.

2.1.5 Object update notification performance

Through a new caching system, the performance of the subsystem of object update notification (Whenever an object is updated through the administration client, the surveillance client is automatically updated without the need to reconnect to the server) was improved significantly when many objects are updated simultaneously (For example, when all the cameras are activated).

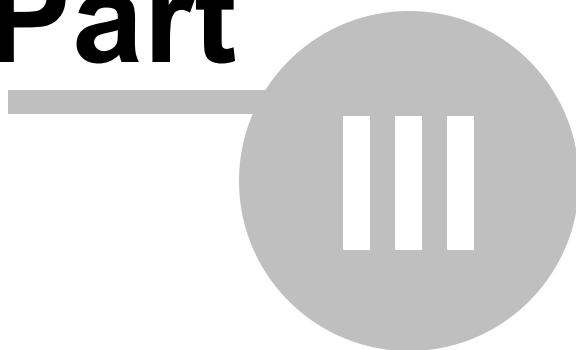
2.2 Fixes

- Fixed a problem with communication drivers of some D -Link cameras that could generate a buffer overflow on the server
- Fixed an issue in the ONVIF PTZ driver that precluded controlling PTZ cameras using video servers with over 1 channel
- Fixed an issue that could cause the malfunction of the server when accessed through mobile devices (Digifort Mobile Client)
- Fixed a problem in surveillance client with the keyboard controller DGF-KB1000. On multi-monitor systems, when one or more monitors are minimized and the user changes the selected object using the keyboard controller, he may have the feeling that the controller crashed
- Fixed a problem with the drivers Flexwatch communication equipment which could cause internal

server errors

- Fixed a problem with RTSP Digest authentication, where after a successful connection the camera stopped working, the driver can no longer authenticate to reestablish the connection
- Fixed a problem in surveillance client in multi-server environments where the user is viewing an object from a server and the server was disconnected, the system would display the next object, however, when the system established the connection again, the previous object was no longer displayed automatically

Part



3 Prior versions

This section has a history of changes from previous versions, from version 6.7.0.0

3.1 Version 6.7.1.0

Release date: 08/14/2013

3.1.1 Improvements

This section explains the improvements made to existing features

3.1.1.1 Possibility to use over 2GB of memory

The Digifort system is a 32bit software and it is limited to use only up to 2GB of memory. In some systems, 2GB of memory is too little and can cause problems on the recording server, due to this it was added an improvement that tells the operating system to allow the allocation of more memory to the system, and now the limitation of memory is up to 3.5GB in 64bit operating systems and up to 2.5GB in 32bit operating systems.

A 64bit version of Digifort is already under development and should be released soon.

3.1.1.2 New JPEG encoder

A new JPEG encoder was added to be used by mobile applications (iPhone, Android and Digifort Mobile). This new encoder has a much better performance compared to the old one, so the encoding performance for mobile applications is drastically improved, reducing the CPU usage from the server.

3.1.1.3 New JPEG decoder

A new JPEG decoder was added to the system, ensuring even more performance for JPEG image decoding.

3.1.1.4 New image resizer

The image resizer plays a very important role in the live viewing and playback of images, it is responsible for rescaling the images before display. The new image resizer has a much better performance, which will allow for the reduction of CPU usage when displaying video, especially when "Bilinear resizing" is activated.

3.1.1.5 Camera shortcut of Digifort DGF-KB1000 keyboard

The camera shortcut size in DGF-KB1000 keyboard was raised from 5 to 10 characters.

3.1.1.6 Single login for all servers

The login process in surveillance client was modified to ensure better login experience in systems with many registered servers. Now, instead of opening an individual login screen for each server simultaneously, only one screen will be displayed and the provided credentials will be used in all servers. If the login fails in one server, a new login screen will be opened and new credentials will be requested and used to connect to the remaining servers.

3.1.1.7 Disk limit calculation speed

The camera disk limit calculation could be long in systems with many cameras and large volume of recordings. Although the calculation is an automatic and independent task, it could consume a lot of CPU, causing a degradation of server performance. The calculation process has been greatly improved

and will no longer use extra CPU resources.

3.1.1.8 Object updates improvement

Whenever a change is made to objects (Cameras, maps, analytics...) through the administration client, they are instantly sent to all connected clients. In systems with many cameras and many clients, the update process of the objects was using too much server resources, which caused a small system hang. With the new improvements, the system performance will not be degraded even in environments with many users and cameras.

3.1.1.9 Improved media exporting speed

The media exporting speed from surveillance client was highly improved, even in large amounts of video to export, the system will no longer lose the export performance over time.

3.1.1.10 Better memory management of video encoding for mobile devices

The memory management of video encoding for mobile devices (iPhone and Android) has been improved, so after use, the memory will be freed to save system resources. Previously, after the memory was allocated by the decoder, it was not being released, only when the camera was activated again through the administration client.

With this improvement, it was also fixed a problem where old images could still be sent to the mobile device in a new connection.

3.1.1.11 Bilinear resizing in media playback

With the new image resizing engine, it is now possible to use bilinear resizing in media playback to ensure better image quality.

Bilinear resizing will be activated if the option is selected in surveillance client settings.

3.1.1.12 Virtual keyboard in login screen

The virtual keyboard in surveillance client will now be able to be switched directly from login screen. A new icon was added to the bottom-left corner.

3.1.2 New supported devices

3.1.2.1 Media devices

ACTi D61
ACTi D64
ACTi E13
ACTi E34
ACTi E84
AirCam BU-720
AirCam DM-720
Alpha-Digi ADIP-428
Arecont AV12186DN
Arecont AV20185DN
Arecont AV2455DN
Arecont AV3146DN
AVTech AVM265ZN
AVTech AVM302A

AVTech AVM311
AVTech AVM317Z
AVTech AVM328B
AVTech AVM357A
AVTech AVM500
AVTech AVM504
AVTech AVM521
AVTech AVM542
AVTech AVM552
AVTech AVM561
AVTech AVN216Z
AVTech AVN701EZ
Axis M2014-E
Camtron CMNH-135
Comtex EDH-02H
Digimerge DNB14TL2
Digimerge DND13TL2
Digimerge DNV14TL2
Dynacolor W3
Flir DNB14TL2
Flir DND13TL2
Flir DNV14TL2
Foscam FI8620
Foscam FI8906W
Foscam FI9821W
GeoVision GV-BL1200
GeoVision GV-BL120D
GeoVision GV-BL1210
GeoVision GV-BL1300
GeoVision GV-BL130D
GeoVision GV-BL220D
GeoVision GV-BL2400
GeoVision GV-BL2410
GeoVision GV-BL320D
GeoVision GV-BL3400
GeoVision GV-BL3410
GeoVision GV-BL5310
GeoVision GV-BX1200
GeoVision GV-BX120D
GeoVision GV-BX120DE
GeoVision GV-BX1300
GeoVision GV-BX130D
GeoVision GV-BX220D
GeoVision GV-BX220DE
GeoVision GV-BX2400
GeoVision GV-BX2400E
GeoVision GV-BX320D
GeoVision GV-BX320DE
GeoVision GV-BX3400
GeoVision GV-BX3400E
GeoVision GV-BX520D
GeoVision GV-BX520DE
GeoVision GV-BX5300

GeoVision GV-BX5300E
GeoVision GV-CA120
GeoVision GV-CA220
GeoVision GV-CAW120
GeoVision GV-CAW220
GeoVision GV-CB220
GeoVision GV-CBW120
GeoVision GV-CBW220
GeoVision GV-FD1200
GeoVision GV-FD120D
GeoVision GV-FD1210
GeoVision GV-FD220D
GeoVision GV-FD2400
GeoVision GV-FD2410
GeoVision GV-FD320D
GeoVision GV-FD3400
GeoVision GV-FD3410
GeoVision GV-FD5300
GeoVision GV-MDR120
GeoVision GV-MDR220
GeoVision GV-MDR320
GeoVision GV-MDR520
GeoVision GV-MFD120
GeoVision GV-MFD130
GeoVision GV-MFD220
GeoVision GV-MFD320
GeoVision GV-MFD520
GeoVision GV-UBL1211
GeoVision GV-UBL1301
GeoVision GV-UBL2401
GeoVision GV-UBL2411
GeoVision GV-UBL3401
GeoVision GV-UBL3411
GeoVision GV-UBX1301
GeoVision GV-UBX2301
GeoVision GV-UBX3301
GeoVision GV-VD120D
GeoVision GV-VD220D
GeoVision GV-VD320D
Giga Serie IP1000
Giga Serie IP5000
HDL DVR-HM T16
HDL DVR-HM T4
HDL DVR-HM T8
HDL DVR-HM TD16
HDL DVR-HM TD16P
HDL DVR-HM TD8
Hikvision DS-2DF1713B
Hikvision DS-2DF5274A
Intelbras VD 3016
Karbontech KT-IPB2W15
Karbontech KT-IPD01W1
Karbontech KT-IPD02W1

Karbontech KT-IPDO2WDR
LuxVision LV-7204D
LuxVision LV-7208D
LuxVision LV-7216D
Merit Lilin CS-CMIP042X
Merit Lilin IPD112ESX
Merit Lilin IPD2122S
Merit Lilin IPD2220ES
Merit Lilin IPD6122
Merit Lilin IPG1022ES
Merit Lilin IPR320ES
Merit Lilin IPR722ES
Merit Lilin IPR7334/8SX
Merit Lilin IPR7424/8ESX
Merit Lilin IPS025
Merit Lilin IPS622
Merit Lilin IPS722
Merit Lilin IPS836
Merit Lilin IPS936
Merit Lilin LR7022
Messoa NCB858HN5
Messoa NDF821PRO-HN5
NEOip AN-AVM311
NEOip AN-AVM328Z
NEOip AN-AVM359
NEOip AN-AVM521
NEOip AN-AVM542
NEOip AN-AVM552
NetVigi 2M-PIR-IP
NetVigi IP-IRD-100-1.3M
NetVigi NV-SD-IP-PXXX
Newello NW-TA-5704
OnElectronics CSD-13MP 22X
Panasonic BL-VP104WBR
Panasonic WV-SW598
Pelco Spectra S5220-EG0
Planet ICA-HM132
Samsung SNB-5004N
Samsung SND-5084
Samsung SND-6084RP
Samsung SNO-6011R
Samsung SNO-6084RN
Samsung SNP-6200RH
Samsung SNP-6201H
Samsung SNV-6084RN
Siera IPS 8130
Siera IPS 8713HD
Siera IPS 8720HD 2MP
Siera IPS 8720HD 3MP
Siera IPS 8723
Siera IPS 8736
Siera IPS 8835HD
Sony SNC-DH110

Sony SNC-EB520
Sony SNC-EM600
Sony SNC-EM601
Sony SNC-EM630
Sony SNC-EM631
Sony SNC-ER520
Sony SNC-ER550
Sony SNC-ER585
Sony SNC-ER585H
Sony SNC-VB600
Sony SNC-VB630
Sony SNC-VM600
Sony SNC-VM630
Sony SNC-ZB550
Sony SNC-ZM550
Sony SNC-ZP550
Sony SNC-ZR550
Suatech SUAIP 18000
Suatech SUAIP-B2000
Suatech SUAIP-D2000
Surveon CAM6351
TecVoz IPIR-PTZ36N
UDP IPX4602HD
Venetian VNT-4816
Venetian VNT-7004
Venetian VNT-7008
Venetian VNT-7016
Venetian VNT-7024
Venetian VNT-7032
Venetian VNT-7704
Venetian VNT-7708
Venetian VNT-9504
Venetian VNT-9508
Venetian VNT-9516
Via Real NNF-811H DU-7-B
Via Real NNF-813HD-7-B
Via Real NNF-8313ACHDDM-7-B
Via Real NNF-8315ACHDD-7-B
Via Real NNH-8312CHDDVX-7-B
VISIONxIP AP-3080P-5-60-80M
VISIONxIP BU-3020P-5-60-30M
Vivotek FD8151
Vivotek FE8171
Wision WS-A8R31-P
XTS PT720PIR4.3
Yudor HX22P-360
ZKTeco ZKIP350
ZKTeco ZKIP370
ZKTeco ZKIP472
ZKTeco ZKIR352
ZKTeco ZKIR353
ZKTeco ZKIR372
ZKTeco ZKIR373

ZKTeco ZKMD352
ZKTeco ZKMD372
ZKTeco ZKMD450

3.1.3 Fixes

- Fixed a problem when printing LPR record which could fail if the user selects "Surrounding camera images" with no associated surrounding camera.
- When downloading the list of camera presets, the interface was not releasing the old records.
- Fixed an issue which prevented the use of fractional dates in analytics reports.
- Fixed a problem with audio input drivers that could generate errors in surveillance client when "Use relay server" was disabled.
- Fixed an issue in camera registration where the default port was not being loaded in the port identification text.
- Fixed a problem with the image server for mobile devices, where a new connection could retrieve old pictures.
- Fixed an issue that could cause the motion detection to stop working if the server was configured to use a second stream for motion detection while using motion detection schedule for specific times.
- Fixed a problem with the RTSP server that could cause the Digifort server to crash.
- Fixed a problem with the generation of events report that could cause the Digifort server to crash.
- Fixed an issue which prevented the use of presets in the maps.
- Fixed an issue with Samsung PTZ drivers that could make the PTZ stop working.
- Fixed a problem that could cause slowdowns in video exporting through surveillance client.
- Fixed an internal timer management problem in the server. In rare cases, this problem could cause the system fails.
- Fixed a problem with the video driver of H.263 cameras from Vivotek and D-Link which precluded its use.
- Fixed a rare server crash issue that could arise from multiple user connections.
- When playing back videos from the list of LPR records (In real time), surrounding cameras will now also be displayed.
- Fixed an issue in the ONVIF PTZ driver that could cause the server to crash in case of a camera disconnection.
- Fixed an issue in the ONVIF PTZ driver where the STOP command was not being sent to some camera models.
- Fixed a problem with the ONVIF video driver which precluded its use with video servers or cameras with

multiple lenses

3.2 Version 6.7.0.0

Release date: 04/25/2013

3.2.1 New features

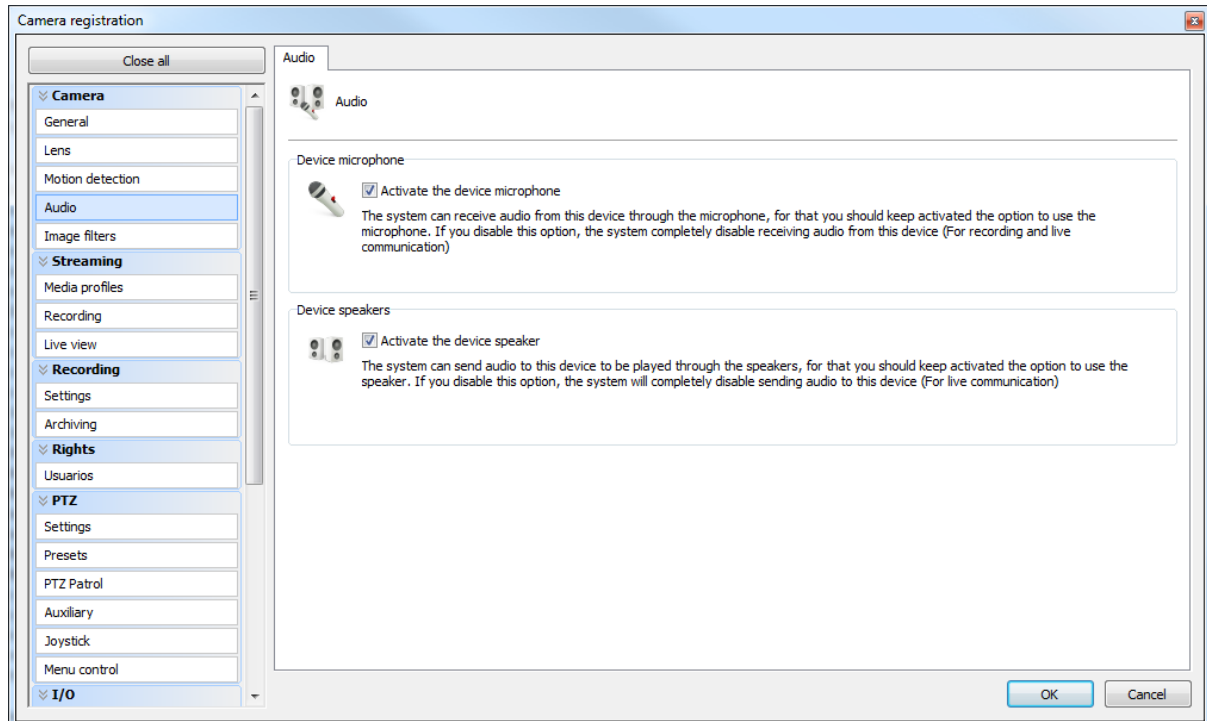
This section contains information about the new features of the system.

3.2.1.1 Audio

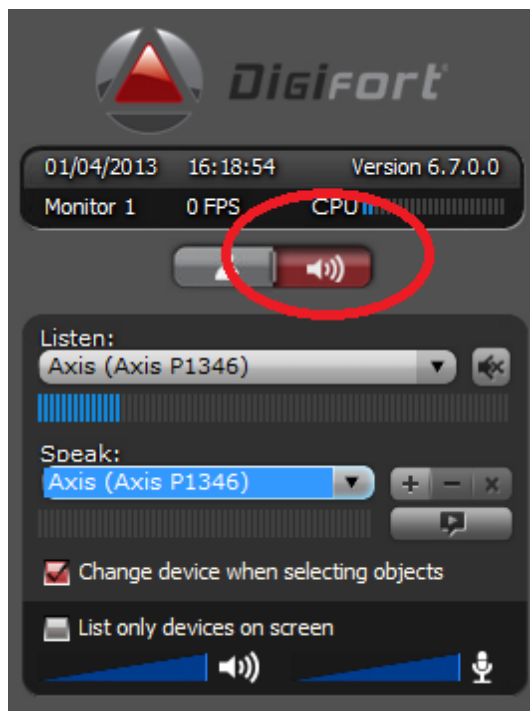
Added full support for audio, supporting recording of synchronized audio and video, two way live audio communication and sectorial audio.

Supported audio formats: PCM, G.711, G.726 e AAC

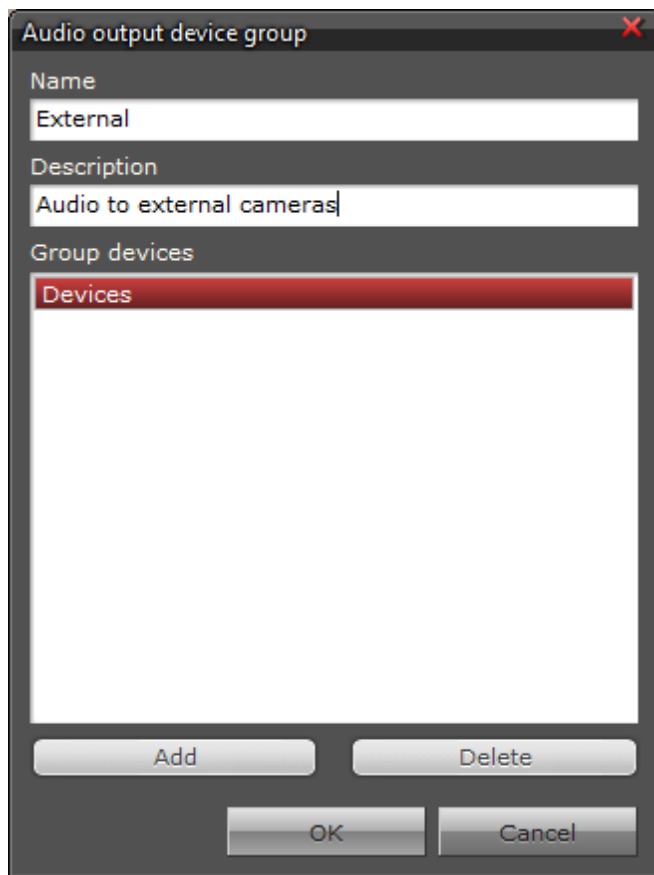
On the camera registration screen, the user can enable or disable the audio input and output for each camera



On surveillance client, a new control was created to listen to audio from the cameras and send audio:



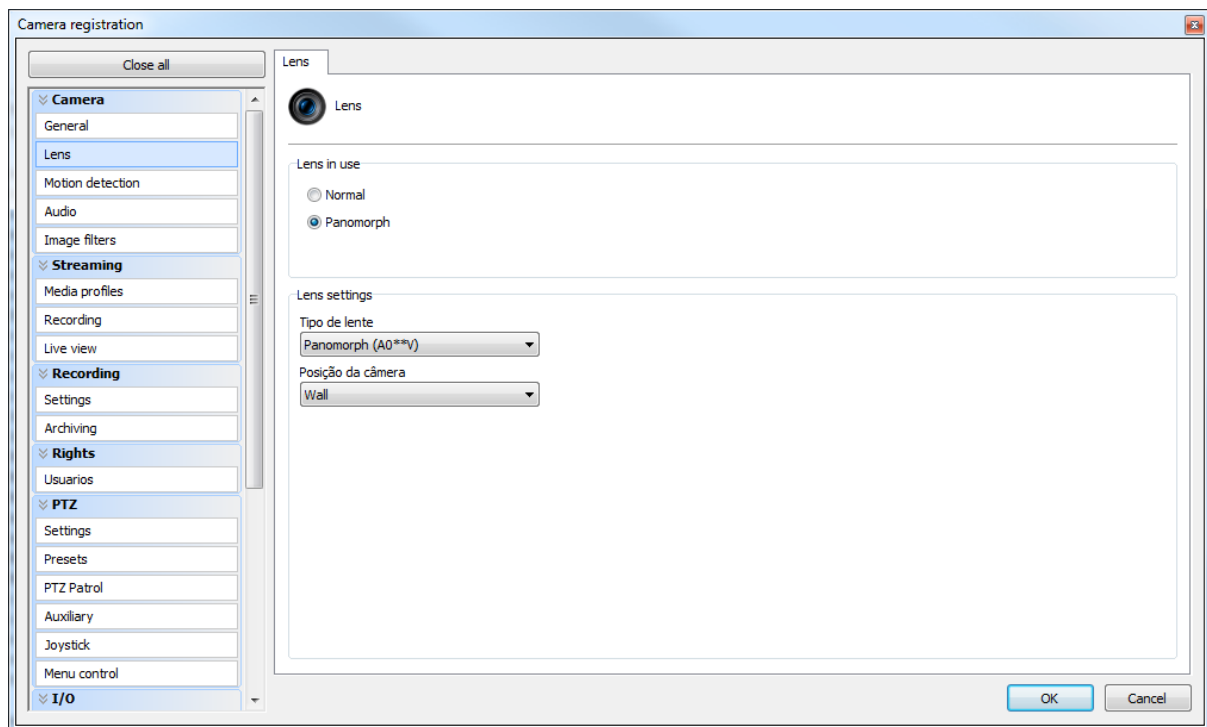
The system allows the creation of groups of audio output devices, this way, the operator can send audio to many cameras simultaneously:



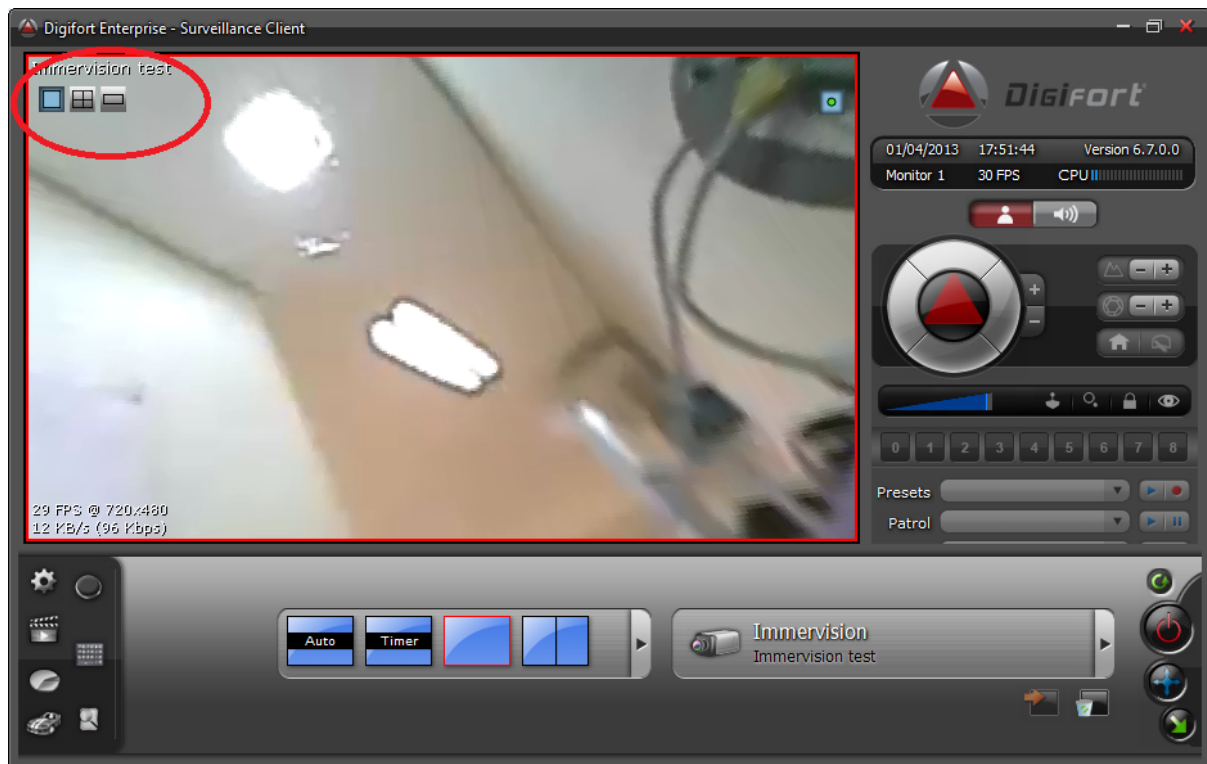
3.2.1.2 360 lens support

The system now have complete support for 360 degree panomorph lenses

On camera configuration screen, the administrator can set the type of lens used on the camera:



The system will perform the software dewarping on camera image, on live images, providing some controls such as quad visualization, area visualization, panorama and virtual PTZ



The same image dewarping controls found in live images can also be used for recorded footage and the exported videos in native format will also have dewarping controls.



3.2.1.3 RTSP Media server

The system now has an integrated RTSP media server. The RTSP Media server can be used to provide media to any media player that supports RTSP protocol (Such as VLC), and can also be used to send media to broadcast servers like Wowza and can also be used by third party systems for easy integration with Digifort.

Supported video formats: H.264, MPEG-4 e Motion JPEG
Supported audio formats: PCM, G.711, G.726 e AAC

The RTSP server supports sending media over TCP and UDP.

3.2.1.4 Database maintenance

A new software for database maintenance was created. With this new software, the administrator will be able to:

- Create a backup from the database
- Restore a database backup
- Repair a corrupted database file



3.2.1.5 Attach camera image on events

The system now allows attaching image from any camera to e-mail alerts, upon the occurrence of any event.

Alarm Actions (Configure E-Mail)

E-Mail

Configure Sending of E-Mail

Alert Group:
[Dropdown]

Message:
[Text Area]

☒ Include camera image

Camera
[List Box]

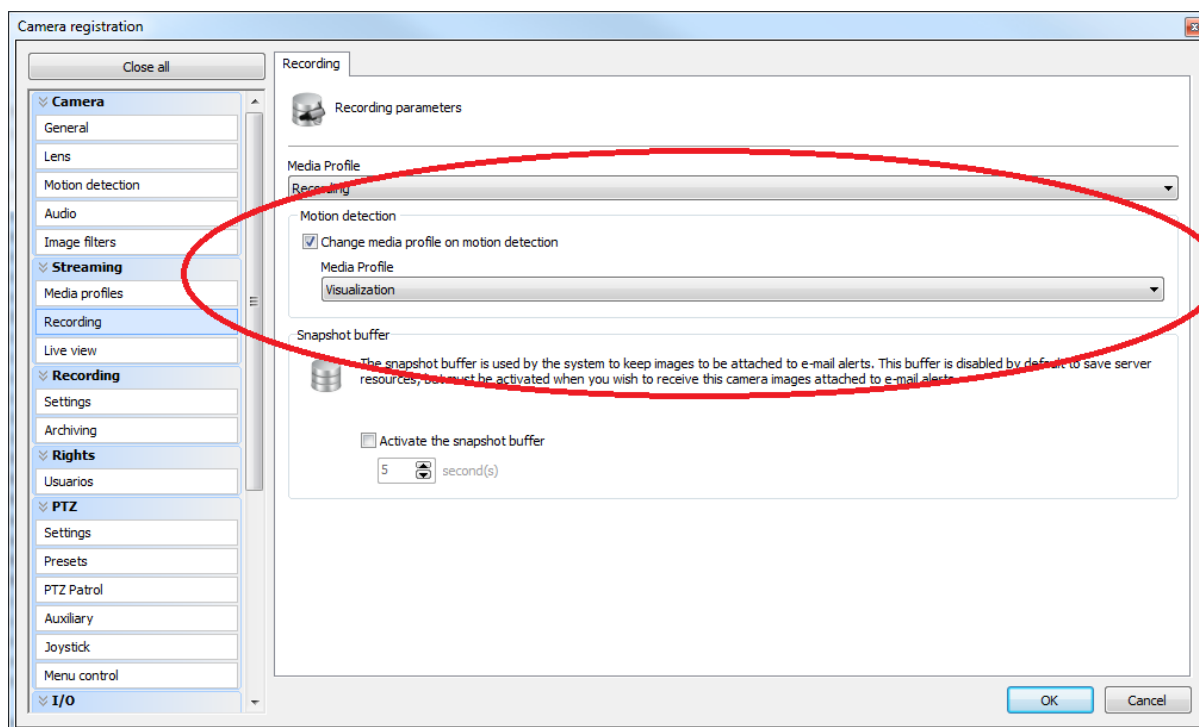
Add Delete

SMS:
☒ Use the default SMS message
☐ Use the personalized SMS message

OK Cancel

3.2.1.6 Change recording media profile on motion

Due to the new substreaming system, created to support audio, the system will now allow the automatic change of the recording media profile upon motion detection, meaning you can setup a camera to record at low resolution and low frame rate and upon a motion detection, the system will automatically switch the recording media profile to a higher resolution stream with higher frame rate.



3.2.1.7 PTZ Log

The system will not keep records of PTZ usage and blockage on audit.

On surveillance client, the operators will also be able to know, in real time, if any other operator is using the camera PTZ, by way of an icon on PTZ control:



By pointing the mouse button over the icon, the operator will have details of who is using the camera PTZ:

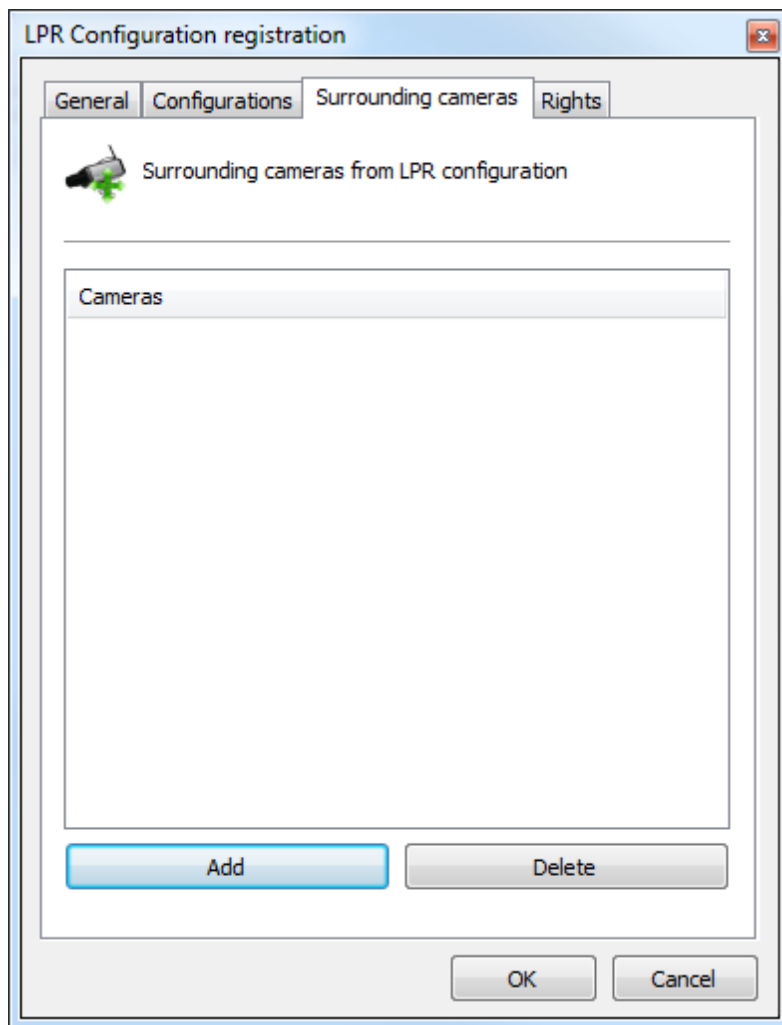


3.2.1.8 LPR

This session contains the description of the new features for LPR.

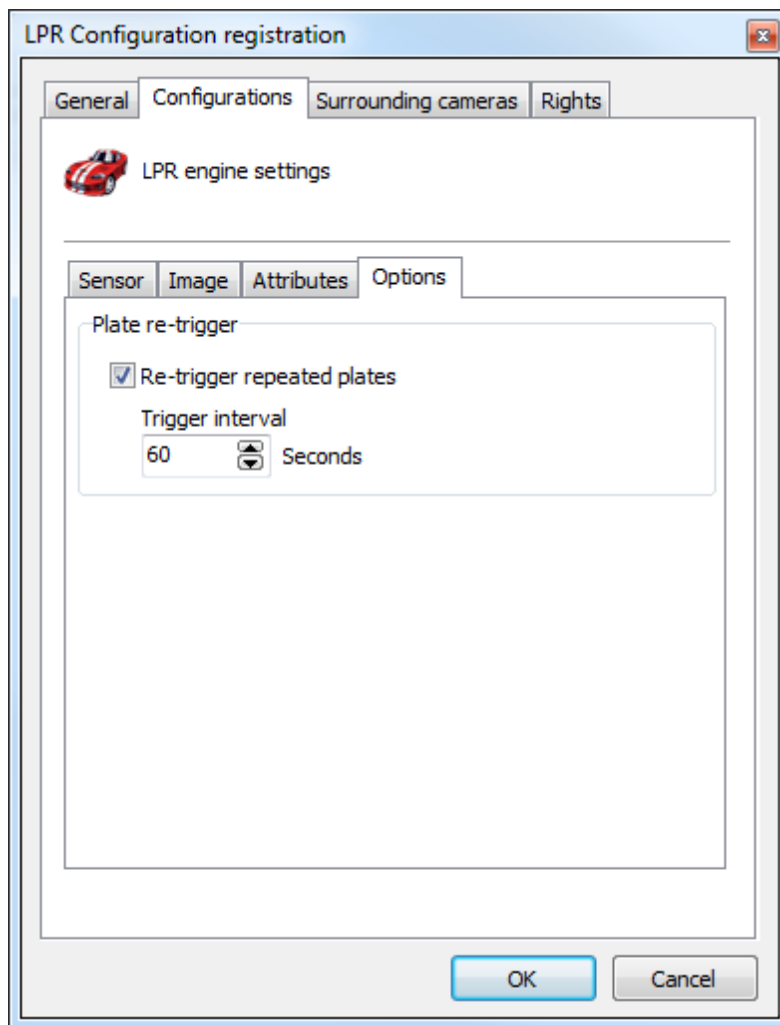
3.2.1.8.1 Surrounding cameras on LPR

On LPR configurations, it is now possible to add surrounding cameras. With this, the user will be able to have reports with the images of surrounding cameras along with the image of main LPR camera.



3.2.1.8.2 Re-trigger repeated license plates

Using the LPR engine "Carmen", a new option to allow the same license plate to be recognized again (In case no other license plate was recognized in between) was added.

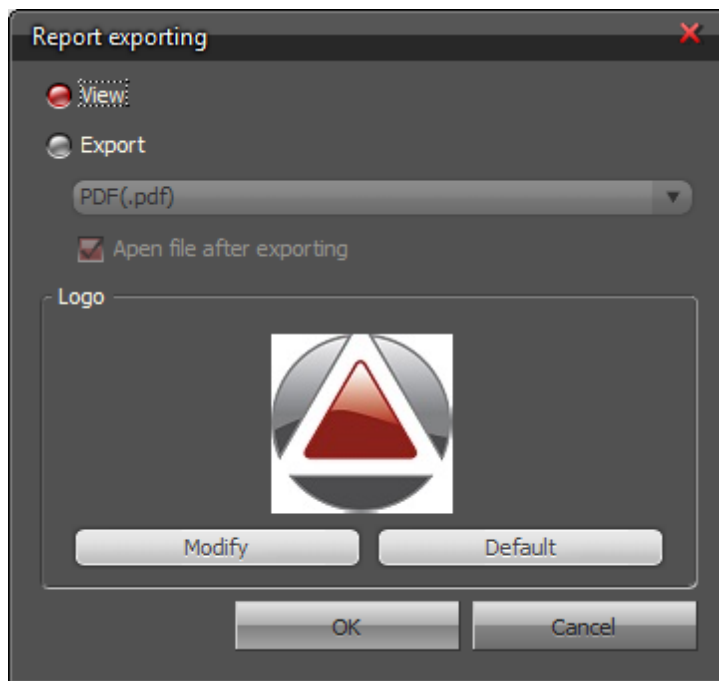


3.2.1.9 Reports

All system reports were improved with a new reporting engine, allowing new options and a better look.

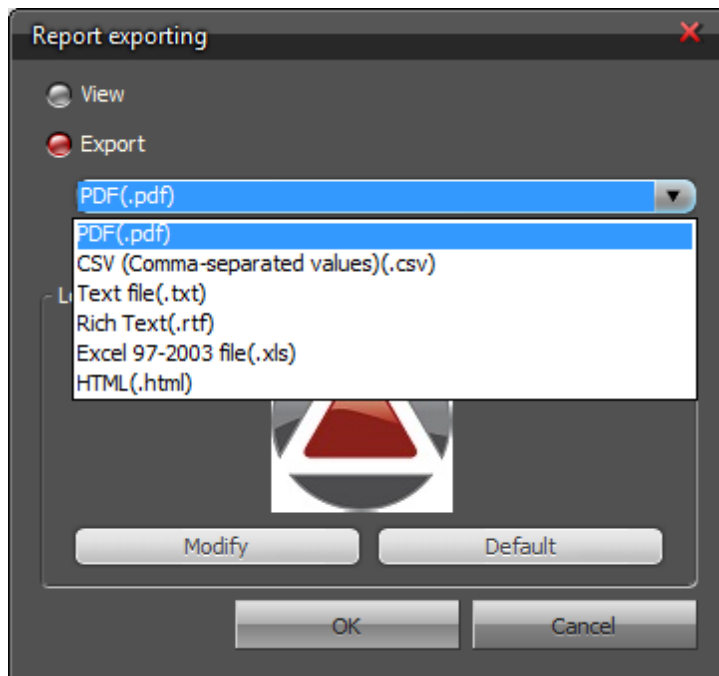
3.2.1.9.1 Change report logo

The system will now allow the operator of surveillance client to change the logo from the reports.



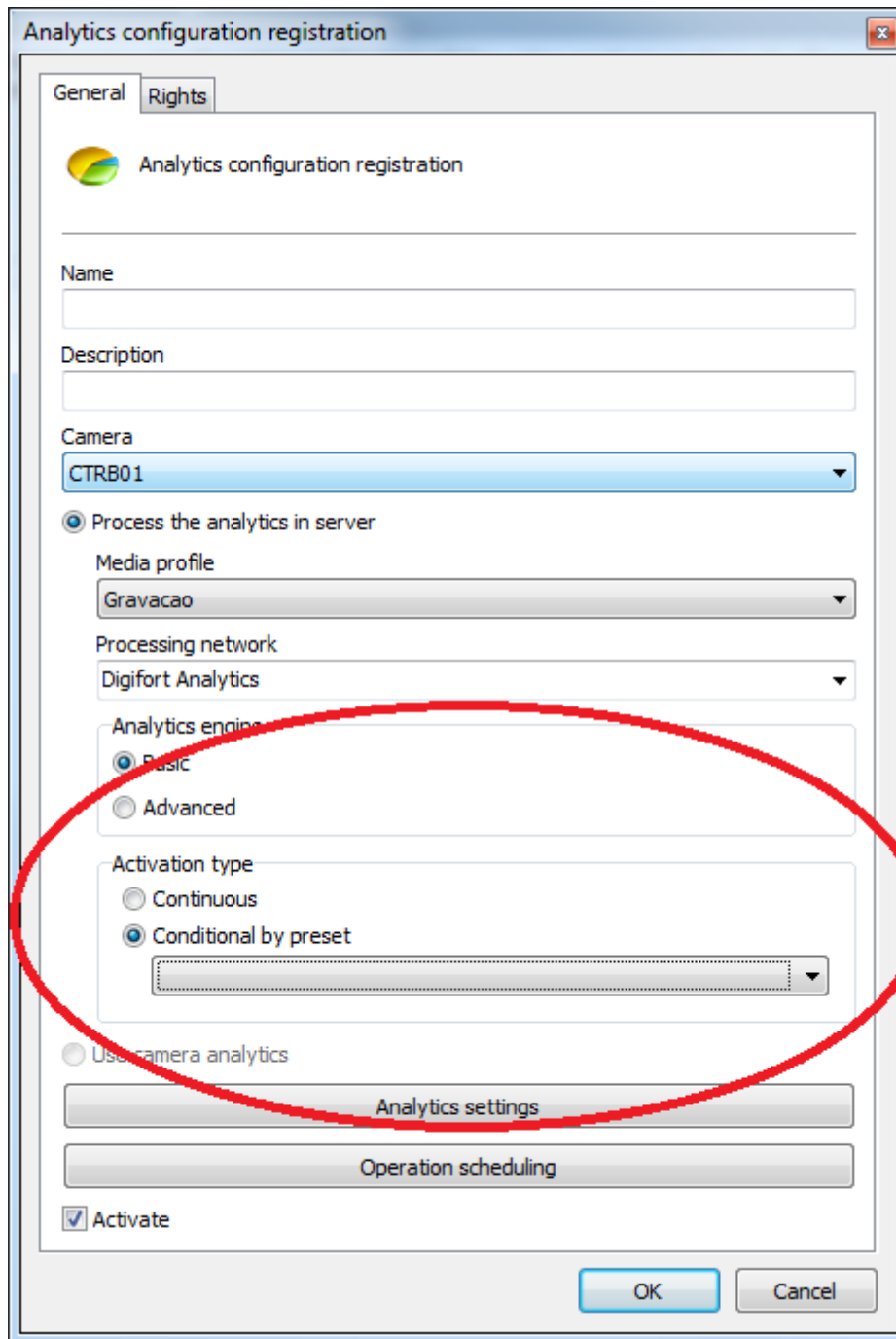
3.2.1.9.2 Exporting in different formats

With the new reporting engine, the system will now allow the exporting of the report to different formats such as PDF, CSV, TXT, RTF, XLS and HTML.



3.2.1.10 Activate analytics by presets

The system now allows the activation of an analytics configuration conditionally by preset. This way, you can define a preset to activate the configuration and it will only work when the camera is positioned on the configured preset.



The image shows a Windows-style dialog box titled "Analytics configuration registration". It has two tabs: "General" (selected) and "Rights". The "General" tab contains the following fields and options:

- A logo icon and the text "Analytics configuration registration".
- A "Name" text input field.
- A "Description" text input field.
- A "Camera" dropdown menu with "CTRB01" selected.
- A radio button labeled "Process the analytics in server" which is selected.
- A "Media profile" dropdown menu with "Gravacao" selected.
- A "Processing network" dropdown menu with "Digifort Analytics" selected.
- An "Analytics engine" section with two radio buttons: "Basic" (selected) and "Advanced".
- An "Activation type" section with two radio buttons: "Continuous" and "Conditional by preset" (selected). Below this is a dropdown menu.
- A radio button labeled "Use camera analytics" which is unselected.
- Two buttons: "Analytics settings" and "Operation scheduling".
- A checkbox labeled "Activate" which is checked.

A red oval is drawn around the "Analytics engine" and "Activation type" sections. At the bottom right are "OK" and "Cancel" buttons.

3.2.1.11 Video playback

New features for video playback and exporting.

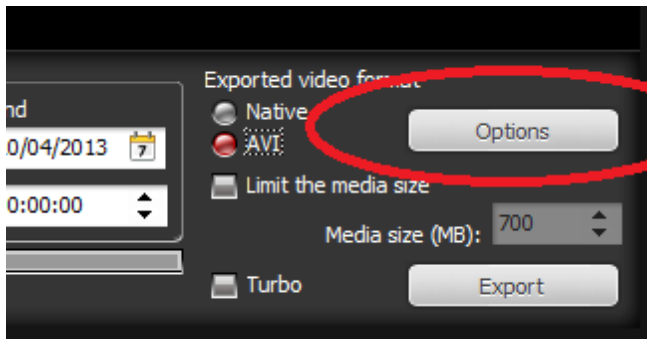
3.2.1.11.1 Jump time in playback

The media player now allows the media to jump X minutes forward or backwards, easing the analysis of recorded footage



3.2.1.11.2 Resizing exported video

On AVI exporting, the used codecs usually do not support all video resolutions supported by Digifort, due to that, a new option to allow the resizing of the video before exporting was added, ensuring better compatibility with codecs.



3.2.1.12 Individual PTZ control rights

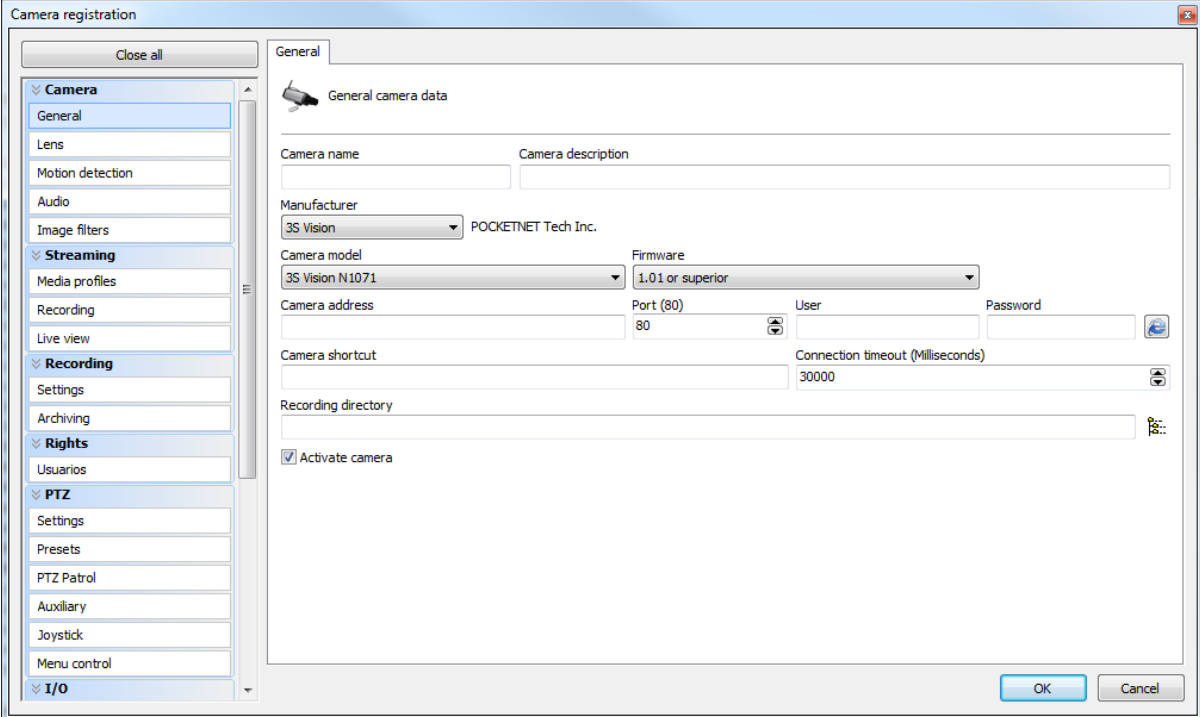
The system now allows the operator to configure rights for PTZ control individually per user and user group. This way, each camera will have a different set of PTZ rights for different users.

3.2.2 Improvements

This section explains the improvements made to existing features

3.2.2.1 New camera registration screen

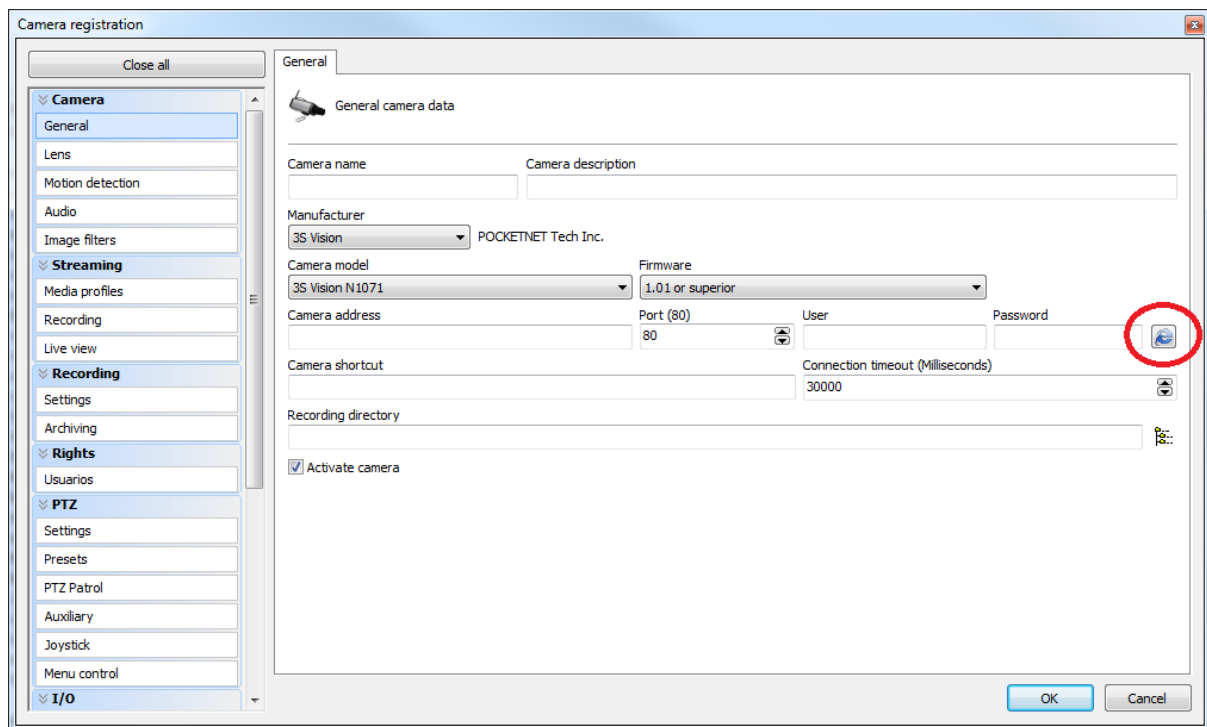
A new camera registration screen was created, with a new clean, intuitive and organized design



The screenshot shows a 'Camera registration' dialog box with a 'General' tab. On the left is a tree view with categories: Camera (General, Lens, Motion detection, Audio, Image filters), Streaming (Media profiles, Recording, Live view), Recording (Settings, Archiving), Rights (Usuarios), PTZ (Settings, Presets, PTZ Patrol, Auxiliary, Joystick, Menu control), and I/O. The main area is titled 'General camera data' and contains the following fields: 'Camera name' and 'Camera description' (text boxes); 'Manufacturer' (dropdown menu showing '3S Vision' and 'POCKETNET Tech Inc.'); 'Camera model' (dropdown menu showing '3S Vision N1071'); 'Firmware' (dropdown menu showing '1.01 or superior'); 'Camera address' (text box); 'Port (80)' (text box with '80'); 'User' (text box); 'Password' (text box with a show/hide icon); 'Camera shortcut' (text box); 'Connection timeout (Milliseconds)' (text box with '30000' and a show/hide icon); 'Recording directory' (text box with a file explorer icon); and a checked 'Activate camera' checkbox. At the bottom right are 'OK' and 'Cancel' buttons.

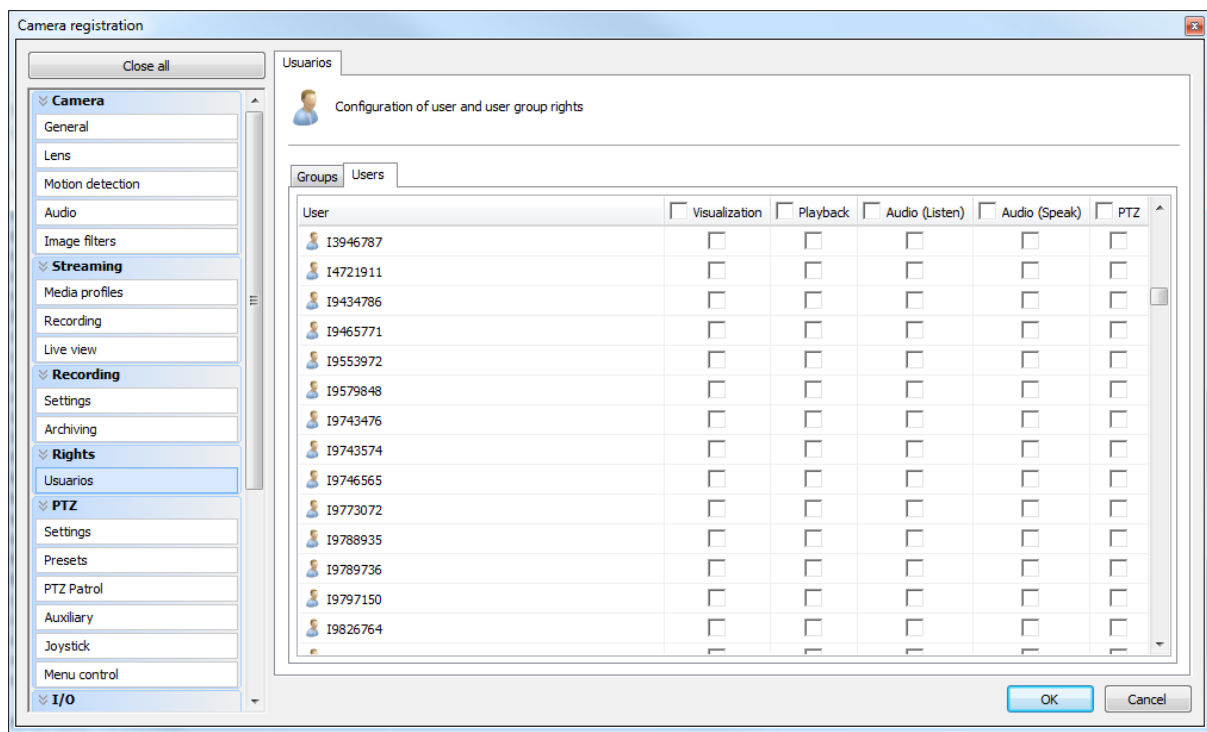
3.2.2.2 Button to open camera browser

On camera registration screen, a new button to open the webbrowser with the camera address was added:



3.2.2.3 User rights on cameras

A new way of managing user rights to cameras was created, in order to unify all rights on a simple and easy to understand interface:

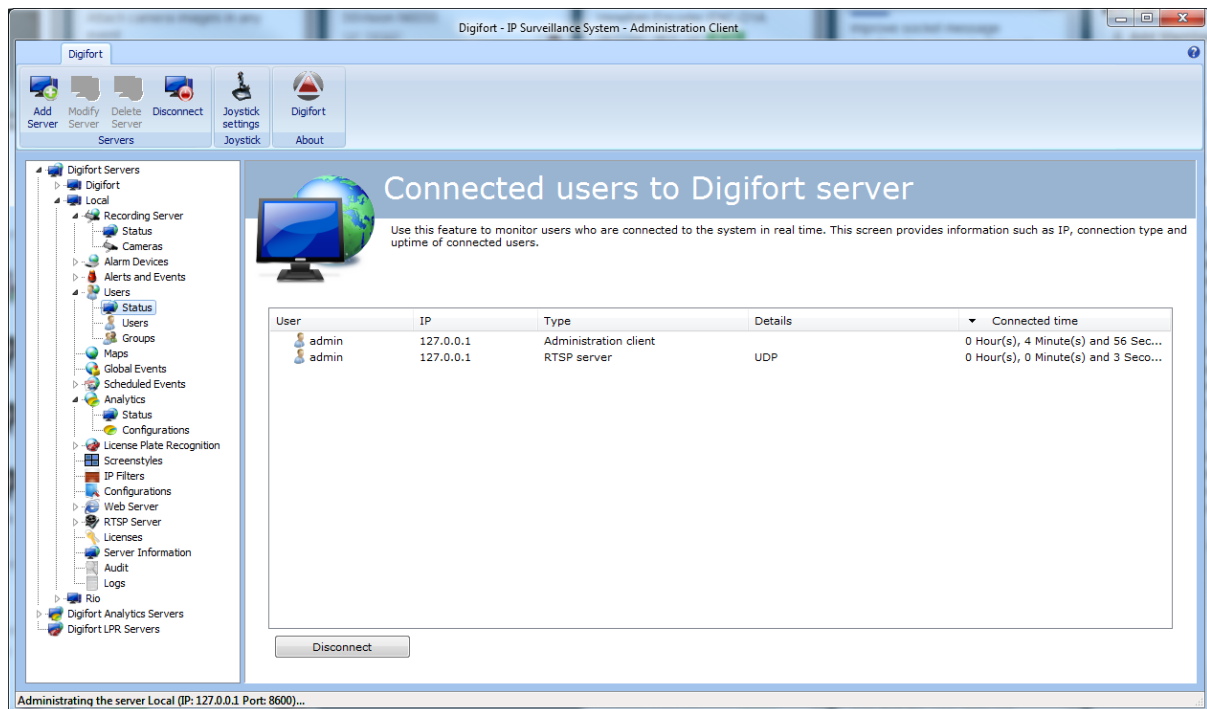


3.2.2.4 Connection unification

A new connection architecture was created to unify the user connections with the various system servers (Access, RTSP, HTTP API and Web Server).

3.2.2.4.1 User connection status

With the new connection system, a new feature that allows the administrator to view in a single screen, the connection from all users from all internal system modules was added:



3.2.2.4.2 Automatic user disconnection

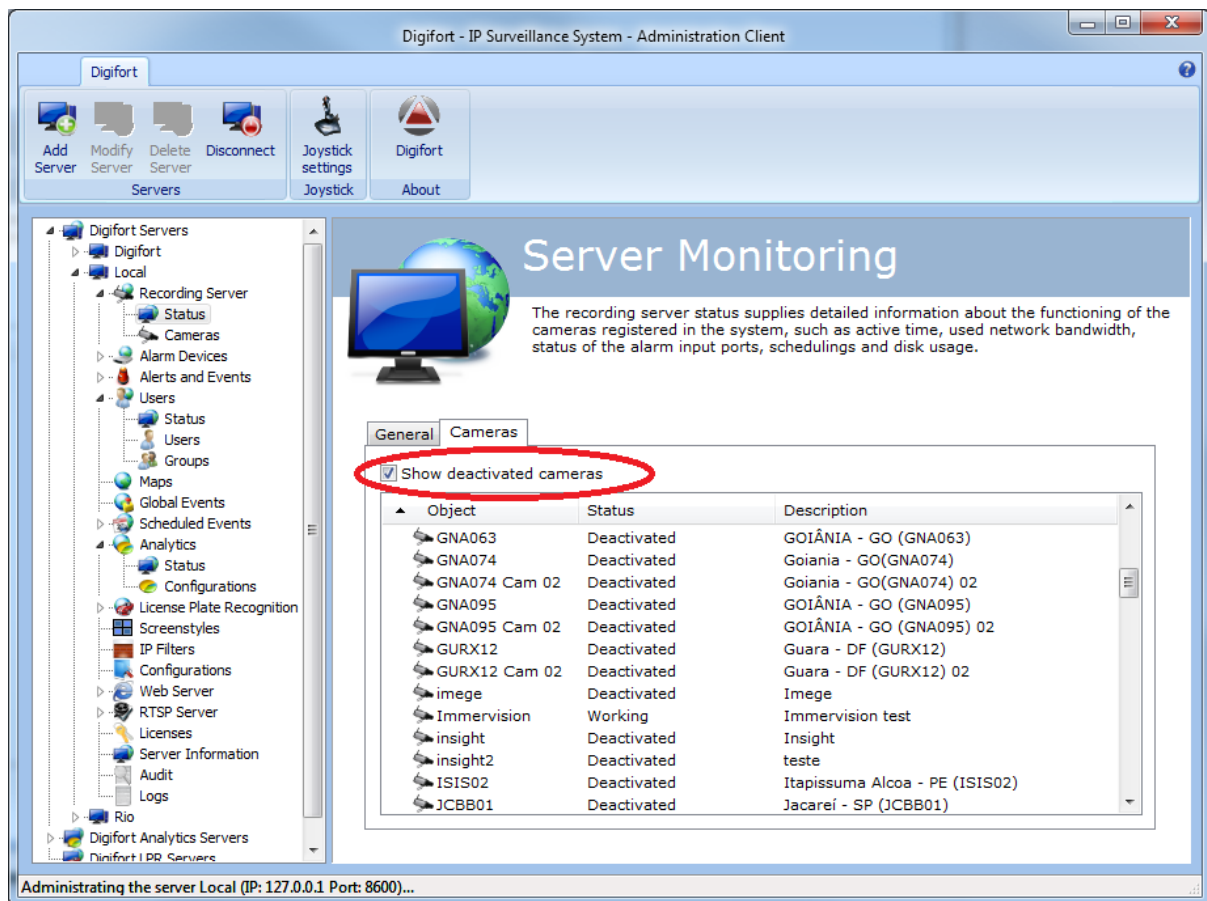
The system will now automatically disconnect connections that become invalid due to restrictions such as login time, IP or account blockage. Thus, if a user has any login restriction, it will be automatically disconnected when this condition is met. Example: The user "operator" is set to not be able to log into the system after 18:00, so if the operator connects at 17:50 he can stay logged in for 10 minutes because he will be automatically disconnected at 18:00

3.2.2.5 Player copying message

In video exporting in native format after export, the system copies the files from the player, but in previous versions it was not informing the user about this copy and this could give the impression that the export was already completed. Now when copying files from the player, the system will display an informational message to the operator.

3.2.2.6 Deactivated cameras on status

In camera status screen, on administration client, the system will now allow displaying deactivated cameras:



3.2.2.7 Video playback

Improvements of playback and video exporting

3.2.2.7.1 Performance improvement

The performance of video playback was drastically improved to support synchronization between audio and video. Thus, the speed of video playback is much better compared to previous versions.

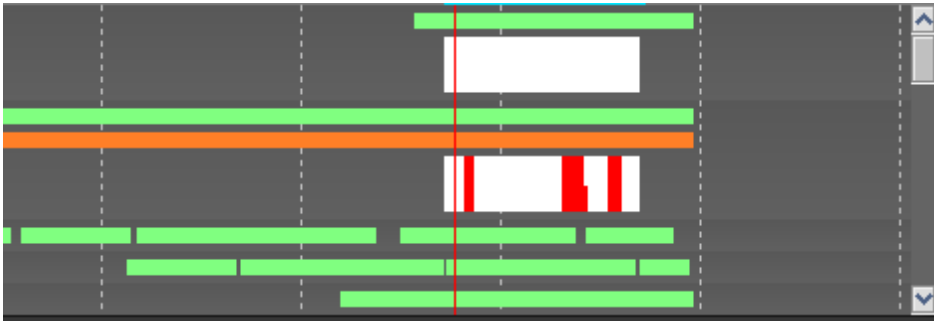
The performance of video export has also been improved, and it has been added a new "Turbo" export option, to further accelerate the process.

3.2.2.7.2 Time selection

On date selection for playback, when selecting the initial date, the system will automatically set the final date, speeding up the process of time selection.

3.2.2.7.3 Timeline improvements

The media player timeline has been enhanced to remove the unnecessary spaces if no motion detection information is present, thereby the timeline control is more compact, providing only the relevant information to the current time.



3.2.2.8 System resources

The internal system architecture has been enhanced to use less operating system resources, ensuring higher performance and greater number of cameras per server.

3.2.2.9 TCP Communication

Improved the architecture of TCP / IP communication with multi-thread. Now the processing of TCP / IP communication with the cameras will be multi-threaded, removing processing bottlenecks of systems with high data traffic.

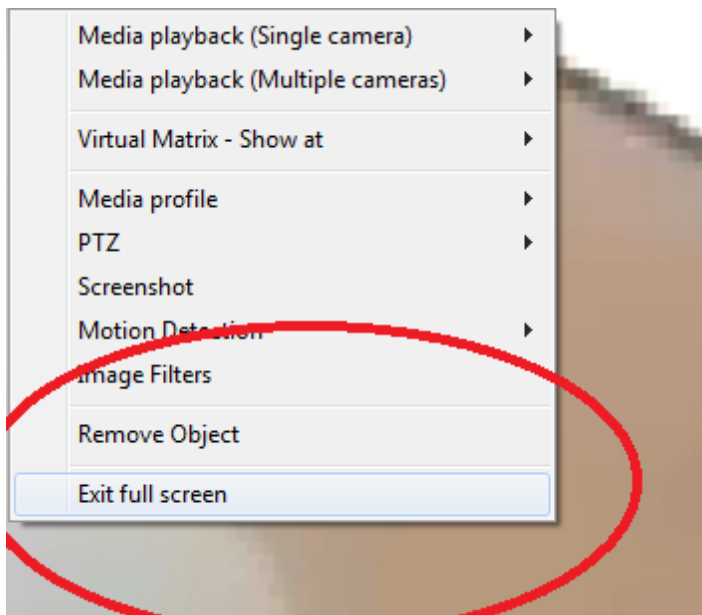
3.2.2.10 Date and time on operator answers to events

Added date and time in the responses of operators from events generated by the system. In the event query in surveillance client, now appears the date and time of when the operators responded to the event, allowing the administrator to measure the time spent by the operator to check the event.

3.2.2.11 Exit from full screen with mouse

Added a new option to exit from full screen with the mouse. Previous versions only allowed to exit the full screen by pressing the ESC key, but on systems without a keyboard this could cause problems.

To exit full screen, the user now just have to right click and select "Exit full screen"



3.2.2.12 Database backup

The performance of database backup was improved, finishing the backup task faster and avoiding database file corruptions due to a long backup process.

3.2.3 New supported devices

3.2.3.1 Media devices

3S Vision N5013
3S Vision N6013
3S Vision N6033
AirCam CU-720PIR
AirCam CW-720
AirCam OD-2050HD
AirCam OD-2060HD
AirCam POE-5010HD
Alpha-Digi ADIP-257
Alpha-Digi ADIP-301
Alpha-Digi ADIP-328
Alpha-Digi ADIP-357
Alpha-Digi ADIP-359
Alpha-Digi ADIP-459
Alpha-Digi ADIP-565
Alpha-Digi ADIP-IVS-80X
Alpha-Digi ADIP-IVS-801
Alpha-Digi ADIP IVS-812
Alpha-Digi SD820-20
Appro LC-7513
Appro LC-7516
Appro VS-2401
Arecont AV10115
Arecont AV115
Arecont AV20365
Arecont AV2255AM
Arecont AV5125IR
Arecont AV8180
ARH ParkIT
AVer SF2012H-B
Avigilon 1.0W-H3-DP20
Avigilon ENC-4P-H264
AVTech AVM 328B
AVTech AVM 357A
AVTech ADIP IVS80X
AVTech AVN812
AVTech AVI217Z
AVTech AVM301
AVTech AVM359
AVTech AVM459
AVTech AVM565
AVTech AVN257ZN
AVTech AVN801

Axis M1013
Axis M1014
Axis M1033-W
Axis M1034-W
Axis M1143-L
Axis M1144-L
Axis M3004-V
Axis M3005-V
Axis M3006-V
Axis M3007-P
Axis M3007-PV
Axis P1353
Axis P1354
Axis P1353-E
Axis P1354-E
Axis P3353
Axis P3354
Axis P3363-V
Axis P3363-VE
Axis P3364-V
Axis P3364-LV
Axis P3364-LV-E
Axis P3364-VE
Axis P3384-V
Axis P3384-VE
Axis P5544
Axis Q1604
Axis Q1604E
Axis Q1922-E
Axis Q6032-C
Axis Q6034-C
Axis Q6035C
Basler BIP2-1000C
Basler BIP2-1000C-DN
Basler BIP2-1280C
Basler BIP2-1280C-DN
Basler BIP2-1300C
Basler BIP2-1300C-DN
Basler BIP2-1600-25C
Basler BIP2-1600-25C-DN
Basler BIP2-1600C
Basler BIP2-1600C-DN
Basler BIP2-1920C
Basler BIP2-1920C-DN
Basler BIP2-2500C
Basler BIP2-2500C-DN
Basler BIP2-640C
Basler BIP2-640C-DN
BiKal BKE-KIP-TIR2000H
Bosch Dinion NBN-921-2P
Bosch Dinion NER-L2R1-1
Bosch Dinion NER-L2R1-2
Bosch Dinion NER-L2R2-1

Bosch Dinion NER-L2R2-2
Bosch Dinion NER-L2R3-1
Bosch Dinion NER-L2R3-2
Bosch Dinion NER-L2R4-1
Bosch Dinion NER-L2R4-2
Bosch Dinion NER-L2R5-1
Bosch Dinion NER-L2R5-2
Bosch KBE498V7520N
Bosch NBC-225-P
Bosch NTC-265-PI
Bosch NTC-255-PI
Brickcom CB-300Ap
Brickcom CB-302Ap
Brickcom CB-300Ap
Brickcom FD-202Ap
Brickcom FD-302Ap
Brickcom MB-300Ap
Brickcom MD-300AP
Brickcom MD-300Np
Brickcom OB-200Af
Brickcom OB-300Ap
Brickcom OB-302Ap
Brickcom OB-300Np
Brickcom OB-302Np
Brickcom OB-302Np
Brickcom GOB-300Ap
Brickcom GOB-302Ap
Brickcom GOB-300Np
Brickcom GOB-302Np
Brickcom VD-302Ap
Brickcom VD-300Np
Brickcom VD-302Np
Brickcom WCB-300Ap
Brickcom WCB-302Ap
Brickcom WMB-300Ap
Brickcom WOB-300Ap
Brickcom WOB-302Ap
Brickcom WOB-300Np
Brickcom WOB-302Np
Bycon BSA-H1600
Certis NDF-3100FH IP
Certis NDF-3300RFH IP
Certis NDV-4100HD IP
Clear CLMP2
Clear CLMP5
Cohu 3920SD
Comtex ION E100
Comtex ION E400
Compro CS400
Compro IP400
Compro IP550
Compro IP90
Compro NC1200

Compro NC2200
Compro NC3230
Compro NC4230
Compro TN50
CWBcam C1030
CWBcam GE-100-CB
Dahua SD-6582A-HN
Dahua SD-6582AN-HN
D-Link DCS-930L
D-Link DCS-2103
D-Link DCS-2130
D-Link DCS-2210
D-Link DCS-5222L
D-Link DCS-6113
D-Link DCS-6113V
D-Link DCS-6815
D-Link DCS-6817
D-Link DCS-942L
DMZ 9800N
DMZ 9801B
DMZ 9801N
DMZ 9802B
DMZ 9802C
DMZ 9803C
DMZ 9803C-MPC-WDRD
DMZ 9803D-MPC
DMZ 9803H-MPS-IR8
DMZ 9803L-IR
DMZ 9803-MPC-TH
DMZ 9803-MPS
DMZ IPDN18FH
DMZ IPDN20FH
Dotix IB2-M136/N
Dotix ID3-M136/N
Dotix SD-6580HN/H
Dotix SD6623 HN/N
Dotix SD6630 HN/N
Dotix SD6636 HN/N
Dynacolor DH820eA3
Dynacolor W2
Dynacolor W5
Dynacolor W6
EagleVision EEN-C54N1X
EagleVision EEND-60V2AVP
EagleVision EEN-DX60V5VP
EagleVision EEN-E5804D
EagleVision EEN-IR52N-VF515
EagleVision EEN-MH13W1X
EagleVision EEN-SESG33WV
EasyN HS-696L-B0L7
Elbex ELPCU1/3-12IR
Eneo NXC-1602M
Euresys Picolonet HD-41656

Everfocus EAN3260
Everfocus EAN3300
Flexwatch FW-117X-MX
Flexwatch FW-1173DS
Flexwatch FW-1173DSE
Flexwatch FW-1173MS
Flexwatch FW-1173MSE
Flexwatch FW-1174MC
Flexwatch FW-1174MO
Flexwatch FW-1174VC
Flexwatch FW-1175DV
Flexwatch FW-1175DS
Flexwatch FW-1175FV
Flexwatch FW-1175FX
Flexwatch FW-1175MS
Flexwatch FW-1175MV
Flexwatch FW-1176DS
Flexwatch FW-1176DV
Flexwatch FW-1176FSE
Flexwatch FW-1176FV
Flexwatch FW-1176FX
Flexwatch FW-1179FV
Flexwatch FW-1176MS
Flexwatch FW-1176MV
Flexwatch FW-1179MV
Flir PT-A3 series
Foscam FI8601W
Foscam FI8904W
Foscam FI8905W
Foscam FI8907W
Foscam FI8916W
Foscam FI8909W
Foscam FI8910W
Foscam FI9820W
GeoVision GV-SD200
Gerp BVE-2M-309
Gerp CB-2M-SL
Gerp DVI-2M-309
Gerp MDI-2M-28
Gerp SDE-2M-18X
Grandstream GXV3500
HDL HMEG-70
HDL HMEG-70DVIR
HDL HMEG-70P
HDL HMEG-70W
HDL HMEG-80PIR
HDL HMS1
Hikvision DS-2CD754FWDEI
Hikvision DS-2CD8264FWDEIS
Hikvision DS-7204HVI-ST
Hikvision DS-7208HVI-ST
Hikvision DS-7216HVI-ST
Hikvision DS-8116HFI-ST

Hikvision DS-9004HFI-ST
Hikvision DS-9008HFI-ST
Hikvision DS-9016HFI-ST
Histream HH9800N
Histream HH9801B
Histream HH9801N
Histream HH9802C
Histream HH9803C-MPC-WDRD
Histream HH9803C
Histream HH9803D-MPC
Histream HH9803H-MPS-IR8
Histream HH9803L-IR
Histream HH9803-MPC-TH
Histream HH9803-MPS
Hitron HDG-M120
Hitron HDG-T322
Hitron HDSA411
Hitron HEB-M120
Hitron HEBT320
Hitron HEV0108H
Hitron HEV2MPN1
Hitron HNS-S113J
Hunt HLC-1NBD
Hunt HLC-1WBDF
Hunt HLC-81CD
Hunt HLT-S30
iMege B3210E
Imege G3211E
Imege N3211E
Infinova V2511-N1D0
Infinova V2512-K
Infinova V6201-N0320
Infinova V6202-T0220
Intelbras VD 4D1 120M
Intelbras VD 4E 120C
Intelbras VD 8D1 240M
Intelbras VD 8E 240C
Intelbras VD 16D1 480M
Intelbras VD 16D1 480H
Intelbras VD 16E 480C
Intelbras VIP E3220
Intelbras VIP E5220
Intelbras VIP S-3120
Intelbras VIP S-4100
Intelbras VIP S-4120
Intelbras VIP SD13M 18X
iSmart DOME720PIP
iSmart Serie Is
Golbong HD251
Golbong HD311R
Golbong HD321
Golbong HD321R
Golbong HD3212R

Golbong HD511
Golbong HD611R
Golbong HD621
Golbong HD621R
Golbong HD811K
Golbong N301(F)
Golbong N9601E
Golbong NAP21XX
Golbong NAP21XXIR
Golbong NAP22
Golbong NAP416IR
Golbong GB-9616C-C
Golbong GB-9632F-S
Golbong GB-N9624K-E
JVC VN-H137U
JVC VN-H157WPU
JVC VN-H237U
JVC VN-H237VPU
JVC VN-H257U
JVC VN-H257VPU
JVC VN-H37U
JVC VN-H57U
JVC VN-H657
JVC VN-T16U
JVC VN-T216VPRU
KODO PRO KDR-04HR
KODO PRO KDR-08SR
KODO PRO KDR-16LF
Kompsos K16480L
Kompsos K4120L
Kompsos K8240L
LG LE4016
LG LNB3100
LG LNB5100
LG LND3100
LG LND5100
LG LNP2800
LG LNP2800I
LG LNP2810
LG LNP2810T
LG LNP3700T
LG LNV5100
LG LRH7080D
LG LRH7160D
LG LW9228I
LG LW9422
LS VISION LS HD Fixed
LS VISION LS HD Speed Dome
LS VISION LS SD Fixed
LS VISION LS SD Speed Dome
LuxVision LV-IP75-2M
LuxVision LV-IP5056HS
LuxVision LV-06D

LuxVision LV-6NVR
LuxVision LV-216
LuxVision LV-716E
Messoa NCC800
Messoa NCC800E
Messoa NCC800WL
Messoa NCR870E
Messoa NDF820E
Messoa NDF821E
Messoa NDF831E
Messoa NDR891E
Messoa NCB855E
Messoa NCR875E
NV-SD-IP-PXXX
Oncam GE-IP-001
Oncam GE-IPP-001
Oncam GE-IPS-001
Optiview FHDCC2M
Optiview FHDCC3M
Optiview FHDCC3MWP
Optiview HD2MPTZ20
Optiview HD2MPTZ20IR
Optiview HDB1M
Optiview HDB2MVF
Optiview HDB3MVF
Optiview HDCC1MWP
Optiview HDCC2M
Optiview HDCC5M
Optiview HDD1MA
Optiview HDD2MA
Optiview HDD3MIA
Optiview HDDCC3M
Optiview VR4LT
Optiview VR8LT
Optiview VR8LTA
Optiview VR16EM
Optiview VR16LT
OTN 2500_X3M
Panasonic BL-C210
Panasonic DG-SF438
Panasonic DG-SW458
Panasonic DG-SW458M
Panasonic WV-SF438
Panasonic WV-SW458
Panasonic WV-SW458M
Pelco ES41E36-5W
Pelco IL10-DP
PosonicGeye HCN-SP900
PosonicGeye HCN-T-RC6310
PosonicGeye HCN-T-RC6320
PosonicGeye HCN-T-RC6510
PosonicGeye HCN-T-RC6520
PosonicGeye HCN-T-RC6910

PosonicGeye HCN-T-RC6920
Pumatronix ITSCAM-403LM84
Samsung SNB-5001
Samsung SNB-6003N
Samsung SNB-6004N
Samsung SNB-7001P
Samsung SNB-7002N
Samsung SND-5010P
Samsung SND-5011
Samsung SND-5061
Samsung SND-6083N
Samsung SND-6084N
Samsung SND-7011P
Samsung SND-7061
Samsung SND-7082N
Samsung SNO-7082R
Samsung SNP-5300N
Samsung SNP-6200H
Samsung SNV-7082P
Samsung SRD-1650
Samsung SRD-1670
Shany SNC-WD2322DN
Siera IPS 8420
Siera IPS 8600
Siera IPS 8720HD
Sony SNC-ER580
Sony SNC-VB600B
Sony SNC-VM600B
Sony SNC-VM630B
Sunell SN-IPC54/12EDN
Sunell SN-IP-C54/12EDN
Sunell SN-IPC54/12DN
Sunell SN-IPC54/12FDN
Sunell SN-IPV54/12DN
Sunell SN-IPV54/12DR
Sunell SN-IPD54/12VDN
Sunell SN-IPD54/12VDR
Sunell SN-IPV54/12UDN
Sunell SN-IPV54/12UDR
Sunell SN-IPR54/12DN
Sunell SN-IPR54/12ANDN
Sunell SN-IPV54/12ZDR
Sunell SN-IPR54/12ALDN
Sunell SN-IPR54/12AKDN
Sunell SN-IPC54/14EDN
Sunell SN-IPR54/14AKDN
Sunell SN-IPR54/14APDN
Sunell SN-IPD54/14VDN
Sunell SN-IPV54/14ZDR
Sunell SN-IPV54/14UDN
Sunell SN-IPV54/14UDR
Sunell SN-IPR54/14ALDN
Sunell SN-IPC54/11DN

Sunell SN-IPC54/11EDN
Sunell SN-IPC54/11FDN
Sunell SN-IPV54/11DN
Sunell SN-IPV54/11DR
Sunell SN-IPD54/11VDN
Sunell SN-IPD54/11VDR
Sunell SN-IPV54/11UDN
Sunell SN-IPV54/11UDR
Sunell SN-IPR54/11DN
Sunell SN-IPR54/11ANDN
Sunell SN-IPV54/11ZDR
Sunell SN-IPR54/11ALDN
Sunell SN-IPR54/11AKDN
Sunell SN-IPR54/11APDN
Sunell SN-IPC54/00DN(II)
Sunell SN-IPC54/00EDN
Sunell SN-IPC54/00FDN
Sunell SN-IPV54/00DN(II)
Sunell SN-IPV54/00DR(II)
Sunell SN-IPD54/00VDN
Sunell SN-IPD54/00VDR
Sunell SN-IPV54/00UDN
Sunell SN-IPV54/00UDR
Sunell SN-IPR54/00DN
Sunell SN-IPR54/00ANDN
Sunell SN-IPV54/00ZDR
Sunell SN-IPR54/00ALDN
Sunell SN-IPR54/00AKDN
Sunell SN-IPC54/51DN
Sunell SN-IPC54/51EDN
Sunell SN-IPC54/51FDN
Sunell SN-IPV54/51DN
Sunell SN-IPV54/51DR
Sunell SN-IPD54/51VDN
Sunell SN-IPD54/51VDR
Sunell SN-IPV54/51UDN
Sunell SN-IPV54/51UDR
Sunell SN-IPR54/51DN
Sunell SN-IPR54/51ANDN
Sunell SN-IPV54/51ZDR
Sunell SN-IPR54/51ALDN
Sunell SN-IPR54/51AKDN
Sunell SN-IPC54/50DN
Sunell SN-IPC54/50EDN
Sunell SN-IPC54/50FDN
Sunell SN-IPV54/50DN
Sunell SN-IPV54/50DR
Sunell SN-IPD54/50VDN
Sunell SN-IPD54/50VDR
Sunell SN-IPV54/50UDN
Sunell SN-IPV54/50UDR
Sunell SN-IPR54/50DN
Sunell SN-IPR54/50ANDN

Sunell SN-IPV54/50ZDR
Sunell SN-IPR54/50ALDN
Sunell SN-IPR54/50AKDN
Sunell SN-IPC54/20BDN
Sunell SN-IPC54/20EDN
Sunell SN-IPC54/20FDN
Sunell SN-IPV54/20DN
Sunell SN-IPV54/20DR
Sunell SN-IPD54/20VDN
Sunell SN-IPD54/20VDR
Sunell SN-IPV54/20UDN
Sunell SN-IPV54/20UDR
Sunell SN-IPR54/20UDN
Sunell SN-IPR54/20ANDN
Sunell SN-IPV54/20ZDR
Sunell SN-IPR54/20ALDN
Sunell SN-IPR54/20AKDN
Sunell PS54/70DN/Z18
Sunell IPS54/70DN/ZR18
Sunell IPS54/70DR/Z18
Sunell PS54/70DR/ZR18
Sunell IPS54/80DN/ZN20
Sunell IPS54/80DR/ZN20
Sunell IPS54/60DN/Z18
Sunell IPS54/60DN/Z28
Sunell IPS54/60DN/Z36
Sunell IPS54/60DN/ZS22
Sunell IPS54/60DN/ZS36
Sunell IPS54/60DR/Z18
Sunell IPS54/60DR/Z28
Sunell IPS54/60DR/Z36
Sunell IPS54/60DR/ZS22
Sunell IPS54/60DR/ZS36
Sunell SN-IPC54/40EDN-5MP
Sunell SN-IPR54/40AKDN-5MP
Sunell SN-IPR54/40APDN-5MP
Sunell SN-IPD54/40VDN-5MP
Sunell SN-IPV54/40UDN-5MP
Sunell SN-IPV54/40UDR-5MP
Sunell SN-IPC54/40EDN-3MP
Sunell SN-IPR54/40AKDN-3MP
Sunell SN-IPR54/40APDN-3MP
Sunell SN-IPD54/40VDN-3MP
Sunell SN-IPV54/40UDN-3MP
Sunell SN-IPV54/40UDR-3MP
Sunell VSR5401
Surveon CAM1300
Surveon CAM1301
Surveon CAM1320
Surveon CAM2101
Surveon CAM2300
Surveon CAM2301A
Surveon CAM2311

Surveon CAM2311P
Surveon CAM2321
Surveon CAM2400
Surveon CAM3351
Surveon CAM3361
Surveon CAM3365
Surveon CAM3371
Surveon CAM4110
Surveon CAM4160
Surveon CAM4310
Surveon CAM4311
Surveon CAM4321
Surveon CAM4360
Surveon CAM4361
Surveon CAM4365
Surveon CAM4371
Surveon CAM6180
Surveon CAM6181
Tecvoz HLC-84BV
Teki TK-2M342
Teki TK-2M410/20
Teki TK-2M430/20
Teki TK-2M440/20
Teki TK-2M722
Teki TK-2M837
Thor Security TH-EC3016
Tiandy NC9100S3-3MP-IR30
Topview A300DIZ-DN-HPD-09
UDP NVC110
UDP NVC1000HD
UDP IPN100HD
UDP IPN1202HD
UDP IPN2102HD
UDP IPN3102HD
UDP IPN6602HD
UDP IPX3302HD
UDP IPX3702HD
UDP ITC1100
Venetian ENC-D1A
Venetian IP-7515
Venetian Mini-2MEGA
Venetian SEP-IP-36550
VISIONxIP BU-1330P-5-60-30M
VISIONxIP MD-1330P-B3
VISIONxIP VS-1001
Vivotek CC8130
Vivotek FD8131
Vivotek IP8361
Vivotek PT8133
VTV IPNV02
XTS BU2MPDNVF
XTS NVS-21
XTS SD20XDN2MP-WIP

XTS SD36XDNP-WIP
Yoko RYK-IP3802
Yoko RYK-IP5831
ZKTeco ZKMD470

3.2.3.2 Alarm devices

Aviosys IP Power 9211 Delux
Aviosys IP Power 9212 Delux
Aviosys IP Power 9222 Delux

3.2.4 Fixes

- Fixed a problem that could cause the server to log errors in the server log containing the message that the command CMD_VIRTUAL_MATRIX_CLIENT_MONITORS has failed
- Removed real-time camera information from synoptic map. Critical information such as address of the camera, recording days and status of I/O will now be displayed only to the user admin
- Fixed an issue that could cause the server to hang while archiving was in progress
- Fixed all the mass object configuration screens (Right click, using the administration client) to load the data from the selected object
- If a user clicks on a camera of a synoptic map of which he has no rights to view, an error message will be displayed
- Fixed a problem with the video driver from Bosch that could "break" the video
- The administration client was allowing the user to create subdirectories for video recording containing blank characters at the beginning and end of the subdirectory name, which prevented the recording of images, generating errors in recording
- Fixed an issue in the media driver of Dahua and Intelbras devices that could cause the server to hang
- Fixed an issue that could cause the loss of the recordings of the cameras recorded on a remote drive (NAS) if the server went into operation before the unit
- Fixed a problem with the usage of mapped drives (NAS) where the system did not map the recordings of the cameras if the unit became online after the server had been loaded
- Automatic updating of files (Package translation) was not being completed successfully in stations with restricted rights for writing files in the installation directory of the system
- The installation of the standard edition was not including the image files of map objects
- The screen to capture of fingerprint of the user (For biometric access) was displaying a new finger (sixth right finger) erroneously
- The media will no longer open maximized when set to open on a specific monitor
- When the user minimizes surveillance client with the minimize button in the tray, the system icon in the taskbar will be removed

- Fixed a problem of the database that video recording that was preventing the recording frame rates low as 1 frame per hour or less
- Fixed a problem that could cause the surveillance client to crash on systems with many maps (Above 100 synoptic maps)
- Fixed a problem in the driver of FLIR cameras where if the camera was restarted, the system did not perform the reconnection
- Fixed a performance issue in database
- Fixed a problem with the video driver from D-Link DCS-6818
- Fixed a problem with the presets of the Zavio V111T video server
- Fixed an issue with PTZ camera LG LW9228 that did not work with the protocol Multix
- Fixed a problem with the video driver of the equipment Traficon VIPTBox which prevented the use of this device
- Fixed some issues with the ONVIF driver they prevented its use with some devices
- Fixed an issue on the surveillance client that allowed the user to open many instances of multi-monitor, causing the system to crash
- Improved communication architecture with KODO-16SR DVR
- Fixed a problem with the PTZ driver of camera FLIR PTZ35X140MS
- Fixed a problem with the PTZ driver of camera Zavio M511E
- Fixed an issue that could cause Internet Explorer to crash when used for viewing with ActiveX plugins
- Fixed a problem with the basic analytics that prevented the firing of alarm actions
- Updated integration with embedded analytics of UDP cameras
- Fixed an issue that allowed the user to drag a camera from media player (video playback) to the main screen of Digifort
- Fixed an issue in the search of event records when using a client from a higher edition (Enterprise) connected to a server from a lower edition (Standard)
- Fixed translation problems in ActiveX controls
- Fixed a small problem in the search interface of audit records that displayed the wrong number of records